

Property ref: 87528

## Skylark House, Reading, RG2 0PA

**£1,250 PCM**

**HASLAM'S**  
Lettings



A stunning one bedroom first floor apartment situated in the exclusive Kennet Island development within walking distance to Green Park and easily accessible to the M4.

Reading Borough Council Tax Band C.

Water supply: Mains

Drainage info: Mains

Electricity supply: Mains

Broadband/Mobile Info: Connections available. For an indication of specific speeds and supply of Broadband and Mobile, we advise applicants go to the Ofcom website Broadband and Mobile Coverage Checker.

- Open plan living/kitchen area; Modern appliances
- One double bedroom with en-suite; Secured underground parking
- Close links to A329 & M4; Private outside patio area facing east
- Electric Heating; EPC Rating C
- Walking distance to local amenities & bus routes
- Unfurnished; Managed by HASLAM'S

### Available 09/02/2026

\*Fees For Assured Shorthold Tenancies: when you rent a property from us you will be required to pay a sum equivalent to one weeks' rent for a holding deposit. Upon successful application, this amount will be off set against your first months' rent. You will also be required to pay a security deposit equivalent to 5 weeks' rent which will be held and protected in line with Deposit legislation. For more information about our fees please visit: [www.haslams.net](http://www.haslams.net)  
Fees for all other tenancies (Non Housing Act Tenancies / Company Lets): when you rent a property from us we will charge you a one-off fee per property. This charge is the equivalent of 15 days of the monthly rental charge (+VAT) with a minimum fee of £450 (inc.VAT) up to a maximum of £650 (inc.VAT). Other fees may apply depending on your circumstances.

**0118 960 1055**

**[lettings@haslams.net](mailto:lettings@haslams.net) [www.haslams.net](http://www.haslams.net)**

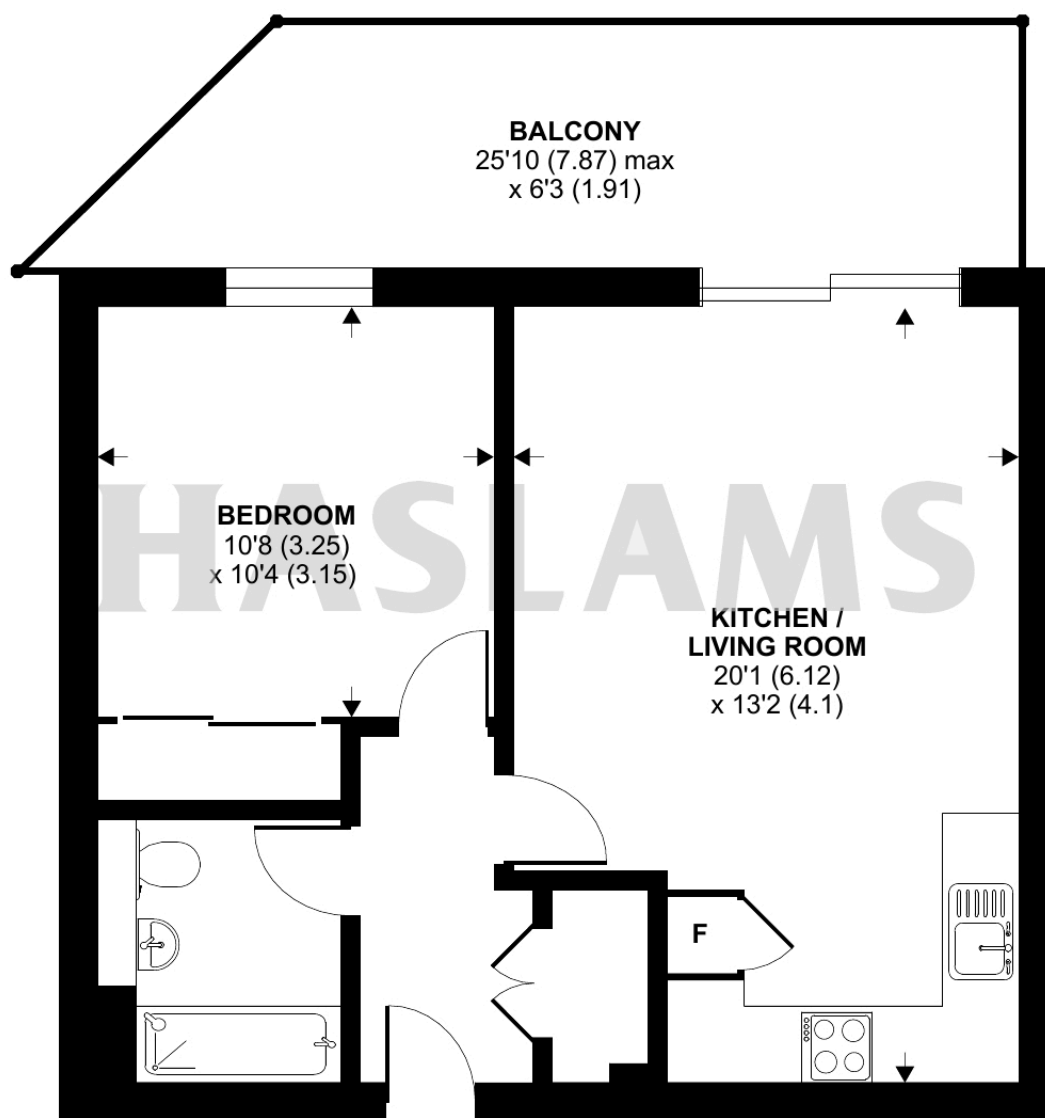
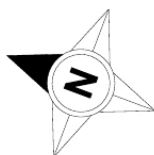
**Haslams Estate Agents Ltd, 159 Friar Street, Reading, Berkshire, RG1 1HE**



# Skylark House, Drake Way, Reading, RG2

Approximate Area = 484 sq ft / 45 sq m

For identification only - Not to scale

**FIRST FLOOR****Certified  
Property  
Measurer**

Floor plan produced in accordance with RICS Property Measurement Standards incorporating International Property Measurement Standards (IPMS2 Residential). © n1cheom 2024.  
Produced for Haslam's. REF: 1135953