

Property ref: 170407

Palmer Street, Reading, RG1 3GY

£1,825 PCM

HASLAM'S
Lettings



A modern two bedroom, two bathroom, fourth floor apartment located in Reading town centre, superbly built by Berkley Homes. The property further benefits from an open plan living/kitchen area and private balcony.

Reading Borough Council tax band D.

Water supply: Mains

Drainage info: Mains

Electricity supply: Mains

Broadband/Mobile Info: Connections available. For an indication of specific speeds and supply of Broadband and Mobile, we advise applicants go to the Ofcom website Broadband and Mobile Coverage Checker.

Available 02/02/2026

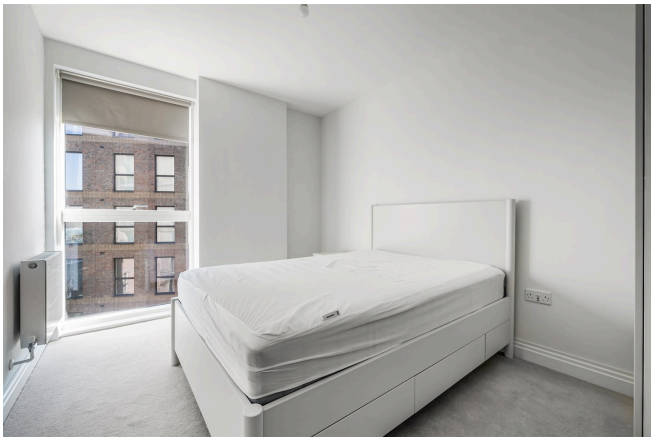
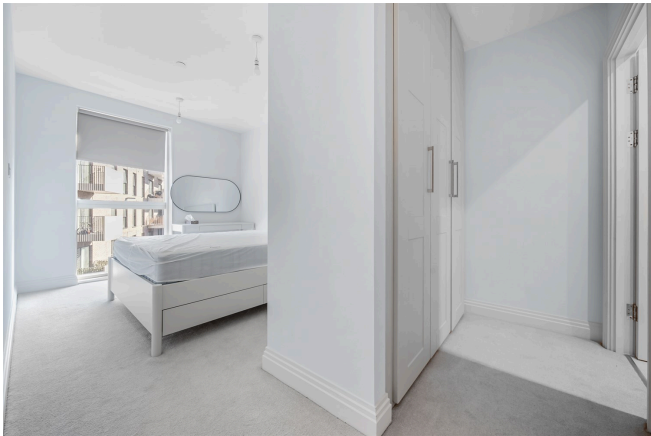
*Fees For Assured Shorthold Tenancies: when you rent a property from us you will be required to pay a sum equivalent to one weeks' rent for a holding deposit. Upon successful application, this amount will be off set against your first months' rent. You will also be required to pay a security deposit equivalent to 5 weeks' rent which will be held and protected in line with Deposit legislation. For more information about our fees please visit: www.haslams.net
Fees for all other tenancies (Non Housing Act Tenancies / Company Lets): when you rent a property from us we will charge you a one-off fee per property. This charge is the equivalent of 15 days of the monthly rental charge (+VAT) with a minimum fee of £450 (inc.VAT) up to a maximum of £650 (inc.VAT). Other fees may apply depending on your circumstances.

- A stunning two bedroom apartment
- Open plan living/kitchen area; En suite shower room and further family bathroom
- Private balcony; Fourth floor; EPC rating B
- £75 per month on top of the rent to cover the hot water and heating via a communal boiler
- Close to Reading town centre and mainline station
- Furnished; No parking; Managed by HASLAM'S

0118 960 1055

lettings@haslams.net www.haslams.net

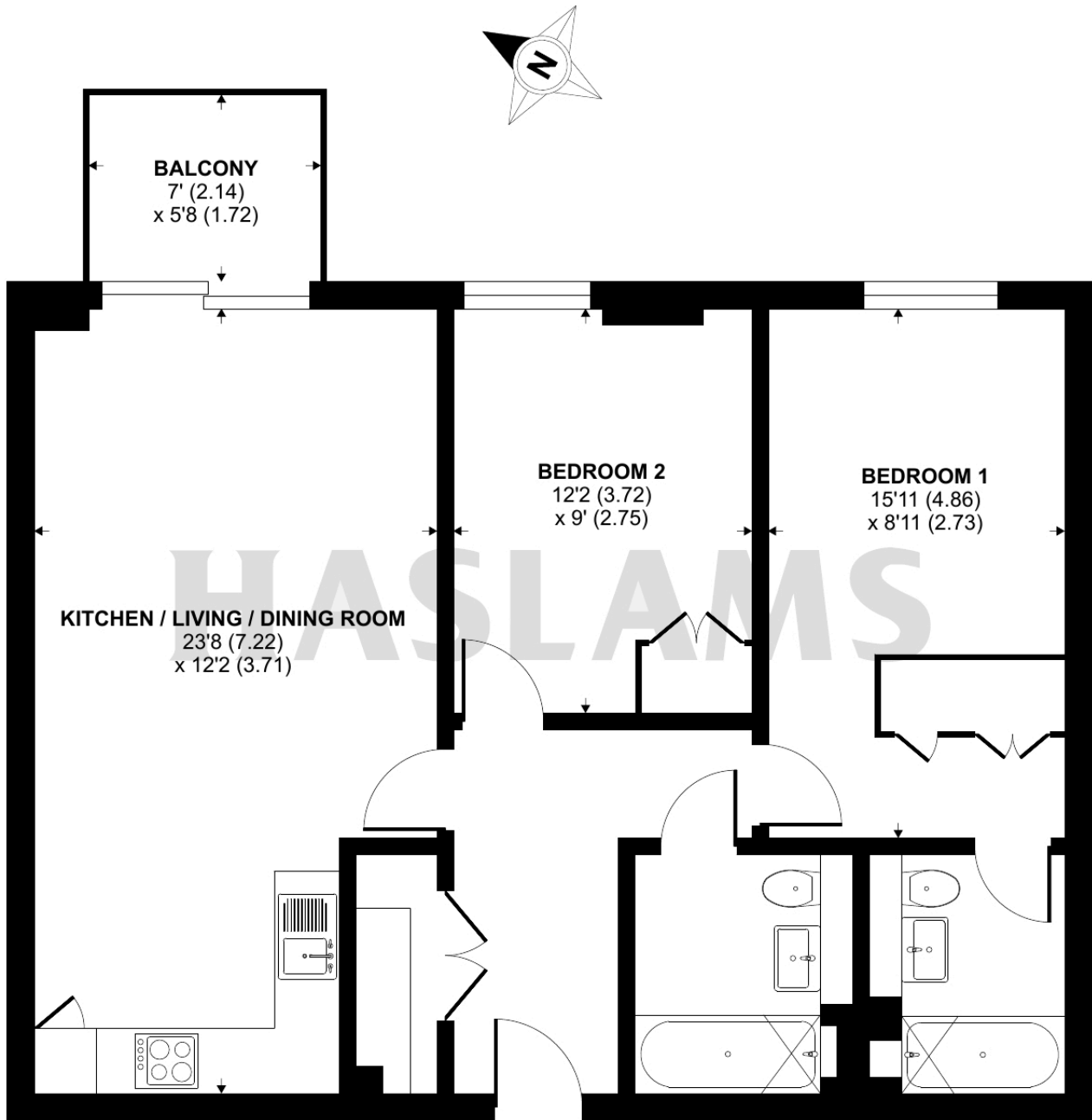
Haslams Estate Agents Ltd, 159 Friar Street, Reading, Berkshire, RG1 1HE



Palmer Street, Reading, RG1

Approximate Area = 738 sq ft / 68.5 sq m

For identification only - Not to scale



Floor plan produced in accordance with RICS Property Measurement 2nd Edition, Incorporating International Property Measurement Standards (IPMS2 Residential). © nichecom 2025. Produced for Haslams. REF: 1264974