

Property ref: 79297

## Kings Reach, Reading, RG1 3FF

**£1,350 PCM**

**HASLAM'S**  
Lettings



A superbly built, one bedroom first floor apartment situated in Reading town centre; minutes from the mainline station, Oracle shopping centre and river walks.

Reading Borough Council tax band C.

Water supply: Mains

Drainage info: Mains

Electricity supply: Mains

Broadband/Mobile Info: Connections available. For an indication of specific speeds and supply of Broadband and Mobile, we advise applicants go to the Ofcom website Broadband and Mobile Coverage Checker.

- One double bedroom; Fully fitted kitchen
- Bathroom suite
- Furnished; Electric heating
- Central Reading location
- EPC rating C; No parking
- Managed by HASLAM'S

**Available 19/12/2025**

\*Fees For Assured Shorthold Tenancies: when you rent a property from us you will be required to pay a sum equivalent to one weeks' rent for a holding deposit. Upon successful application, this amount will be off set against your first months' rent. You will also be required to pay a security deposit equivalent to 5 weeks' rent which will be held and protected in line with Deposit legislation. For more information about our fees please visit: [www.haslams.net](http://www.haslams.net)  
Fees for all other tenancies (Non Housing Act Tenancies / Company Lets): when you rent a property from us we will charge you a one-off fee per property. This charge is the equivalent of 15 days of the monthly rental charge (+VAT) with a minimum fee of £450 (inc.VAT) up to a maximum of £650 (inc.VAT). Other fees may apply depending on your circumstances.

**0118 960 1055**

**[lettings@haslams.net](mailto:lettings@haslams.net) [www.haslams.net](http://www.haslams.net)**

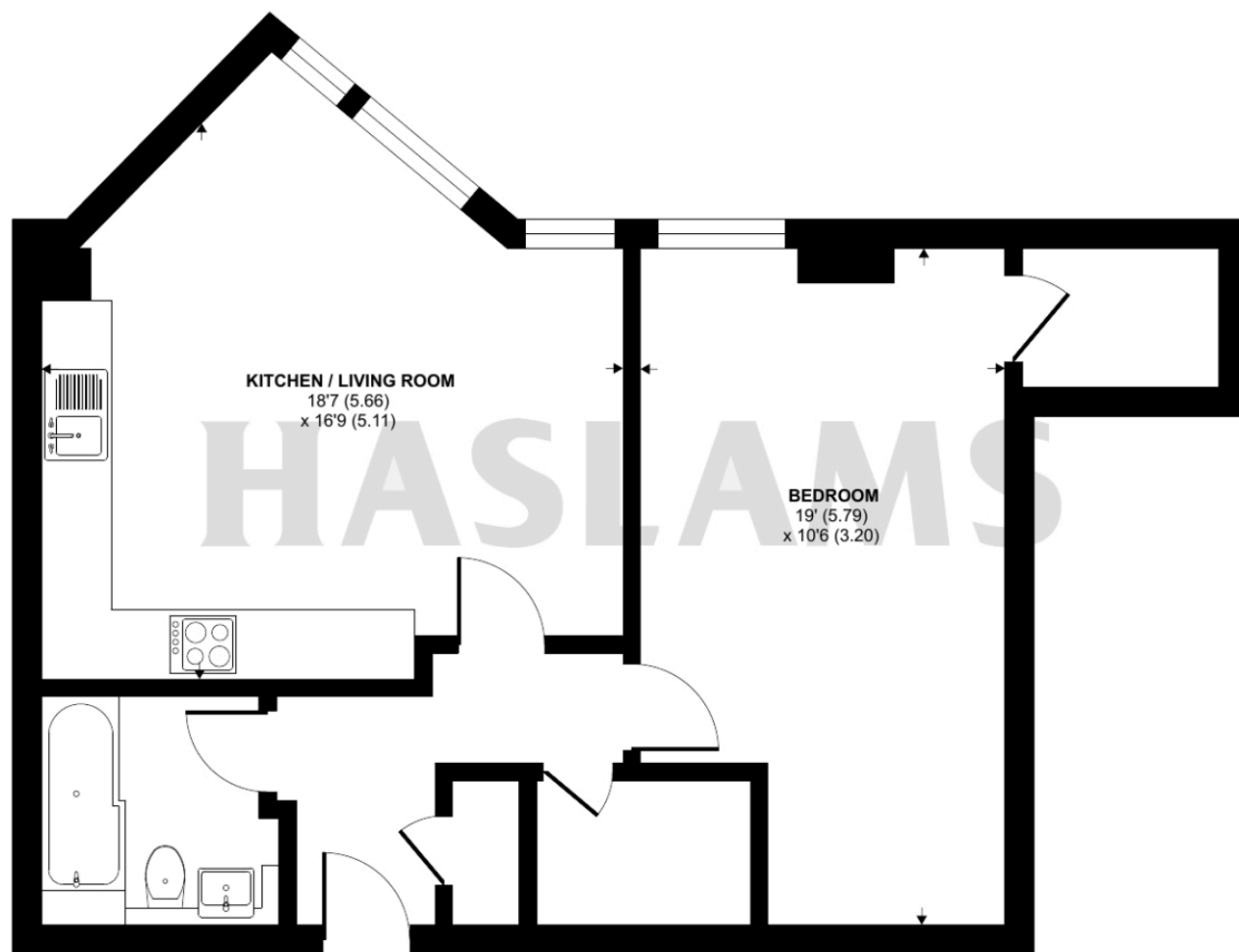
**Haslams Estate Agents Ltd, 159 Friar Street, Reading, Berkshire, RG1 1HE**



# Kings Reach, Kings Road, Reading, RG1

Approximate Area = 601 sq ft / 56 sq m

For identification only - Not to scale

**FIRST FLOOR**

Floor plan produced in accordance with RICS Property Measurement Standards incorporating International Property Measurement Standards (IPMS2 Residential). © nichecom 2022.  
Produced for Haslams. REF: 890038