

Property ref: 119248

## Blakes Quay, Reading, RG1 3EN

£1,595 PCM

**HASLAMs**  
Lettings



A beautifully presented, large two bedroom apartment within close proximity of Reading town centre. The property benefits from riverside views, allocated parking, a large fully fitted separate kitchen, spacious living room, modern bathroom suite and the option of an office/ guest second bedroom.

Reading Borough Council tax band D.

**Available 26/11/2025**

- Two bedroom town centre apartment
- River views; Private entrance
- EPC rating C; Gas central heating
- Allocated parking
- Unfurnished
- Managed by HASLAMs

\*Fees For Assured Shorthold Tenancies: when you rent a property from us you will be required to pay a sum equivalent to one weeks' rent for a holding deposit. Upon successful application, this amount will be off set against your first months' rent. You will also be required to pay a security deposit equivalent to 5 weeks' rent which will be held and protected in line with Deposit legislation. For more information about our fees please visit: [www.haslams.net](http://www.haslams.net)  
Fees for all other tenancies (Non Housing Act Tenancies / Company Lets): when you rent a property from us we will charge you a one-off fee per property. This charge is the equivalent of 15 days of the monthly rental charge (+VAT) with a minimum fee of £450 (inc.VAT) up to a maximum of £650 (inc.VAT). Other fees may apply depending on your circumstances.

**0118 960 1055**

**[lettings@haslams.net](mailto:lettings@haslams.net) [www.haslams.net](http://www.haslams.net)**

**Haslams Estate Agents Ltd, 159 Friar Street, Reading, Berkshire, RG1 1HE**

Water supply: Mains

Drainage info: Mains

Electricity supply: Mains

Gas supply: Mains

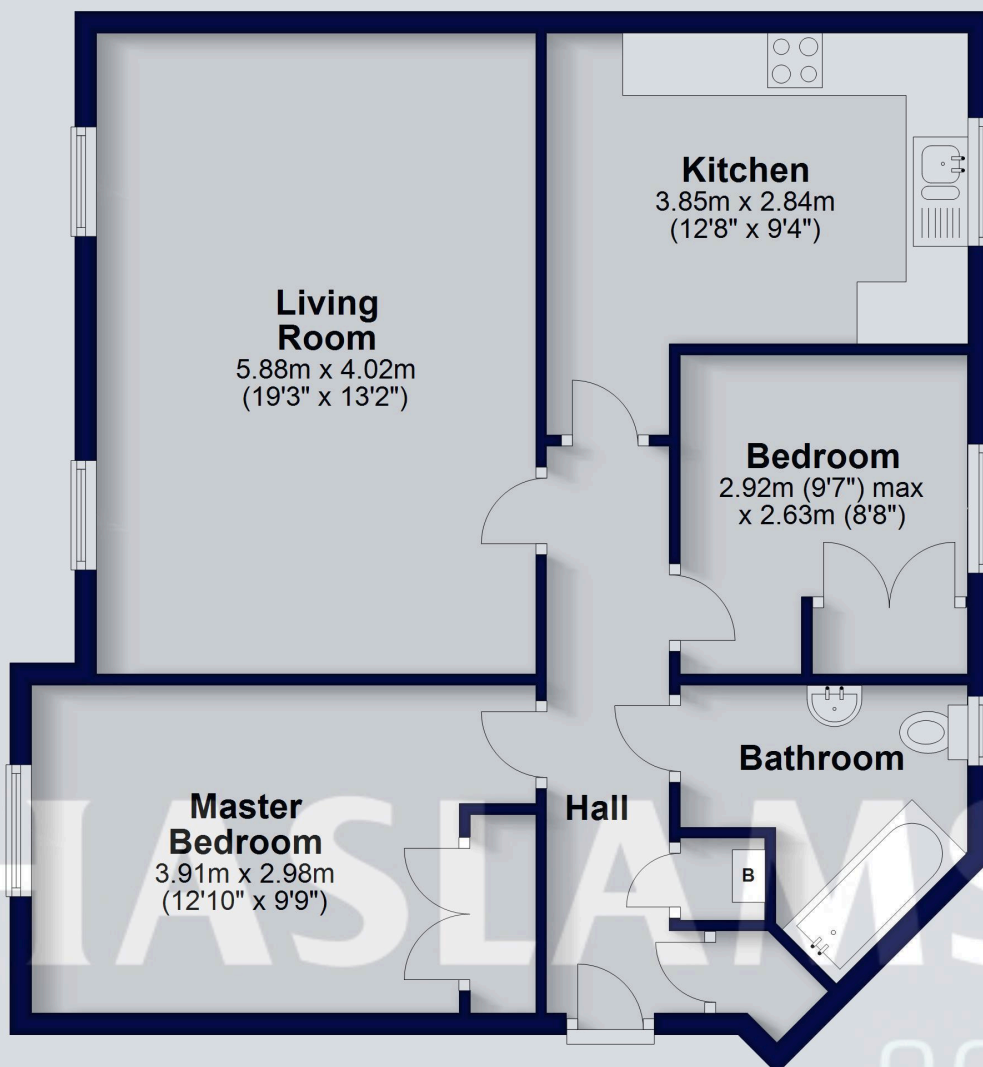
Broadband/Mobile Info: Connections available. For an indication of specific speeds and supply of Broadband and Mobile, we advise applicants go to the Ofcom website Broadband and Mobile Coverage Checker.





## Ground Floor

Approx. 72.1 sq. metres (776.6 sq. feet)



Total area: approx. 72.1 sq. metres (776.6 sq. feet)

This floorplan is for illustrative purposes only and is not to scale. The total area includes all the areas shown.

Plan produced using PlanUp.