

Property ref: 176073

Lanesborough Street, Reading, RG2 6BS

£2,500 PCM

HASLAM'S
Lettings



A brand new three bedroom town house situated in the desirable Green Park Village development to the south of Reading. This stunning home benefits from ample living space across four storeys, a balcony, a private terrace, two allocated parking spaces, and easy access to the M4 Motorway.
Reading Borough Council tax band E.

Available Now

- Three double bedrooms and one office space; Downstairs W/C
- One family bathroom and a further en-suite to the master bedroom
- Top floor bedroom with a private terrace; Master bedroom with a balcony on the third floor
- Fully fitted kitchen with appliances; Gas central heating
- Two allocated parking spaces and two visitor permits; EPC rating B
- Unfurnished; Managed by HASLAM'S

*Fees For Assured Shorthold Tenancies: when you rent a property from us you will be required to pay a sum equivalent to one weeks' rent for a holding deposit. Upon successful application, this amount will be off set against your first months' rent. You will also be required to pay a security deposit equivalent to 5 weeks' rent which will be held and protected in line with Deposit legislation. For more information about our fees please visit: www.haslams.net
Fees for all other tenancies (Non Housing Act Tenancies / Company Lets): when you rent a property from us we will charge you a one-off fee per property. This charge is the equivalent of 15 days of the monthly rental charge (+VAT) with a minimum fee of £450 (inc.VAT) up to a maximum of £650 (inc.VAT). Other fees may apply depending on your circumstances.

0118 960 1055

lettings@haslams.net www.haslams.net

Haslams Estate Agents Ltd, 159 Friar Street, Reading, Berkshire, RG1 1HE

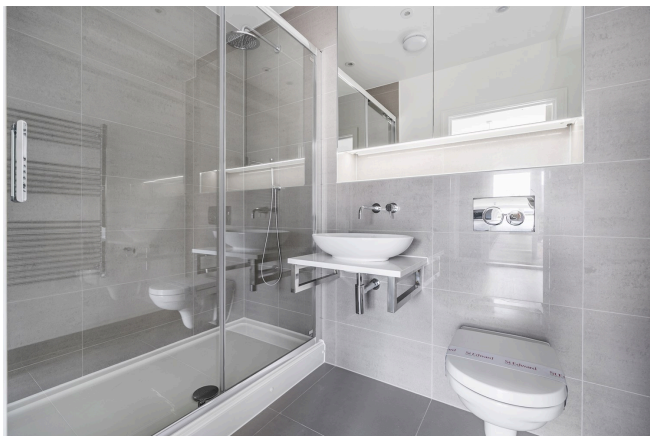
Water supply: Mains

Drainage info: Mains

Electricity supply: Mains

Gas supply: Mains

Broadband/Mobile Info: Connections available. For an indication of specific speeds and supply of Broadband and Mobile, we advise applicants go to the Ofcom website Broadband and Mobile Coverage Checker.





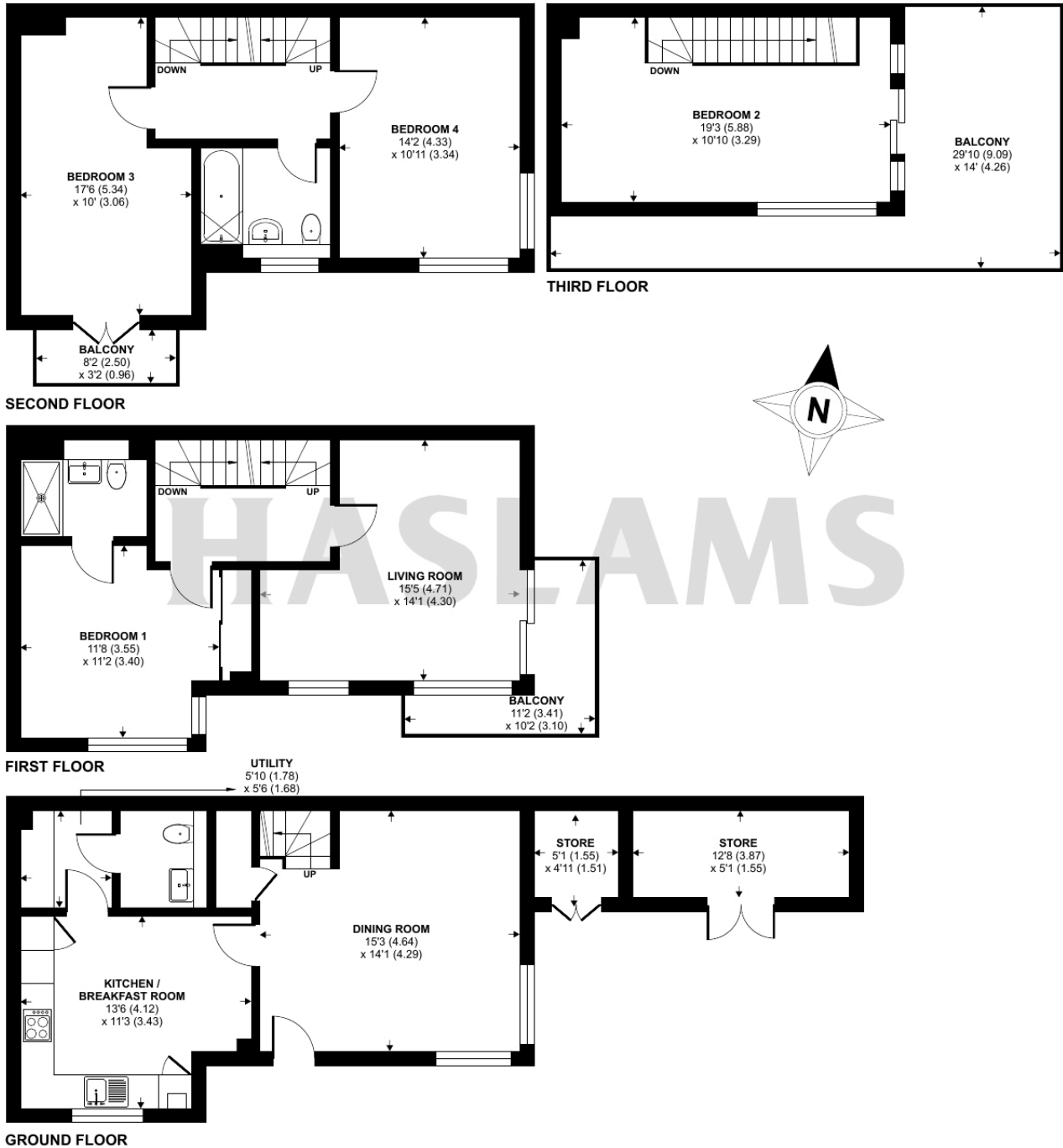
Lanesborough Street, Reading, RG2

Approximate Area = 1543 sq ft / 143.3 sq m

Outbuildings = 90 sq ft / 8.3 sq m

Total = 1633 sq ft / 151.6 sq m

For identification only - Not to scale



Floor plan produced in accordance with RICS Property Measurement 2nd Edition, Incorporating International Property Measurement Standards (IPMS2 Residential). © nichecom 2025. Produced for Haslam's. REF: 1355195