

Property ref: 1703

Halcyon, Reading, RG1 7JW

£1,450 PCM

HASLAM'S
Lettings



A modern two bedroom second floor apartment located within an impressive development on the western fringe of the town centre. Reading Borough Council Tax Band D.

Water supply: Mains

Drainage info: Mains

Electricity supply: Mains

Gas supply: Mains

Broadband/Mobile Info: Connections available. For an indication of specific speeds and supply of Broadband and Mobile, we advise applicants go to the Ofcom website Broadband and Mobile Coverage Checker.

Available Now

- Two double bedrooms with built-in wardrobes; Master with en-suite shower room
- Open plan living room/kitchen; wood floors to living areas
- Modern fitted kitchen with a range of integrated appliances
- Further bathroom with shower over bath; Gas central heating
- Allocated parking; On-site concierge service; EPC rating B
- Unfurnished; Managed by HASLAM'S

*Fees For Assured Shorthold Tenancies: when you rent a property from us you will be required to pay a sum equivalent to one weeks' rent for a holding deposit. Upon successful application, this amount will be off set against your first months' rent. You will also be required to pay a security deposit equivalent to 5 weeks' rent which will be held and protected in line with Deposit legislation. For more information about our fees please visit: www.haslams.net
Fees for all other tenancies (Non Housing Act Tenancies / Company Lets): when you rent a property from us we will charge you a one-off fee per property. This charge is the equivalent of 15 days of the monthly rental charge (+VAT) with a minimum fee of £450 (inc. VAT) up to a maximum of £650 (inc. VAT). Other fees may apply depending on your circumstances.

0118 960 1055

lettings@haslams.net www.haslams.net

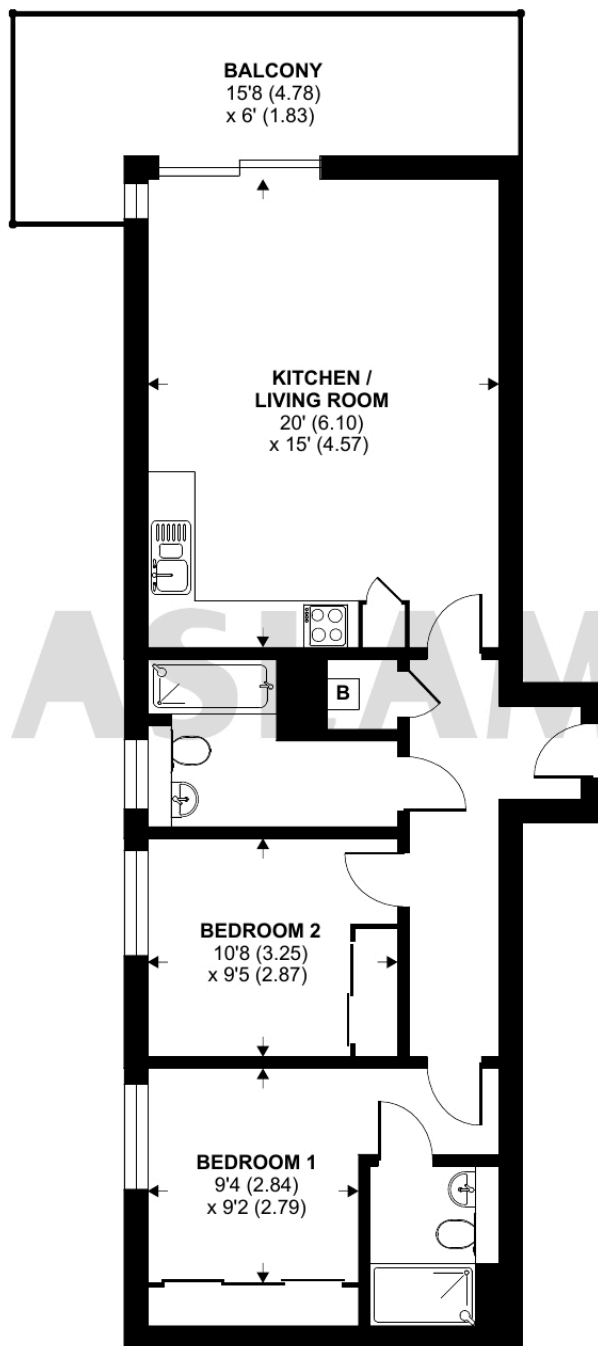
Haslams Estate Agents Ltd, 159 Friar Street, Reading, Berkshire, RG1 1HE



Chatham Place, Reading, RG1

Approximate Area = 749 sq ft / 69.5 sq m

For identification only - Not to scale

**SECOND FLOOR**

Floor plan produced in accordance with RICS Property Measurement 2nd Edition,
Incorporating International Property Measurement Standards (IPMS2 Residential). © n̄checon 2025.
Produced for Haslamss. REF: 1380118