

Property ref: 1569

Shelley Court, Reading, RG1 5DG

£1,425 PCM

HASLAM'S
Lettings



A well presented two bedroom 1st floor apartment situated within a gated development and convenient for Reading town centre, Royal Berkshire Hospital and the Eldon Square conservation area. Reading Borough Council tax band D.

Available 04/11/2025

- Two double bedrooms; En-suite shower to master bedroom
- Lounge/dining room with balcony doors opening to communal gardens
- Kitchen including appliances; Gas central heating
- Allocated parking; EPC rating C
- Convenient for town centre and Royal Berkshire Hospital
- Furnished; Managed by HASLAM'S

*Fees For Assured Shorthold Tenancies: when you rent a property from us you will be required to pay a sum equivalent to one weeks' rent for a holding deposit. Upon successful application, this amount will be off set against your first months' rent. You will also be required to pay a security deposit equivalent to 5 weeks' rent which will be held and protected in line with Deposit legislation. For more information about our fees please visit: www.haslams.net
Fees for all other tenancies (Non Housing Act Tenancies / Company Lets): when you rent a property from us we will charge you a one-off fee per property. This charge is the equivalent of 15 days of the monthly rental charge (+VAT) with a minimum fee of £450 (inc.VAT) up to a maximum of £650 (inc.VAT). Other fees may apply depending on your circumstances.

0118 960 1055

lettings@haslams.net www.haslams.net

Haslams Estate Agents Ltd, 159 Friar Street, Reading, Berkshire, RG1 1HE

Water supply: Mains

Drainage info: Mains

Electricity supply: Mains

Gas supply: Mains

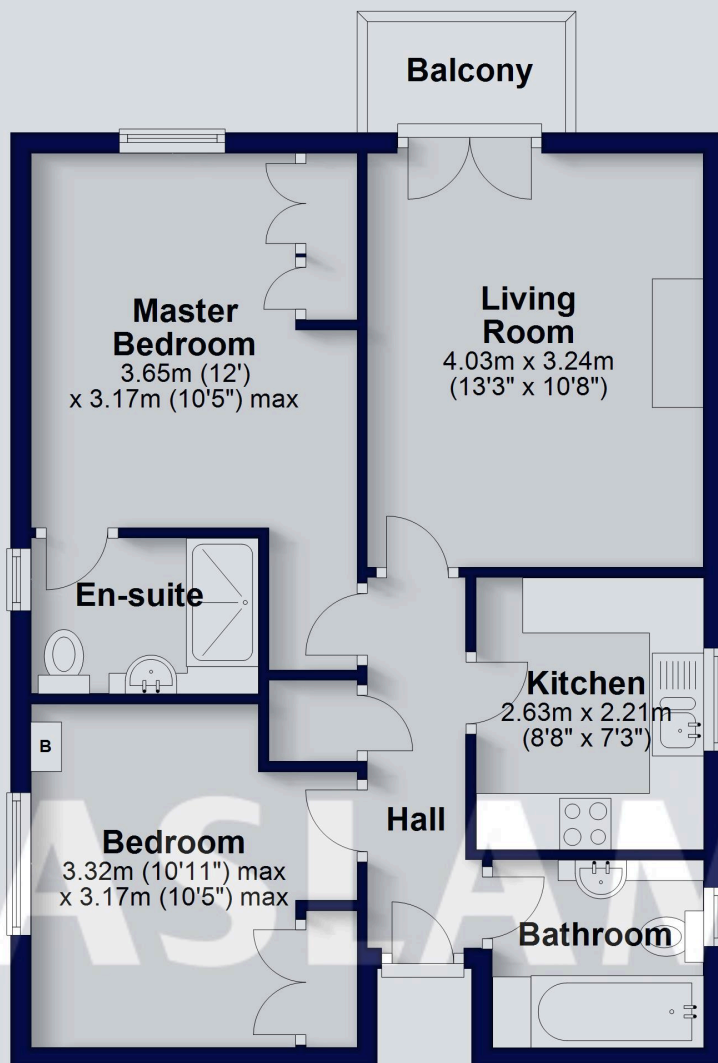
Broadband/Mobile Info: Connections available. For an indication of specific speeds and supply of Broadband and Mobile, we advise applicants go to the Ofcom website Broadband and Mobile Coverage Checker.





First Floor

Approx. 55.5 sq. metres (596.9 sq. feet)



Total area: approx. 55.5 sq. metres (596.9 sq. feet)

This floorplan is for illustrative purposes only and is not to scale. The total area includes all the areas shown.

Plan produced using PlanUp.