

Property ref: 116308

## Eldon Lodge, Reading, RG1 4NH

**£1,600 PCM**

**HASLAM'S**  
Lettings



A ground floor two bedroom apartment located within this impressive Grade II listed conversion within the Eldon Conservation Area; convenient for Royal Berkshire Hospital, town centre and railway station.  
Reading Borough Council tax band C.

**Available 06/10/2025**

- Two double size bedrooms with built-in wardrobes
- Bathroom with independent shower above bath
- Open plan living room/kitchen; EPC Rating C
- Modern kitchen including appliances; Gas central heating
- Secure gated grounds with allocated parking
- Furnished; Managed by HASLAM'S

\*Fees For Assured Shorthold Tenancies: when you rent a property from us you will be required to pay a sum equivalent to one weeks' rent for a holding deposit. Upon successful application, this amount will be off set against your first months' rent. You will also be required to pay a security deposit equivalent to 5 weeks' rent which will be held and protected in line with Deposit legislation. For more information about our fees please visit: [www.haslams.net](http://www.haslams.net)  
Fees for all other tenancies (Non Housing Act Tenancies / Company Lets): when you rent a property from us we will charge you a one-off fee per property. This charge is the equivalent of 15 days of the monthly rental charge (+VAT) with a minimum fee of £450 (inc.VAT) up to a maximum of £650 (inc.VAT). Other fees may apply depending on your circumstances.

**0118 960 1055**

**[lettings@haslams.net](mailto:lettings@haslams.net) [www.haslams.net](http://www.haslams.net)**

**Haslams Estate Agents Ltd, 159 Friar Street, Reading, Berkshire, RG1 1HE**

Water supply: Mains

Drainage info: Mains

Electricity supply: Mains

Gas supply: Mains

Broadband/Mobile Info: Connections available. For an indication of specific speeds and supply of Broadband and Mobile, we advise applicants go to the Ofcom website 'Broadband and Mobile Coverage Checker'.

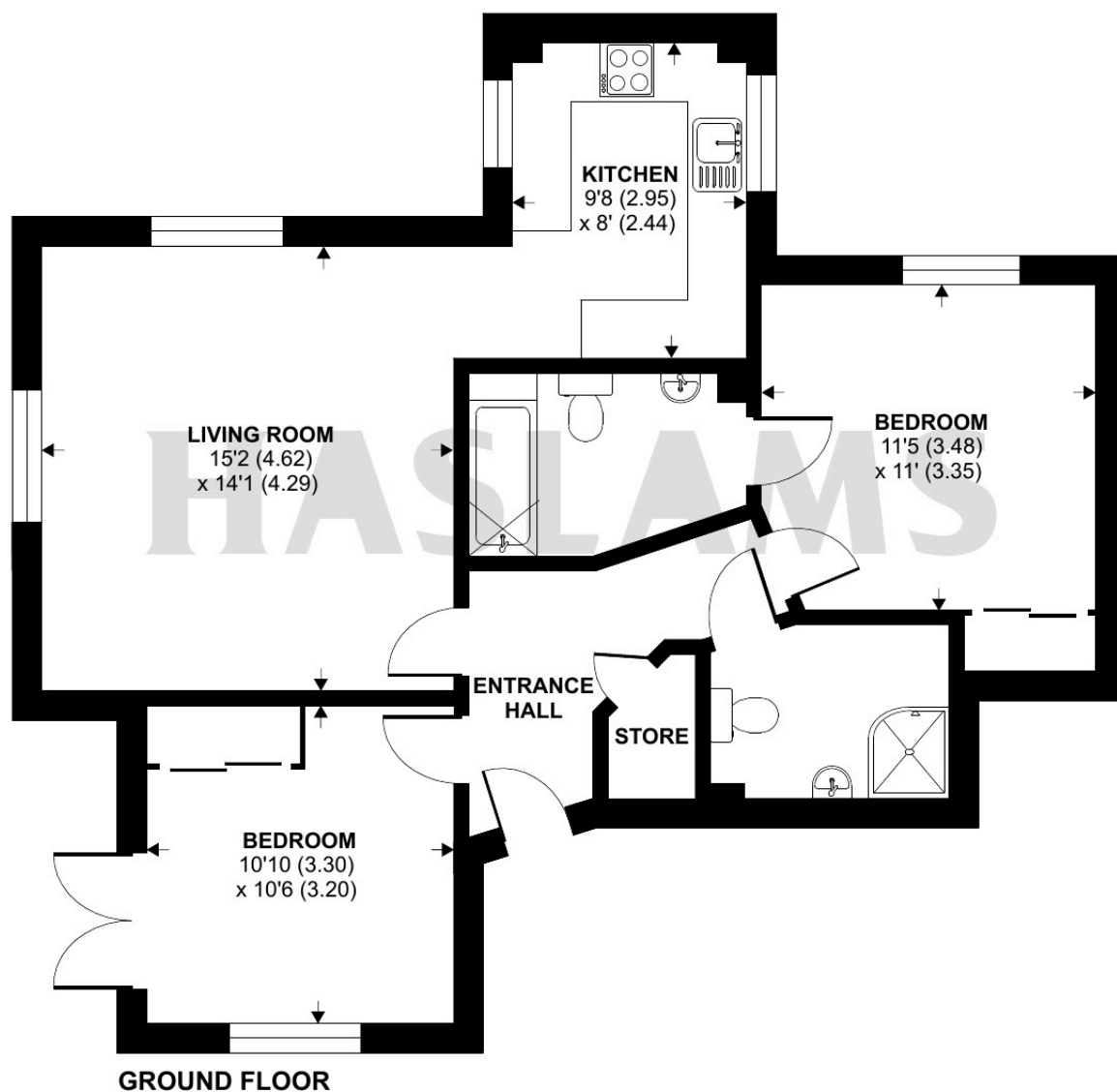




# Kings Road, Reading, RG1

Approximate Area = 760 sq ft / 70.6 sq m

For identification only - Not to scale



Floor plan produced in accordance with RICS Property Measurement 2nd Edition, Incorporating International Property Measurement Standards (IPMS2 Residential). © n°checom 2025. Produced for Haslam's. REF: 1236648