

Property ref: 160560

Prince Of Wales Avenue, Reading, RG30 2UJ

£1,100 PCM

HASLAM'S
Lettings



A well presented first floor maisonette located just a short walk from both Reading West and mainline station, as well as Reading town centre. The property further benefits from a fully fitted kitchen and modern bathroom.

Reading Borough Council tax band B.

Water supply: Mains

Drainage info: Mains

Electricity supply: Mains

Broadband/Mobile Info: Connections available. For an indication of specific speeds and supply of Broadband and Mobile, we advise applicants go to the Ofcom website 'Broadband and Mobile Coverage Checker'

- One bedroom top floor maisonette
- Fully fitted modern kitchen with appliances
- Modern bathroom
- Unfurnished; Parking Permit
- EPC rating D; Electric heating
- Managed by HASLAM'S

Available 30/09/2025

*Fees For Assured Shorthold Tenancies: when you rent a property from us you will be required to pay a sum equivalent to one weeks' rent for a holding deposit. Upon successful application, this amount will be off set against your first months' rent. You will also be required to pay a security deposit equivalent to 5 weeks' rent which will be held and protected in line with Deposit legislation. For more information about our fees please visit: www.haslams.net
Fees for all other tenancies (Non Housing Act Tenancies / Company Lets): when you rent a property from us we will charge you a one-off fee per property. This charge is the equivalent of 15 days of the monthly rental charge (+VAT) with a minimum fee of £450 (inc.VAT) up to a maximum of £650 (inc.VAT). Other fees may apply depending on your circumstances.

0118 960 1055

lettings@haslams.net www.haslams.net

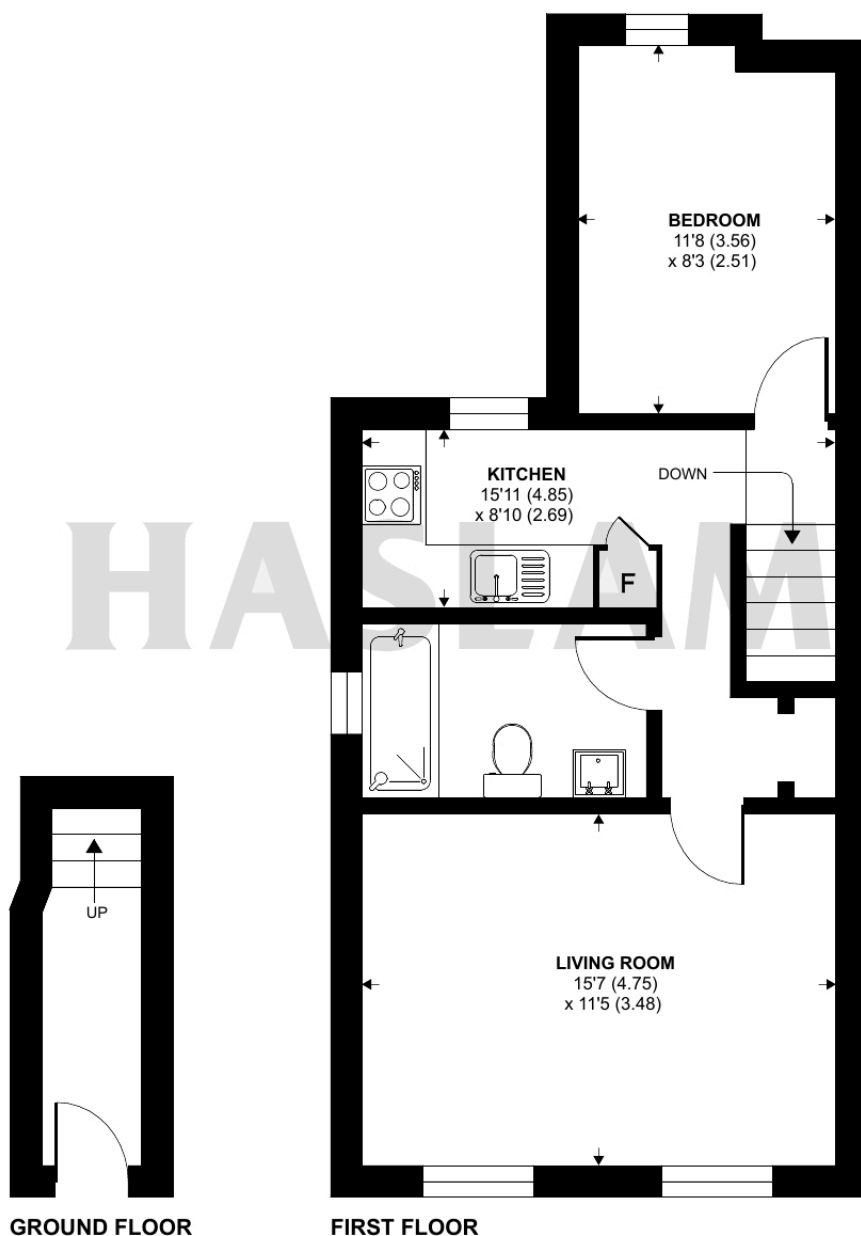
Haslams Estate Agents Ltd, 159 Friar Street, Reading, Berkshire, RG1 1HE



Prince Of Wales Avenue, Reading, RG30

Approximate Area = 446 sq ft / 41.4 sq m

For identification only - Not to scale



GROUND FLOOR

FIRST FLOOR

**Certified
Property
Measurer**

Floor plan produced in accordance with RICS Property Measurement Standards incorporating International Property Measurement Standards (IPMS2 Residential). © n1cheom 2024.
Produced for Haslamss. REF: 1177253