

Property ref: 89020

Montagu House, Reading, RG2 0PY

£1,250 PCM

HASLAM'S
Lettings



A modern one bedroom top floor apartment. This well decorated and homely property is situated in the sought-after Kennet Island development, within waling distance of Green Park, local amenities and with easy access to the M4 motorway. Property boasts an appliances, two televisions, bedding & a crockery pots & pans. Reading Borough Council tax band C.

Water supply: Mains

Drainage info: Mains

Electricity supply: Mains

Broadband/Mobile Info: Connections available. For an indication of specific speeds and supply of Broadband and Mobile, we advise applicants go to the Ofcom website Broadband and Mobile Coverage Checker.

- A spacious, light and airy open plan living/kitchen area
- Double bedroom with built-in wardrobes
- Shower room; Allocated parking
- Furnished; EPC rating C
- Walking distance to local amenities and bus routes
- Electric heating; Managed by HASLAM'S

Available 15/08/2025

will be required to pay a sum equivalent to one weeks' rent for a holding deposit. Upon successful application, this amount will be off set against your first months' rent. You will also be required to pay a security deposit equivalent to 5 weeks' rent which will be held and protected in line with Deposit legislation. For more information about our fees please visit: www.haslams.net
Fees for all other tenancies (Non Housing Act Tenancies / Company Lets): when you rent a property from us we will charge you a one-off fee per property. This charge is the equivalent of 15 days of the monthly rental charge (+VAT) with a minimum fee of £450 (inc.VAT) up to a maximum of £650 (inc.VAT). Other fees may apply depending on your circumstances.

0118 960 1055

lettings@haslams.net www.haslams.net

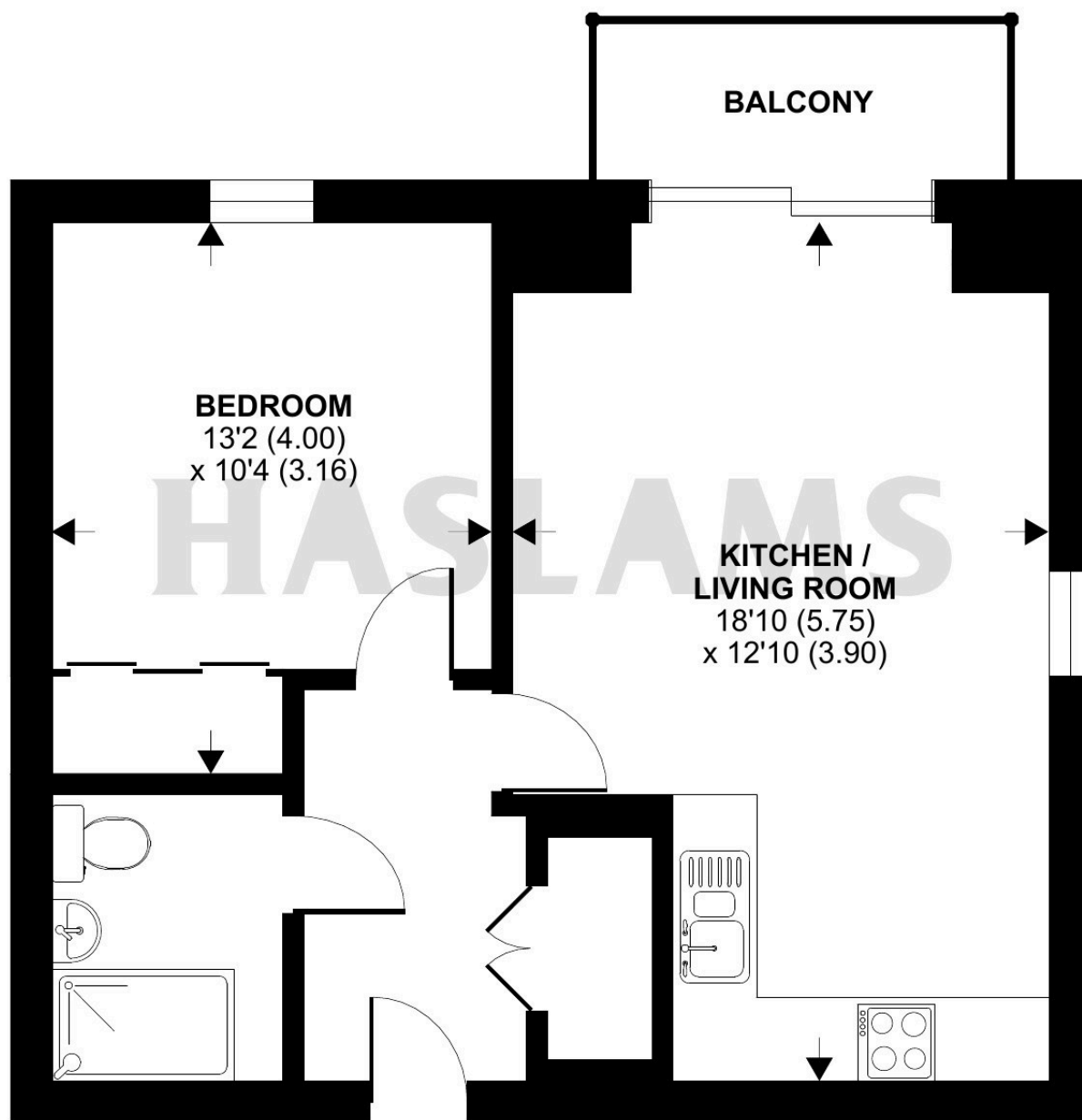
Haslams Estate Agents Ltd, 159 Friar Street, Reading, Berkshire, RG1 1HE





Approximate Area = 487 sq ft / 45.2 sq m

For identification only - Not to scale



SIXTH FLOOR



Floor plan produced in accordance with RICS Property Measurement Standards incorporating International Property Measurement Standards (IPMS2 Residential). © n1cheom 2024. Produced for Haslamss. REF: 1124214