

Property ref: 117956

Stonemasons Court, Reading, RG1 7YG

£1,500 PCM

HASLAM'S
Lettings



A two double bedroom first floor apartment within walking distance to the town centre and mainline station. The property benefits from two parking spaces behind a gated entrance. Open plan fully integrated kitchen living room and two bathrooms. Property ideal for a professional couple or single occupant. Reading Borough Council tax band D.

- Two double bedrooms with wardrobes
- Two bathrooms master with en-suite; Electric heating
- Fully fitted kitchen with appliances; EPC rating B
- Two parking spaces within a gated development
- Central location close to Reading mainline station
- Unfurnished, wardrobes included; Managed by LANDLORD

Available 15/09/2025

*Fees For Assured Shorthold Tenancies: when you rent a property from us you will be required to pay a sum equivalent to one weeks' rent for a holding deposit. Upon successful application, this amount will be off set against your first months' rent. You will also be required to pay a security deposit equivalent to 5 weeks' rent which will be held and protected in line with Deposit legislation. For more information about our fees please visit: www.haslams.net
Fees for all other tenancies (Non Housing Act Tenancies / Company Lets): when you rent a property from us we will charge you a one-off fee per property. This charge is the equivalent of 15 days of the monthly rental charge (+VAT) with a minimum fee of £450 (inc.VAT) up to a maximum of £650 (inc.VAT). Other fees may apply depending on your circumstances.

0118 960 1055

lettings@haslams.net www.haslams.net

Haslams Estate Agents Ltd, 159 Friar Street, Reading, Berkshire, RG1 1HE

Water supply: Mains

Drainage info: Mains

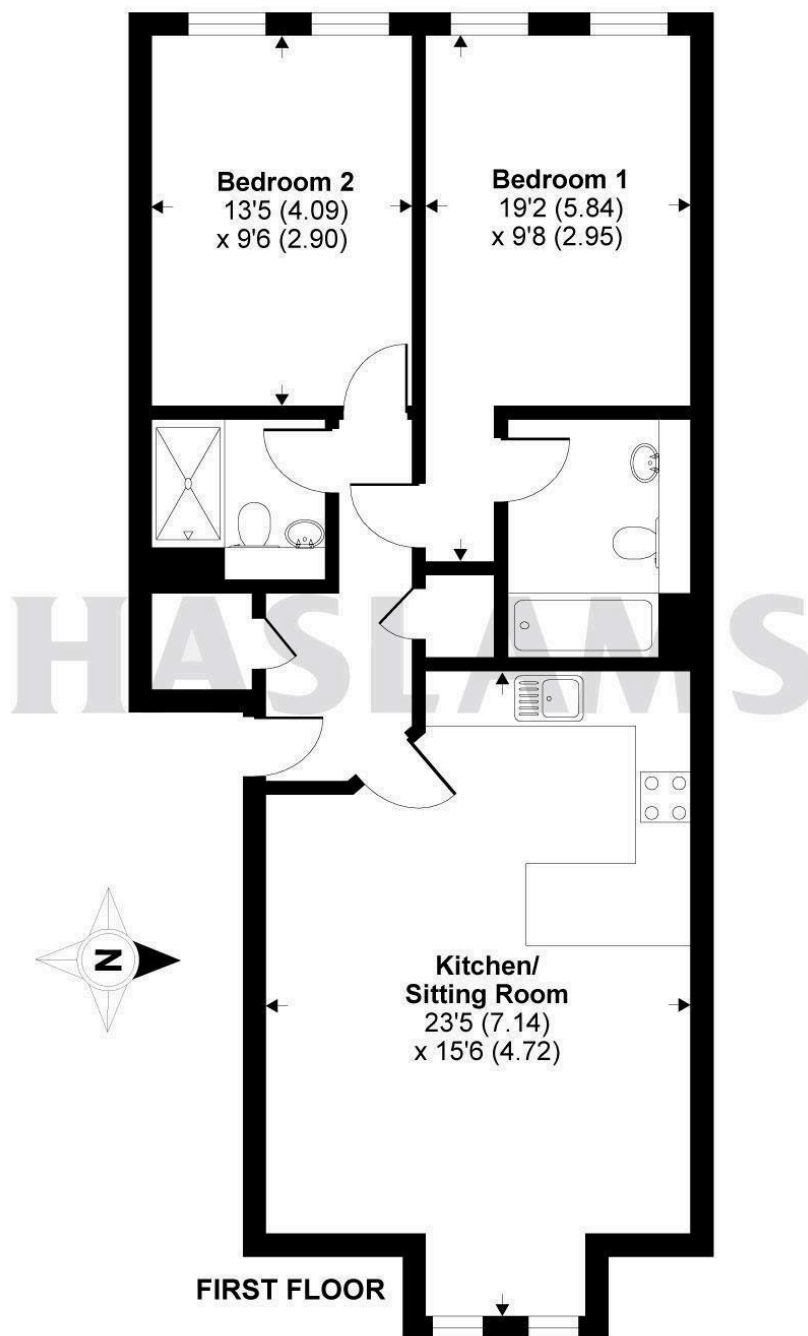
Electricity supply: Mains

Broadband/Mobile Info: Connections available. For an indication of specific speeds and supply of Broadband and Mobile, we advise applicants go to the Ofcom website Broadband and Mobile Coverage Checker.



Prospect Street, Reading, RG1

APPROX. GROSS INTERNAL FLOOR AREA 793 SQ FT 73.6 SQ METRES



Whilst every attempt has been made to ensure the accuracy of the floor plan contained here, measurements of doors, windows and rooms are approximate and no responsibility is taken for any error, omission or misstatement. These plans are for representation purposes only as defined by RICS Code of Measuring Practice and should be used as such by any prospective purchaser. Specifically no guarantee is given on the total square footage of the property if quoted on this plan. Any figure given is for initial guidance only and should not be relied on as a basis of valuation.

Copyright nichecom.co.uk 2019 Produced for Haslams REF : 558653