

Property ref: 61522

Honister, Reading, RG1 7AH

£1,795 PCM

HASLAMs
Lettings



A modern seventh floor apartment located in an impressive development in the town centre within walking distance of Reading mainline station. Reading Borough Council tax band D.

Water supply: Mains

Drainage info: Mains

Electricity supply: Mains

Broadband/Mobile Info: Connections available. For an indication of specific speeds and supply of Broadband and Mobile, we advise applicants go to the Ofcom website 'Broadband and Mobile Coverage Checker'.

Available 26/09/2025

- Two double bedrooms; Master with built-in wardrobes
- Open plan living room/kitchen with wood flooring; Furnished
- Fully fitted kitchen with integrated appliances; Secure allocated parking
- En-suite bathroom to master; Further family bathroom
- Sundry payment of £80pcm on top of the rent to cover hot water and heating via communal boiler
- EPC Rating C; Managed by HASLAMs

*Fees For Assured Shorthold Tenancies: when you rent a property from us you will be required to pay a sum equivalent to one weeks' rent for a holding deposit. Upon successful application, this amount will be off set against your first months' rent. You will also be required to pay a security deposit equivalent to 5 weeks' rent which will be held and protected in line with Deposit legislation. For more information about our fees please visit: www.haslamss.net
Fees for all other tenancies (Non Housing Act Tenancies / Company Lets): when you rent a property from us we will charge you a one-off fee per property. This charge is the equivalent of 15 days of the monthly rental charge (+VAT) with a minimum fee of £450 (inc.VAT) up to a maximum of £650 (inc.VAT). Other fees may apply depending on your circumstances.

0118 960 1055

lettings@haslamss.net www.haslamss.net

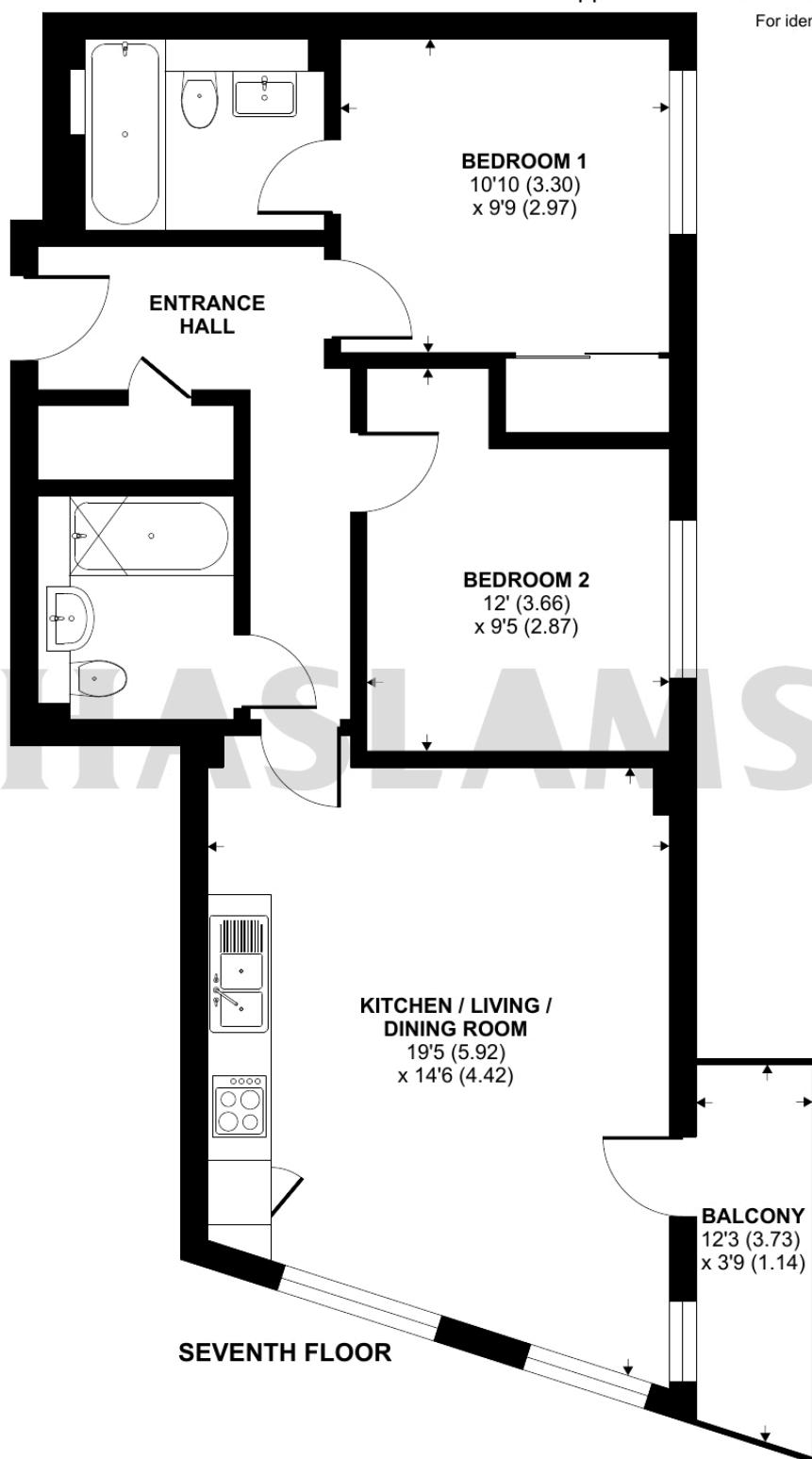
Haslamss Estate Agents Ltd, 159 Friar Street, Reading, Berkshire, RG1 1HE



Honister, Alfred Street, Reading, RG1

Approximate Area = 687 sq ft / 63.8 sq m

For identification only - Not to scale



**Certified
Property
Measurer**

Floor plan produced in accordance with RICS Property Measurement Standards incorporating International Property Measurement Standards (IPMS2 Residential). © n1cheom 2024. Produced for Haslamss. REF: 1162782