

Property ref: 110556

Massachusetts Place, Reading, RG2 6AP

£1,750 PCM**HASLAM'S**
Lettings

A rare opportunity to acquire this modern mews house in the exclusive Green Park development. The property benefits from two double bedrooms, open plan living / kitchen area, two bathrooms and garage parking. Reading Borough Council tax band C.

Available 22/08/2025

- Two double bedrooms
- Garage parking
- Close links to M4
- EPC rating B
- Gas central heating
- Furnished; Managed by HASLAM'S

*Fees For Assured Shorthold Tenancies: when you rent a property from us you will be required to pay a sum equivalent to one weeks' rent for a holding deposit. Upon successful application, this amount will be off set against your first months' rent. You will also be required to pay a security deposit equivalent to 5 weeks' rent which will be held and protected in line with Deposit legislation. For more information about our fees please visit: www.haslams.net
Fees for all other tenancies (Non Housing Act Tenancies / Company Lets): when you rent a property from us we will charge you a one-off fee per property. This charge is the equivalent of 15 days of the monthly rental charge (+VAT) with a minimum fee of £450 (inc.VAT) up to a maximum of £650 (inc.VAT). Other fees may apply depending on your circumstances.

0118 960 1055**lettings@haslams.net www.haslams.net****Haslams Estate Agents Ltd, 159 Friar Street, Reading, Berkshire, RG1 1HE**

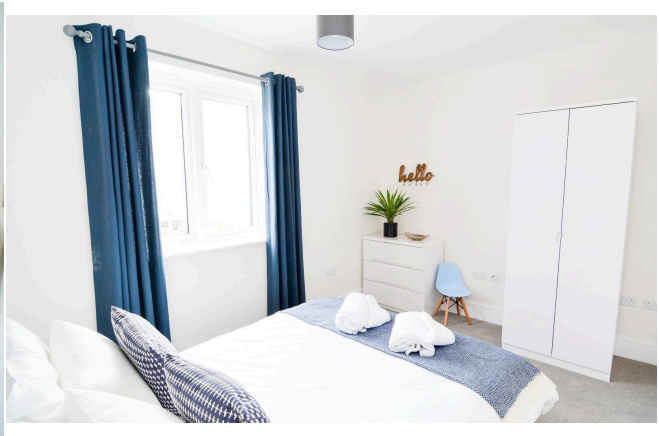
Water supply: Mains

Drainage info: Mains

Electricity supply: Mains

Gas supply: Mains

Broadband/Mobile Info: Connections available. For an indication of specific speeds and supply of Broadband and Mobile, we advise applicants go to the Ofcom website Broadband and Mobile Coverage Checker.



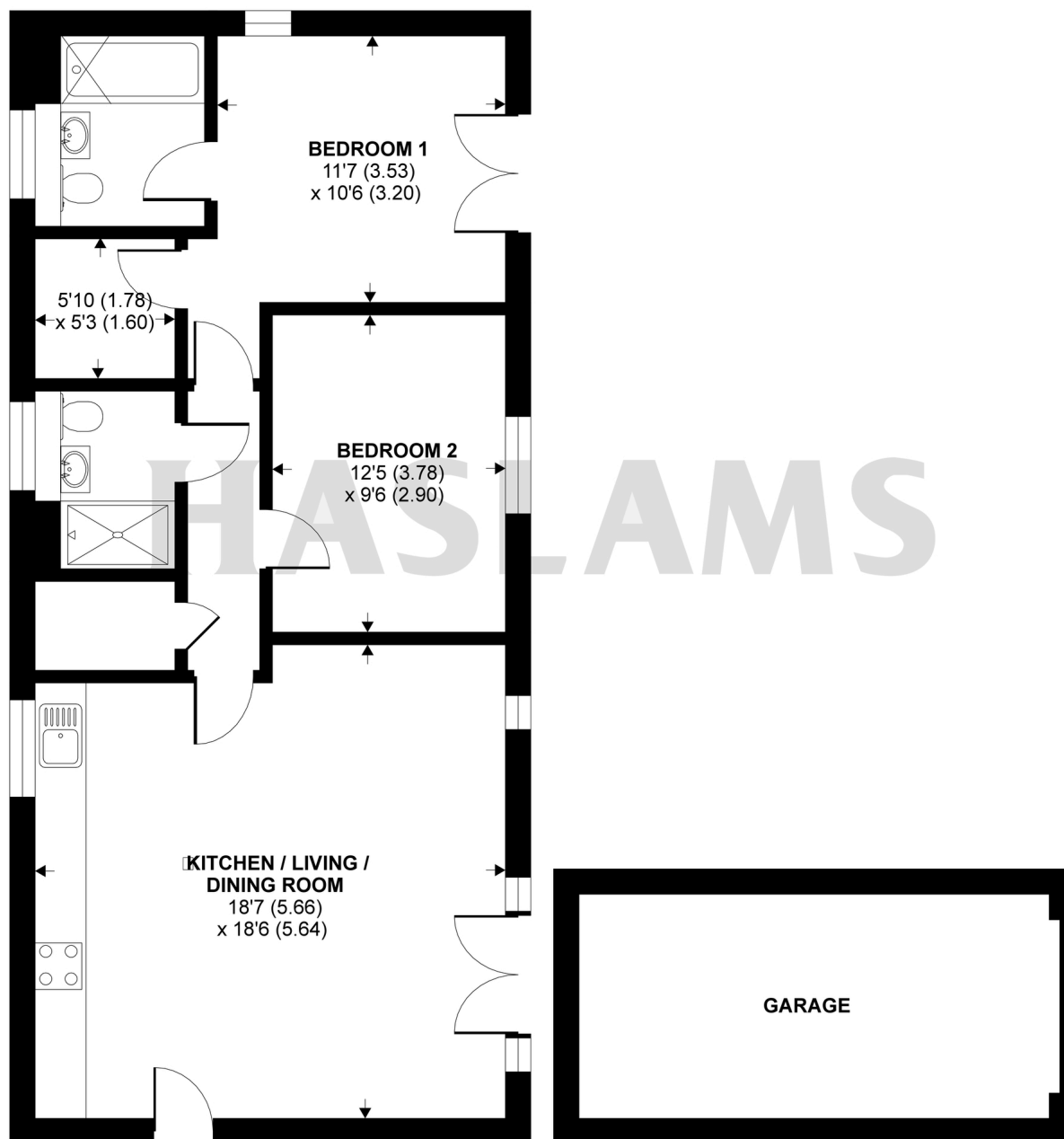
Massachusetts Place, Reading, RG2

Approximate Area = 789 sq ft / 73.3 sq m

Outbuilding = 163 sq ft / 15.1 sq m

Total = 952 sq ft / 88.4 sq m

For identification only - Not to scale



GROUND FLOOR



Floor plan produced in accordance with RICS Property Measurement Standards incorporating International Property Measurement Standards (IPMS2 Residential). © nichecom 2021.
Produced for Haslamss. REF: 704299