

Property ref: 71402

## Hanover House, Reading, RG1 4NN

**£1,400 PCM**

**HASLAMs**  
Lettings



A modern, stylish, two bedroom, first floor apartment ideally situated in Reading town centre. The property offers city living for a working professional and is within close proximity of Reading mainline station. Reading Borough Council Tax Band C.

Water supply: Mains

Drainage info: Mains

Electricity supply: Mains

Broadband/Mobile Info: Connections available. For an indication of specific speeds and supply of Broadband and Mobile, we advise applicants go to the Ofcom website 'Broadband and Mobile Coverage Checker'.

- Two double bedrooms
- Fully fitted kitchen with appliances
- Electric heating
- EPC Rating E
- Allocated parking
- Furnished; Managed by HASLAMs

**Available 21/08/2025**

\*Fees For Assured Shorthold Tenancies: when you rent a property from us you will be required to pay a sum equivalent to one weeks' rent for a holding deposit. Upon successful application, this amount will be off set against your first months' rent. You will also be required to pay a security deposit equivalent to 5 weeks' rent which will be held and protected in line with Deposit legislation. For more information about our fees please visit: [www.haslamss.net](http://www.haslamss.net)  
Fees for all other tenancies (Non Housing Act Tenancies / Company Lets): when you rent a property from us we will charge you a one-off fee per property. This charge is the equivalent of 15 days of the monthly rental charge (+VAT) with a minimum fee of £450 (inc.VAT) up to a maximum of £650 (inc.VAT). Other fees may apply depending on your circumstances.

**0118 960 1055**

**[lettings@haslamss.net](mailto:lettings@haslamss.net) [www.haslamss.net](http://www.haslamss.net)**

**Haslamss Estate Agents Ltd, 159 Friar Street, Reading, Berkshire, RG1 1HE**

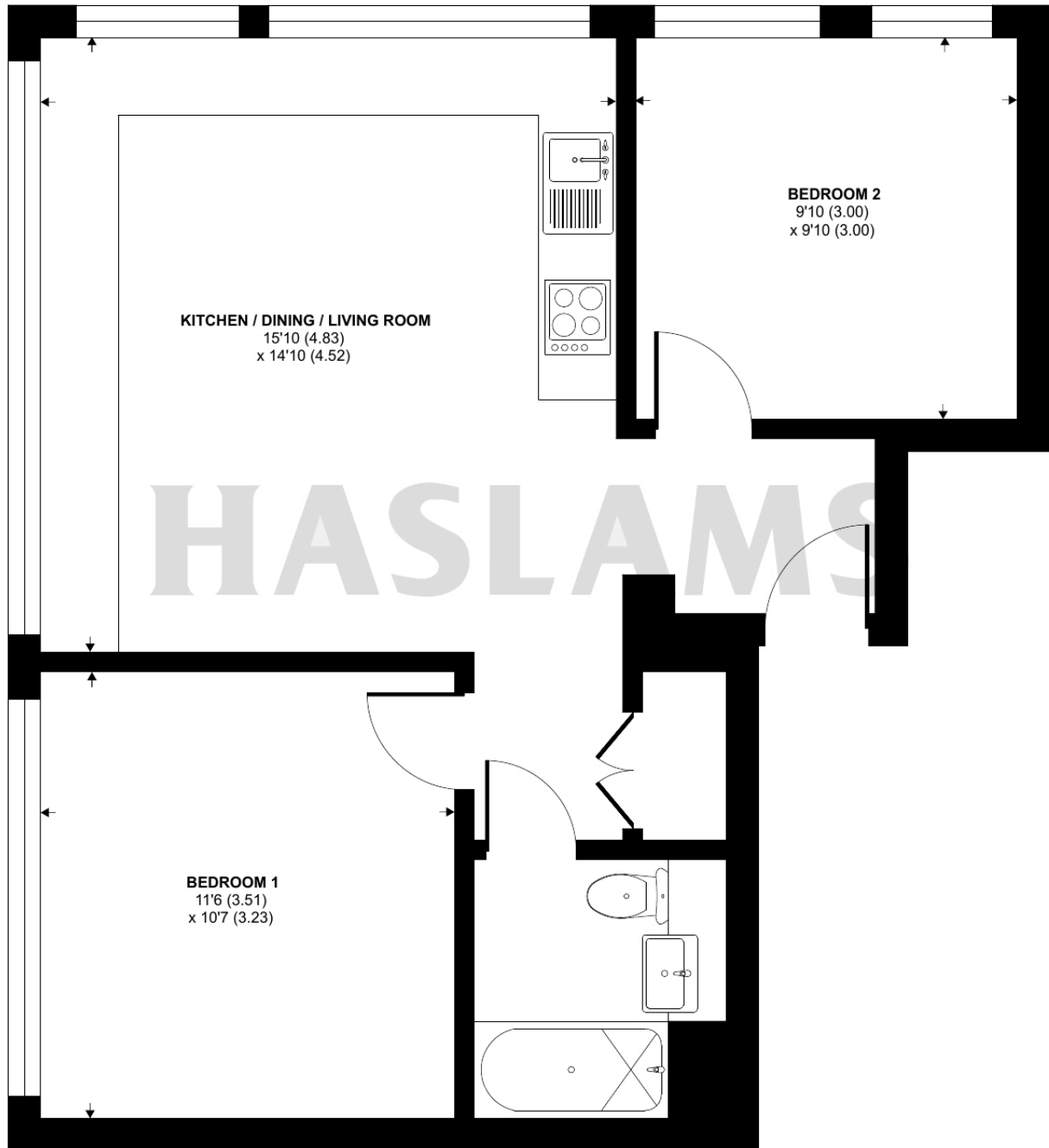




## Kings Road, Reading, RG1

Approximate Area = 585 sq ft / 54.3 sq m

For identification only - Not to scale



**FIRST FLOOR**



Floor plan produced in accordance with RICS Property Measurement Standards incorporating International Property Measurement Standards (IPMS2 Residential). © n1cheom 2024. Produced for Haslamss. REF: 1170087