

Property ref: 51775

Kennet House, Reading, RG1 3BJ

£1,750 PCM

HASLAMs
Lettings



A modern two bed split level apartment overlooking the River Kennet, within walking distance of the Oracle shopping centre and Reading mainline station.

Reading Borough Council Tax Band D.

Water supply: Mains

Drainage info: Mains

Electricity supply: Mains

Broadband/Mobile Info: Connections available. For an indication of specific speeds and supply of Broadband and Mobile, we advise applicants go to the Ofcom website Broadband and Mobile Coverage Checker.

- Two double bedrooms; master with ensuite
- Fitted kitchen with built-in appliances
- Modern bathroom with shower over the bath
- Electric heating; EPC Rating C
- Allocated parking
- Furnished; Managed by HASLAMs

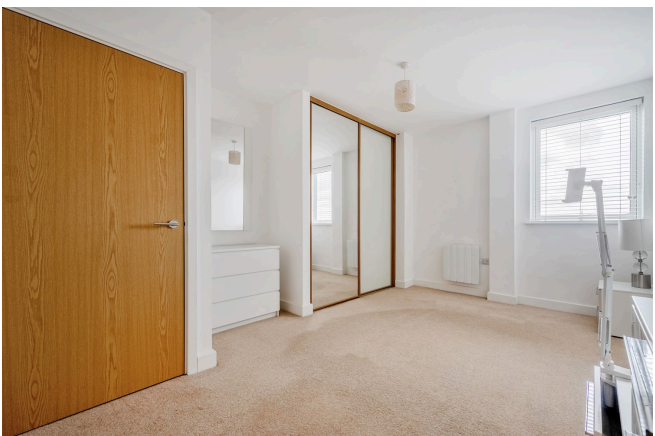
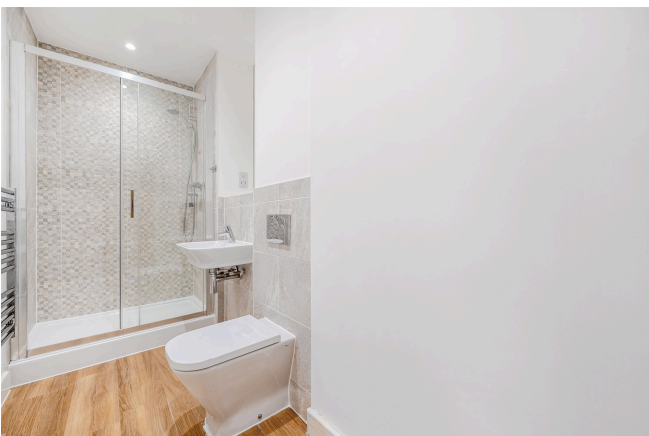
Available Now

*Fees For Assured Shorthold Tenancies: when you rent a property from us you will be required to pay a sum equivalent to one weeks' rent for a holding deposit. Upon successful application, this amount will be off set against your first months' rent. You will also be required to pay a security deposit equivalent to 5 weeks' rent which will be held and protected in line with Deposit legislation. For more information about our fees please visit: www.haslamss.net
Fees for all other tenancies (Non Housing Act Tenancies / Company Lets): when you rent a property from us we will charge you a one-off fee per property. This charge is the equivalent of 15 days of the monthly rental charge (+VAT) with a minimum fee of £450 (inc.VAT) up to a maximum of £650 (inc.VAT). Other fees may apply depending on your circumstances.

0118 960 1055

lettings@haslamss.net www.haslamss.net

Haslamss Estate Agents Ltd, 159 Friar Street, Reading, Berkshire, RG1 1HE

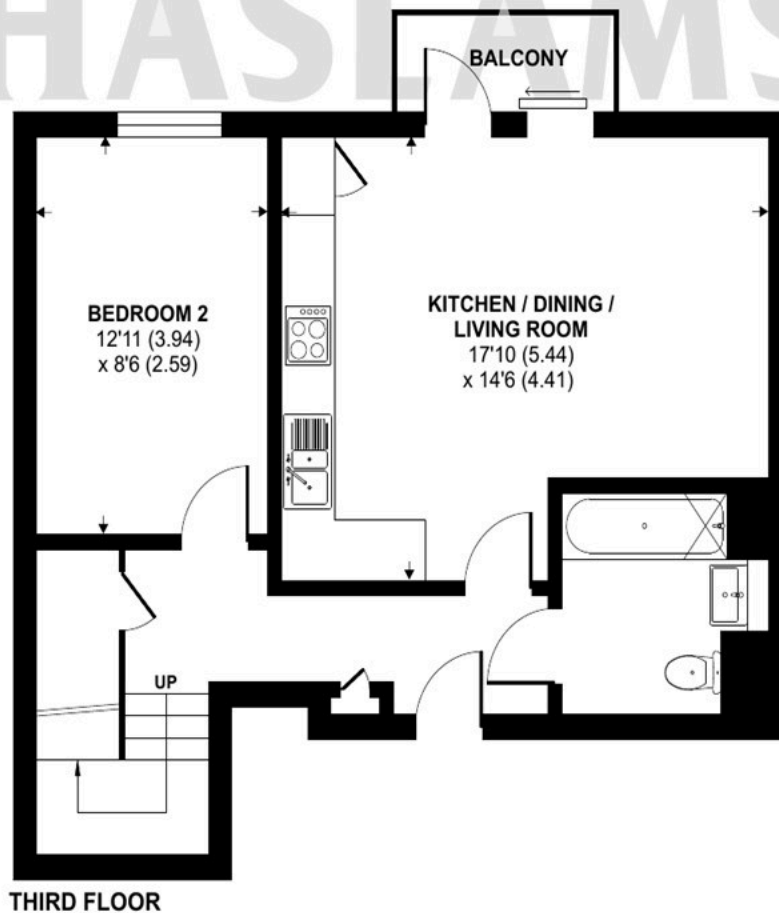
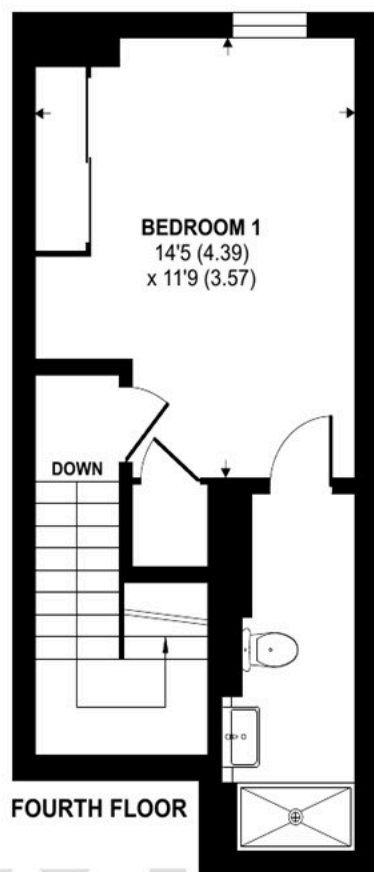




Kings Road, Reading, RG1

Approximate Area = 818 sq ft / 75.9 sq m

For identification only - Not to scale



Floor plan produced in accordance with RICS Property Measurement 2nd Edition, Incorporating International Property Measurement Standards (IPMS2 Residential). © nichecom 2025. Produced for Haslamss. REF: 1305447