

Property ref: 157598

## Carraway Street, Reading, RG1 3GQ

**£1,500 PCM**

**HASLAM'S**  
Lettings



A modern one bedroom, top floor apartment located in Reading town centre built by Berkley Homes.

Reading Borough Council Tax Band C.

Water supply: Mains

Drainage info: Mains

Electricity supply: Mains

Broadband/Mobile Info: Connections available. For an indication of specific speeds and supply of Broadband and Mobile, we advise applicants go to the Ofcom website 'Broadband and Mobile Coverage Checker'.

### Available Now

- Double bedroom with fitted wardrobes; Furnished
- Fully fitted kitchen with appliances; No parking
- Private balcony; Hot water and heating via communal boiler
- Bathroom with shower over the bath
- EPC Rating B; Managed by LANDLORD

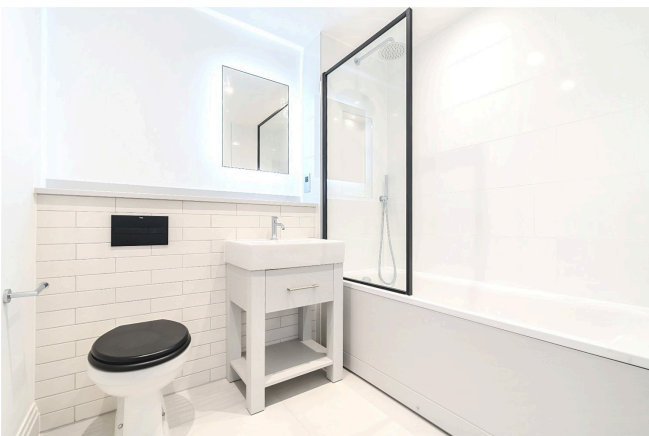
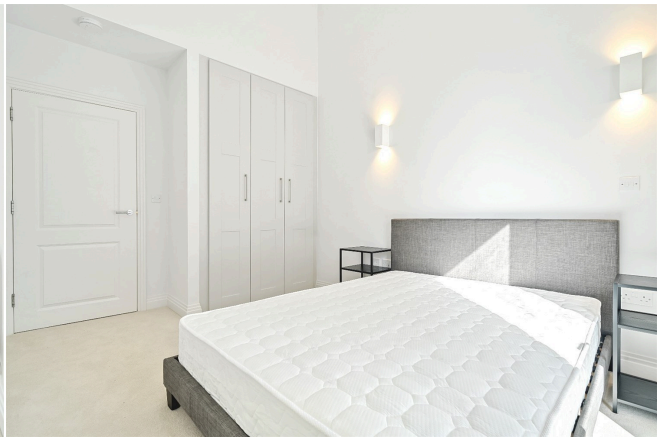
\*Fees For Assured Shorthold Tenancies: when you rent a property from us you will be required to pay a sum equivalent to one weeks' rent for a holding deposit. Upon successful application, this amount will be off set against your first months' rent. You will also be required to pay a security deposit equivalent to 5 weeks' rent which will be held and protected in line with Deposit legislation. For more information about our fees please visit: [www.haslams.net](http://www.haslams.net)  
Fees for all other tenancies (Non Housing Act Tenancies / Company Lets): when you rent a property from us we will charge you a one-off fee per property. This charge is the equivalent of 15 days of the monthly rental charge (+VAT) with a minimum fee of £450 (inc.VAT) up to a maximum of £650 (inc.VAT). Other fees may apply depending on your circumstances.

**0118 960 1055**

**[lettings@haslams.net](mailto:lettings@haslams.net) [www.haslams.net](http://www.haslams.net)**

**Haslams Estate Agents Ltd, 159 Friar Street, Reading, Berkshire, RG1 1HE**



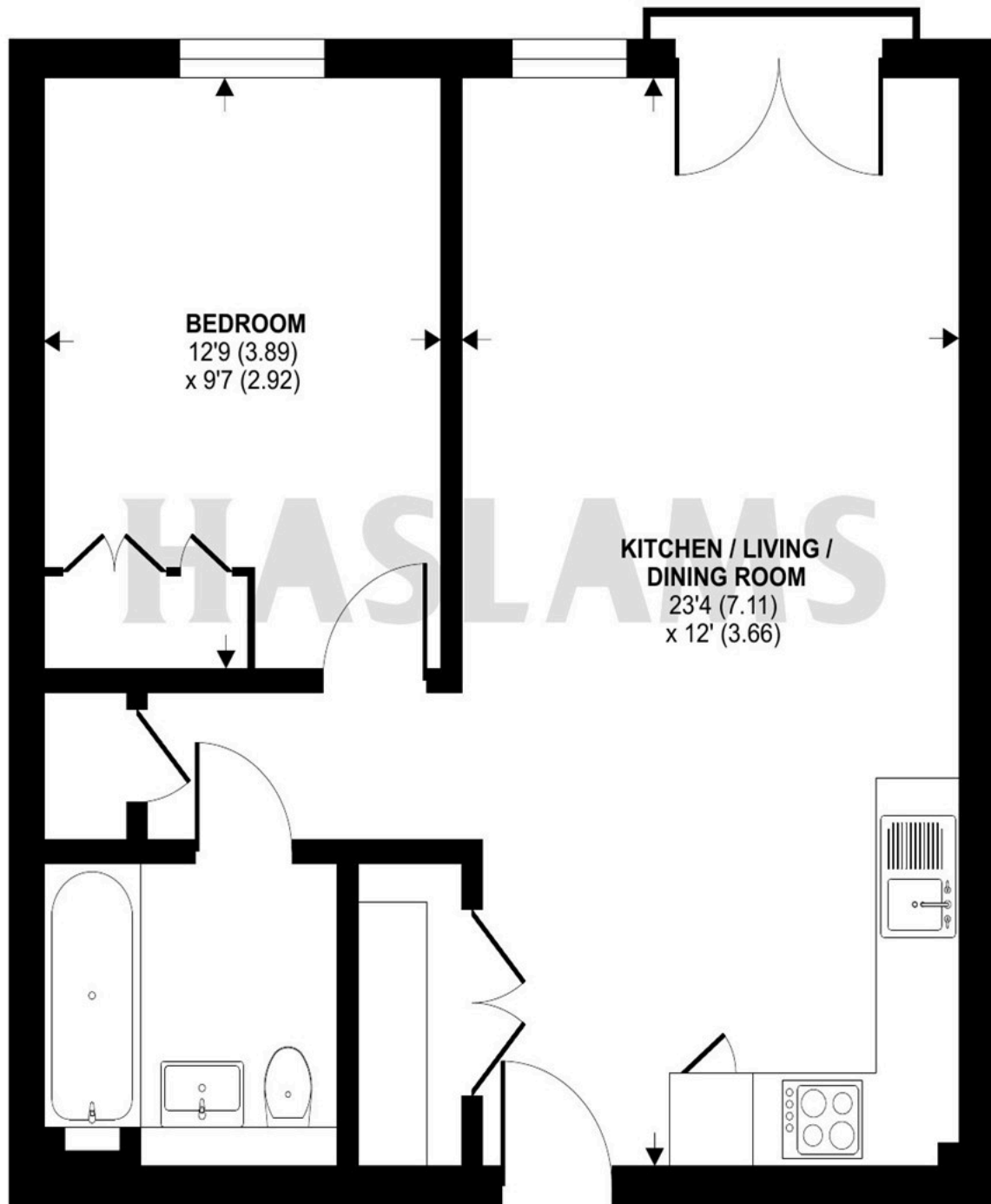




# Carraway Street, Reading, RG1

Approximate Area = 517 sq ft / 48 sq m

For identification only - Not to scale



TOP FLOOR



Floor plan produced in accordance with RICS Property Measurement Standards incorporating International Property Measurement Standards (IPMS2 Residential). © n1checom 2023. Produced for Haslam's. REF: 1042573