

Property ref: 157390

Kennet Walk, Reading, RG1 3GG

£1,600 PCM

HASLAM'S
Lettings



A huge split level apartment located just a short walk to Reading town centre. This stunning property benefits from two double bedrooms, two modern bathrooms, a kitchen with all appliances and has recently been redecorated throughout. The balcony boasts views of the River Kennet and the apartment is conveniently only a 10 minute walk from Reading train station.

Reading Borough Council Tax Band E.

Available 27/06/2025

- Two double bedrooms
- Two bathrooms with a further WC downstairs
- Town centre location; Private balcony
- Allocated parking; River views
- Unfurnished; Electric heating
- EPC rating C; Managed by LANDLORD

*Fees For Assured Shorthold Tenancies: when you rent a property from us you will be required to pay a sum equivalent to one weeks' rent for a holding deposit. Upon successful application, this amount will be off set against your first months' rent. You will also be required to pay a security deposit equivalent to 5 weeks' rent which will be held and protected in line with Deposit legislation. For more information about our fees please visit: www.haslams.net
Fees for all other tenancies (Non Housing Act Tenancies / Company Lets): when you rent a property from us we will charge you a one-off fee per property. This charge is the equivalent of 15 days of the monthly rental charge (+VAT) with a minimum fee of £450 (inc.VAT) up to a maximum of £650 (inc.VAT). Other fees may apply depending on your circumstances.

0118 960 1055

lettings@haslams.net www.haslams.net

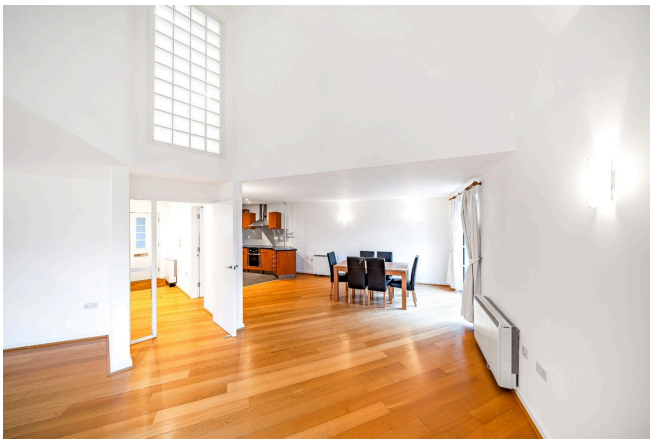
Haslams Estate Agents Ltd, 159 Friar Street, Reading, Berkshire, RG1 1HE

Water supply: Mains

Drainage info: Mains

Electricity supply: Mains

Broadband/Mobile Info: Connections available. For an indication of specific speeds and supply of Broadband and Mobile, we advise applicants go to the Ofcom website Broadband and Mobile Coverage Checker.





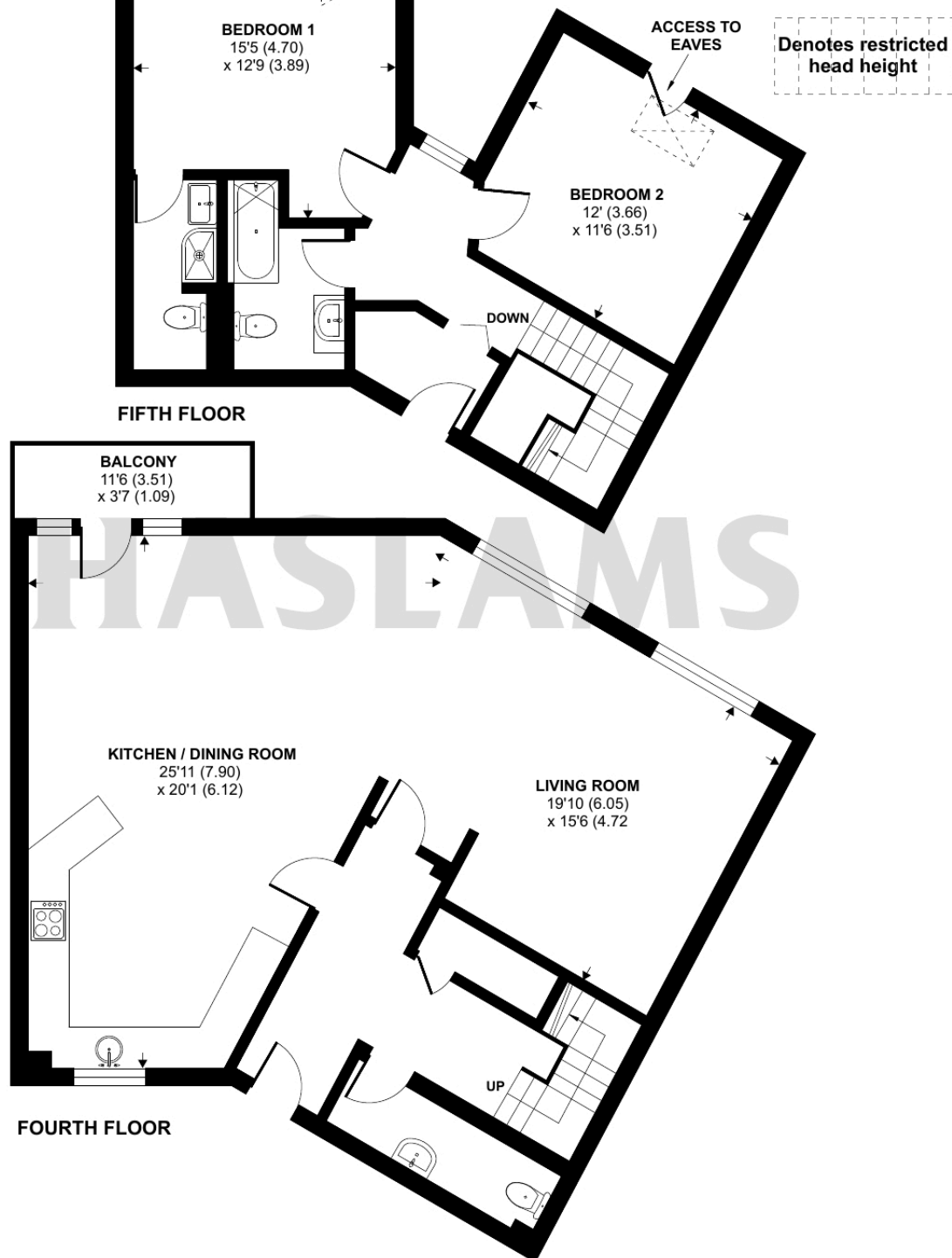
Kennet Walk, Reading, RG1

Approximate Area = 1407 sq ft / 130.7 sq m

Limited Use Area(s) = 15 sq ft / 1.3 sq m

Total = 1422 sq ft / 132.1 sq m

For identification only - Not to scale



Floor plan produced in accordance with RICS Property Measurement Standards incorporating International Property Measurement Standards (IPMS2 Residential). © n1cheom 2023. Produced for Haslam's. REF: 1042851