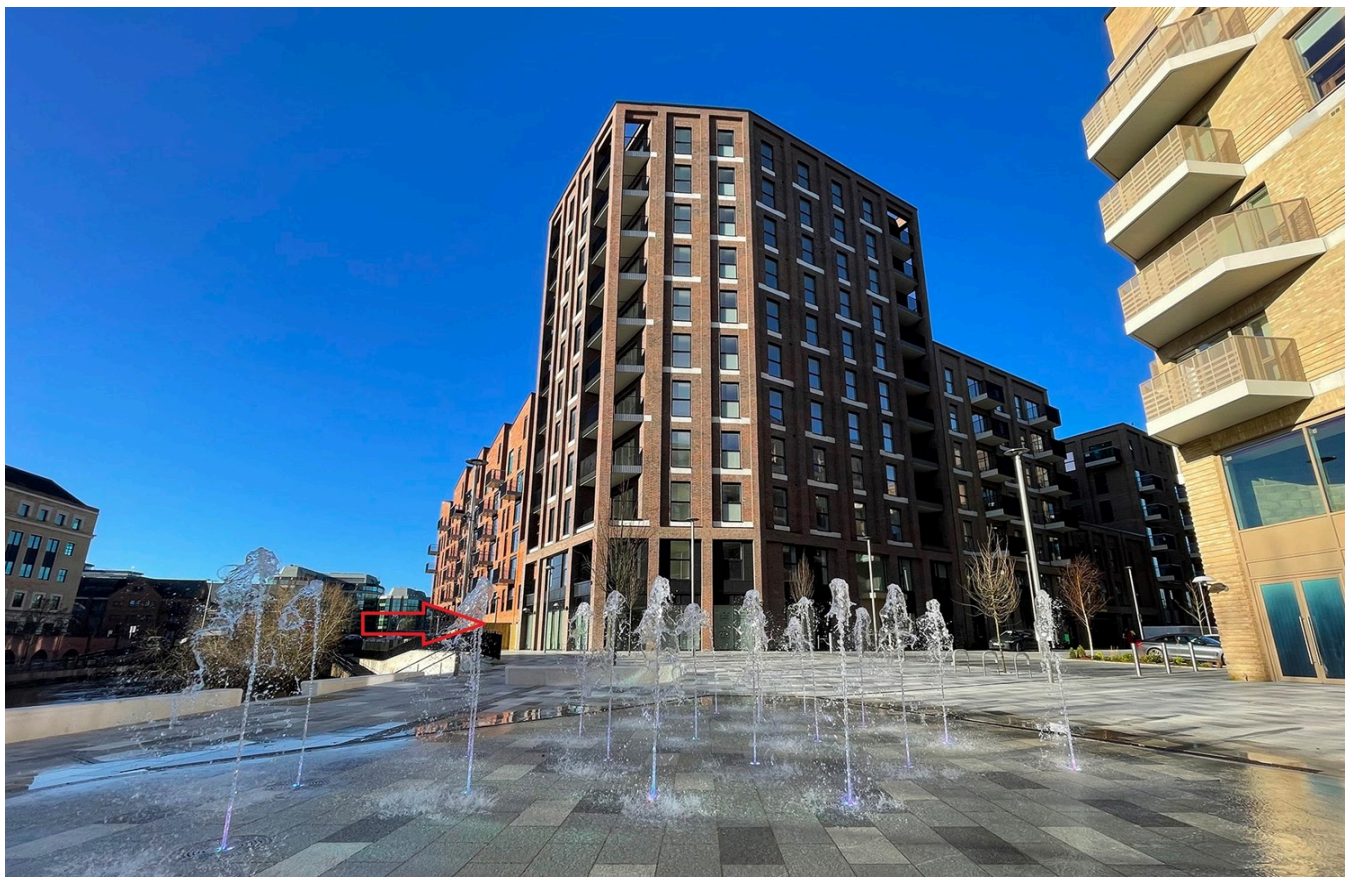


Property ref: 163904

Joseph Huntley Walk, Reading, RG1 3GW

£2,320 PCM

HASLAM'S
Lettings



Enjoy riverside living in The Foster design 3-bedroom duplex apartment with views of the internal Courtyard. The open-plan kitchen and living area combine modern design with practical functionality, creating the perfect space to entertain and relax. The location offers great connectivity to major cities including London and Birmingham via road and rail, plus access to the Huntley Wharf Concierge (open 12 hours a day, 7 days a week).

Reading Borough Council Tax Band E.

Available Now

- Three double bedroom duplex apartment; Three bathrooms
- Fully fitted kitchen with high quality appliances
- 6th floor position; Hot water and heating via communal boiler
- Furnished to an exceptional standard; EPC rating B
- Parking available for an additional £75 per month
- One month deposit; Managed by Touchstone

*Fees For Assured Shorthold Tenancies: when you rent a property from us you will be required to pay a sum equivalent to one weeks' rent for a holding deposit. Upon successful application, this amount will be off set against your first months' rent. You will also be required to pay a security deposit equivalent to 5 weeks' rent which will be held and protected in line with Deposit legislation. For more information about our fees please visit: www.haslams.net
Fees for all other tenancies (Non Housing Act Tenancies / Company Lets): when you rent a property from us we will charge you a one-off fee per property. This charge is the equivalent of 15 days of the monthly rental charge (+VAT) with a minimum fee of £450 (inc.VAT) up to a maximum of £650 (inc.VAT). Other fees may apply depending on your circumstances.

0118 960 1055

lettings@haslams.net www.haslams.net

Haslams Estate Agents Ltd, 159 Friar Street, Reading, Berkshire, RG1 1HE

Water supply: Mains

Drainage info: Mains

Electricity supply: Mains

Broadband/Mobile Info: Connections available. For an indication of specific speeds and supply of Broadband and Mobile, we advise applicants go to the Ofcom website Broadband and Mobile Coverage Checker.

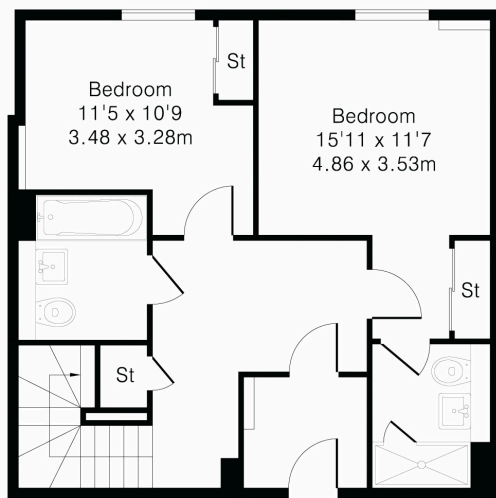


Foster

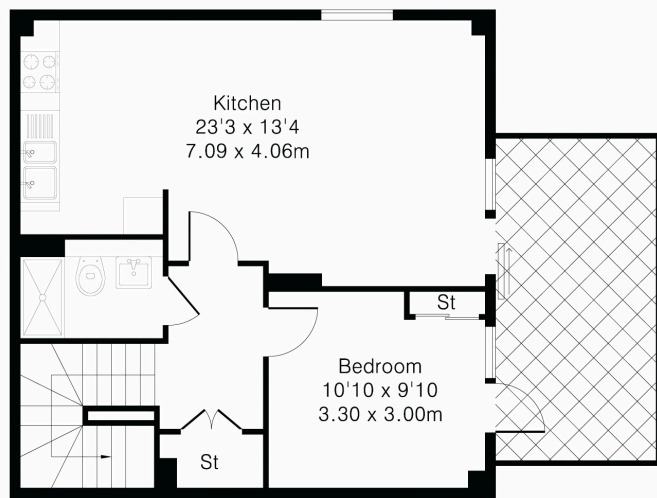
Approximate Gross Internal Area 1073 sq ft – 100 sq m

Ground Floor Area 540sq ft – 50 sq m

First Floor Area 533 sq ft – 50 sq m



Ground Floor



First Floor

