

Property ref: 50688

Kennet House, Reading, RG1 3BJ

£1,100 PCM

HASLAM'S
Lettings



A third floor studio apartment alongside the River Kennet within walking distance of the Oracle shopping complex and Reading mainline station.

Reading Borough Council Tax Band B.

Water supply: Mains

Drainage info: Mains

Electricity supply: Mains

Broadband/Mobile Info: Connections available. For an indication of specific speeds and supply of Broadband and Mobile, we advise applicants go to the Ofcom website Broadband and Mobile Coverage Checker.

- Generous living space
- Fully fitted kitchen with built in appliances
- Modern bathroom with shower over the bath
- Electric heating; EPC rating B; Total floor area approx 38m2 - floorplan to follow
- Views of the internal courtyard; No parking
- Furnished; Managed by HASLAM'S

Available 13/06/2025

*Fees For Assured Shorthold Tenancies: when you rent a property from us you will be required to pay a sum equivalent to one weeks' rent for a holding deposit. Upon successful application, this amount will be off set against your first months' rent. You will also be required to pay a security deposit equivalent to 5 weeks' rent which will be held and protected in line with Deposit legislation. For more information about our fees please visit: www.haslams.net
Fees for all other tenancies (Non Housing Act Tenancies / Company Lets): when you rent a property from us we will charge you a one-off fee per property. This charge is the equivalent of 15 days of the monthly rental charge (+VAT) with a minimum fee of £450 (inc.VAT) up to a maximum of £650 (inc.VAT). Other fees may apply depending on your circumstances.

0118 960 1055

lettings@haslams.net www.haslams.net

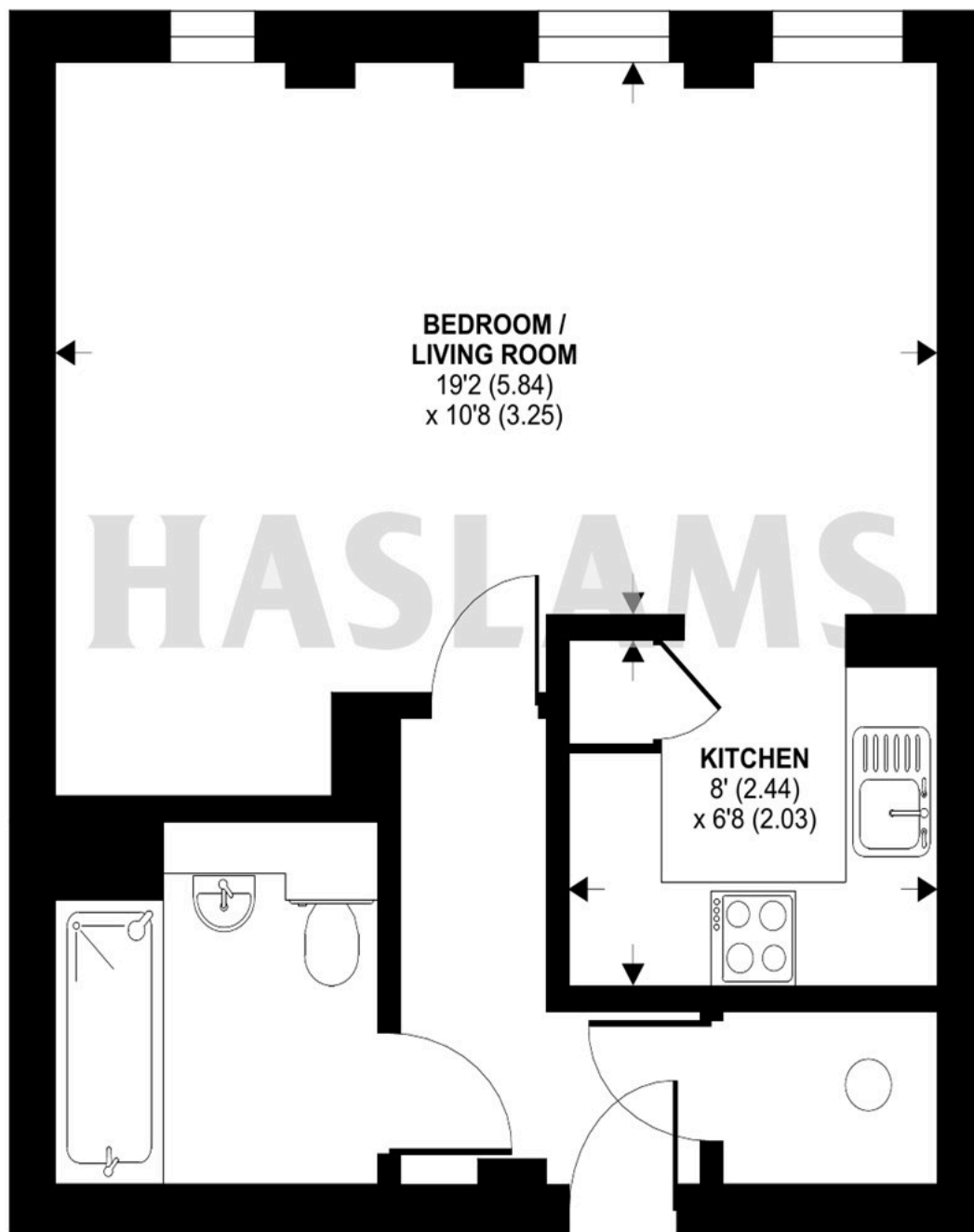
Haslams Estate Agents Ltd, 159 Friar Street, Reading, Berkshire, RG1 1HE



Kings Road, Reading, RG1

Approximate Area = 415 sq ft / 38.6 sq m

For identification only - Not to scale

**THIRD FLOOR**

Floor plan produced in accordance with RICS Property Measurement 2nd Edition, Incorporating International Property Measurement Standards (IPMS2 Residential). © nichecom 2025. Produced for Haslam's. REF: 1301449