

Property ref: 149588

## Amity Road, Reading, RG1 3LP

**£1,450 PCM**

**HASLAM'S**  
Lettings



A very well presented Victorian end of terrace home located within walking distance to Reading town centre and the mainline station. The property also benefits from driveway parking. Reading Borough Council Tax Band B.

**Available 30/06/2025**

- Three double bedrooms
- Family bathroom with shower over the bath
- Off road parking
- Gas central heating; EPC rating D
- Unfurnished
- Managed by HASLAM'S

\*Fees For Assured Shorthold Tenancies: when you rent a property from us you will be required to pay a sum equivalent to one weeks' rent for a holding deposit. Upon successful application, this amount will be off set against your first months' rent. You will also be required to pay a security deposit equivalent to 5 weeks' rent which will be held and protected in line with Deposit legislation. For more information about our fees please visit: [www.haslams.net](http://www.haslams.net)  
Fees for all other tenancies (Non Housing Act Tenancies / Company Lets): when you rent a property from us we will charge you a one-off fee per property. This charge is the equivalent of 15 days of the monthly rental charge (+VAT) with a minimum fee of £450 (inc.VAT) up to a maximum of £650 (inc.VAT). Other fees may apply depending on your circumstances.

**0118 960 1055**

**[lettings@haslams.net](mailto:lettings@haslams.net) [www.haslams.net](http://www.haslams.net)**

**Haslams Estate Agents Ltd, 159 Friar Street, Reading, Berkshire, RG1 1HE**

Water supply: Mains

Drainage info: Mains

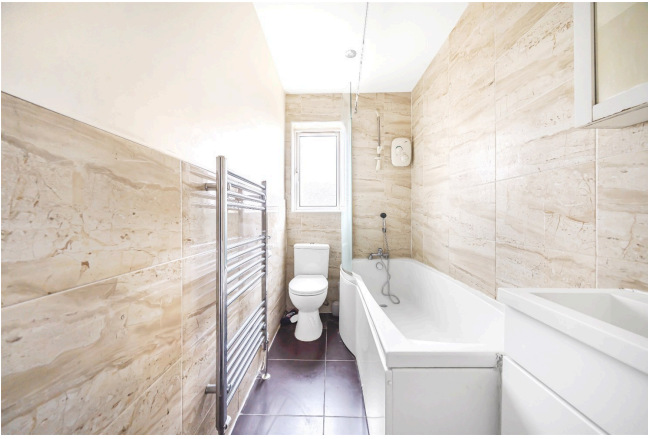
Electricity supply: Mains

Gas supply: Mains

Broadband/Mobile Info: Connections available. For an indication of specific speeds and supply of Broadband and Mobile, we advise applicants go to the Ofcom website Broadband and Mobile Coverage Checker.









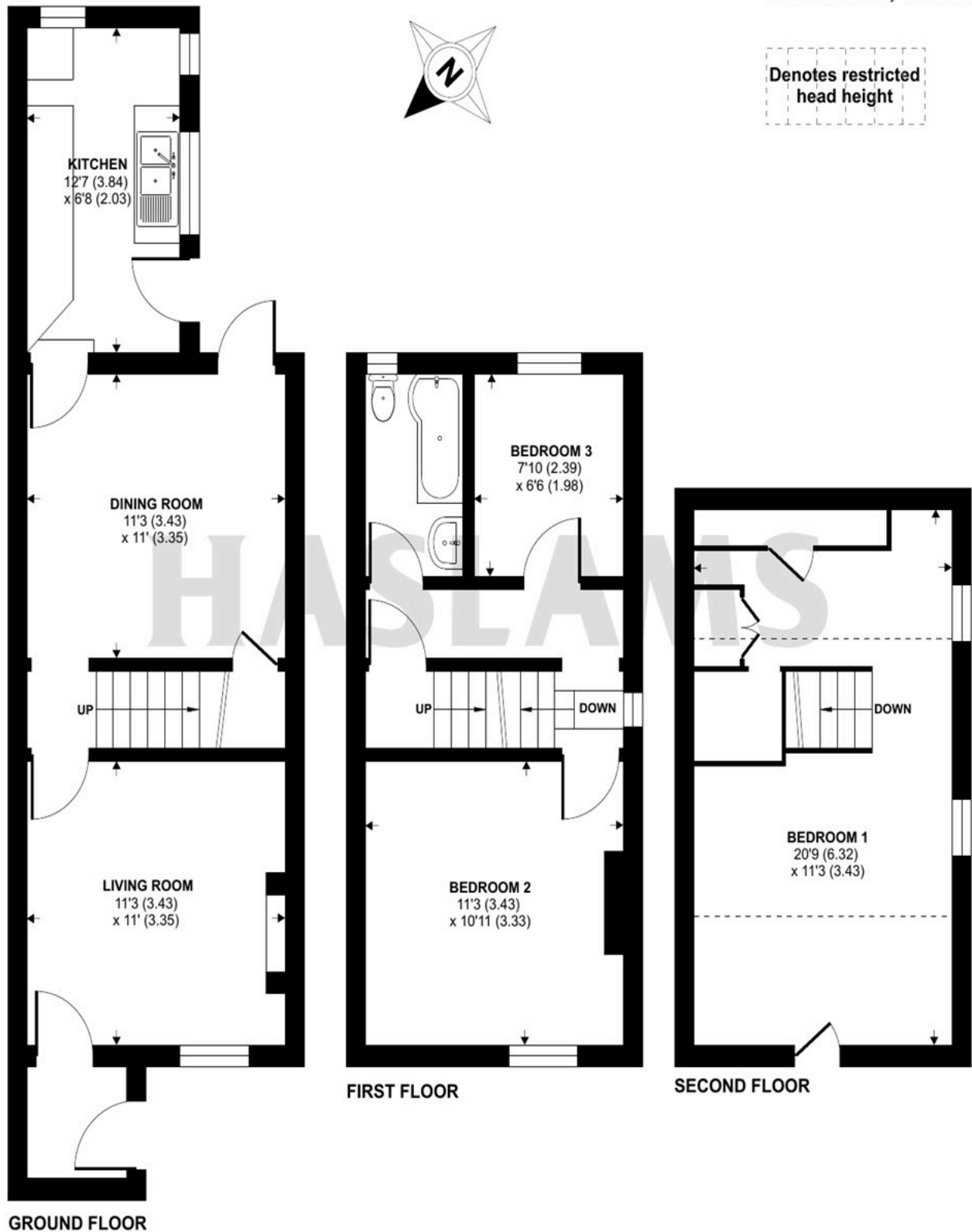
# Amity Street, Reading, RG1

Approximate Area = 818 sq ft / 76 sq m

Limited Use Area(s) = 112 sq ft / 10 sq m

Total = 930 sq ft / 86 sq m

For identification only - Not to scale



Floor plan produced in accordance with RICS Property Measurement Standards incorporating International Property Measurement Standards (IPMS2 Residential). © ntxcom 2022. Produced for Haslamss. REF: 933015