

Property ref: 83696

## Kings Reach, Reading, RG1 3FF

**£1,270 PCM****HASLAM'S**  
Lettings

A superbly built, one bedroom third floor apartment, situated in the impressive Kings Reach development in Reading town centre, just minutes from the mainline station, Oracle shopping centre and river walks.

Reading Borough Council tax band B.

Water supply: Mains

Drainage info: Mains

Electricity supply: Mains

Broadband/Mobile Info: Connections available. For an indication of specific speeds and supply of Broadband and Mobile, we advise applicants go to the Ofcom website Broadband and Mobile Coverage Checker.

- One bedroom apartment
- Fully fitted kitchen; Bathroom suite
- Furnished; No parking
- Central Reading location
- Electric heating; EPC rating C
- Managed by HASLAM'S

### Available 23/07/2025

\*Fees For Assured Shorthold Tenancies: when you rent a property from us you will be required to pay a sum equivalent to one weeks' rent for a holding deposit. Upon successful application, this amount will be off set against your first months' rent. You will also be required to pay a security deposit equivalent to 5 weeks' rent which will be held and protected in line with Deposit legislation. For more information about our fees please visit: [www.haslams.net](http://www.haslams.net)  
Fees for all other tenancies (Non Housing Act Tenancies / Company Lets): when you rent a property from us we will charge you a one-off fee per property. This charge is the equivalent of 15 days of the monthly rental charge (+VAT) with a minimum fee of £450 (inc.VAT) up to a maximum of £650 (inc.VAT). Other fees may apply depending on your circumstances.

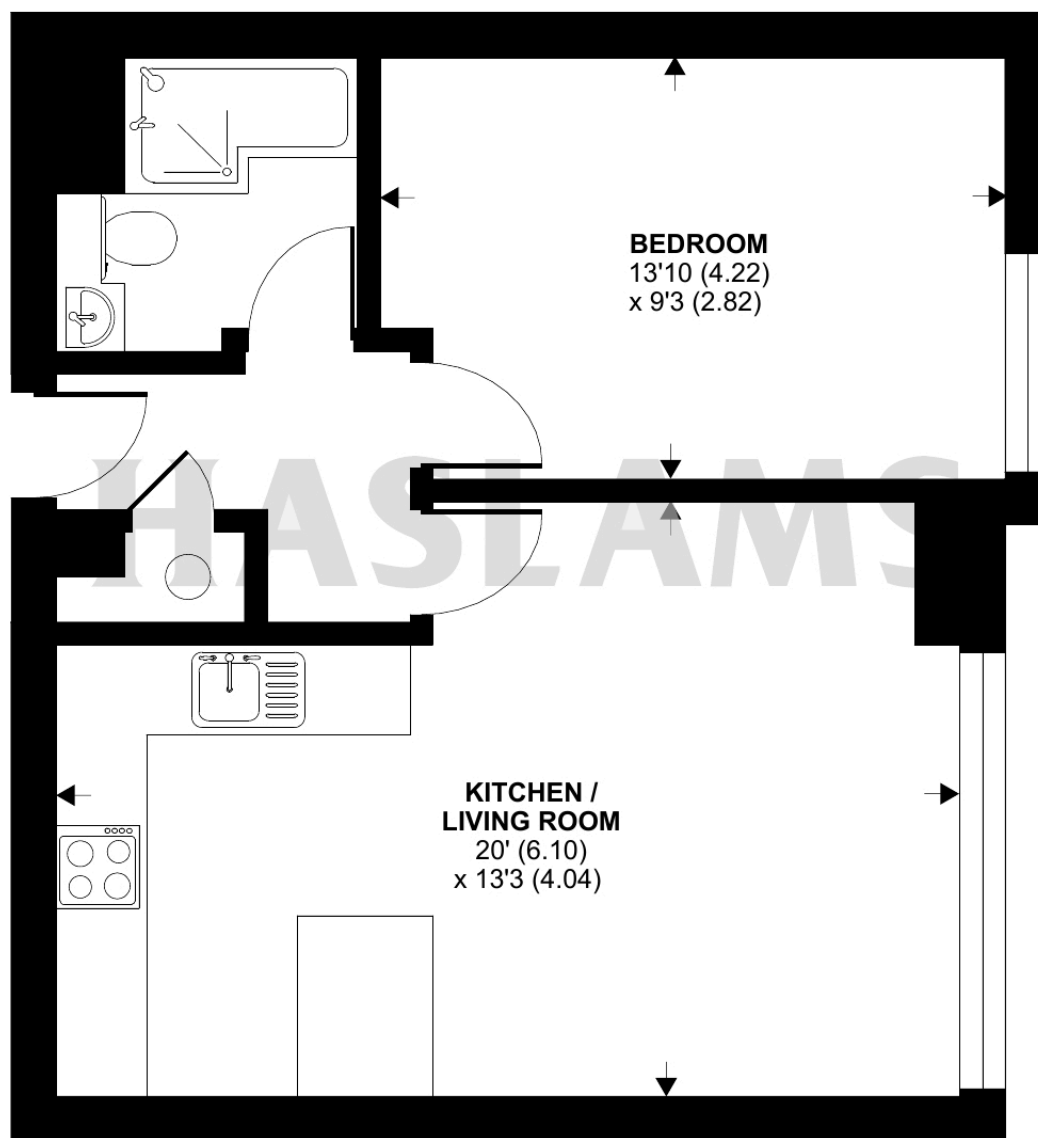
**0118 960 1055****[lettings@haslams.net](mailto:lettings@haslams.net) [www.haslams.net](http://www.haslams.net)****Haslams Estate Agents Ltd, 159 Friar Street, Reading, Berkshire, RG1 1HE**



## Kings Road, Reading, RG1

Approximate Area = 469 sq ft / 43.6 sq m

For identification only - Not to scale



**THIRD FLOOR**



Floor plan produced in accordance with RICS Property Measurement Standards incorporating International Property Measurement Standards (IPMS2 Residential). © n1cheom 2024. Produced for Haslamss. REF: 1108009