

Property ref: 159842

**Monarch Drive,  
Reading, RG2 9EW****£2,500 PCM****HASLAM'S**  
Lettings

A well presented spacious five bedroom detached family home situated in within Shinfield Village.

Wokingham Borough Council Tax Band F.

Water supply: Mains

Drainage info: Mains

Electricity supply: Mains

Gas supply: Mains

Broadband/Mobile Info: Connections available. For an indication of specific speeds and supply of Broadband and Mobile, we advise applicants go to the Ofcom website Broadband and Mobile Coverage Checker.

- Five double bedrooms; two with en-suites
- Fully fitted kitchen with appliances
- Family bathroom
- Off road parking plus a garage
- Gas central heating; EPC rating C
- Unfurnished; Managed by LANDLORD

**Available 08/08/2025**

\*Fees For Assured Shorthold Tenancies: when you rent a property from us you will be required to pay a sum equivalent to one weeks' rent for a holding deposit. Upon successful application, this amount will be off set against your first months' rent. You will also be required to pay a security deposit equivalent to 5 weeks' rent which will be held and protected in line with Deposit legislation. For more information about our fees please visit: [www.haslams.net](http://www.haslams.net)  
Fees for all other tenancies (Non Housing Act Tenancies / Company Lets): when you rent a property from us we will charge you a one-off fee per property. This charge is the equivalent of 15 days of the monthly rental charge (+VAT) with a minimum fee of £450 (inc.VAT) up to a maximum of £650 (inc.VAT). Other fees may apply depending on your circumstances.

**0118 960 1055****[lettings@haslams.net](mailto:lettings@haslams.net) [www.haslams.net](http://www.haslams.net)****Haslams Estate Agents Ltd, 159 Friar Street, Reading, Berkshire, RG1 1HE**





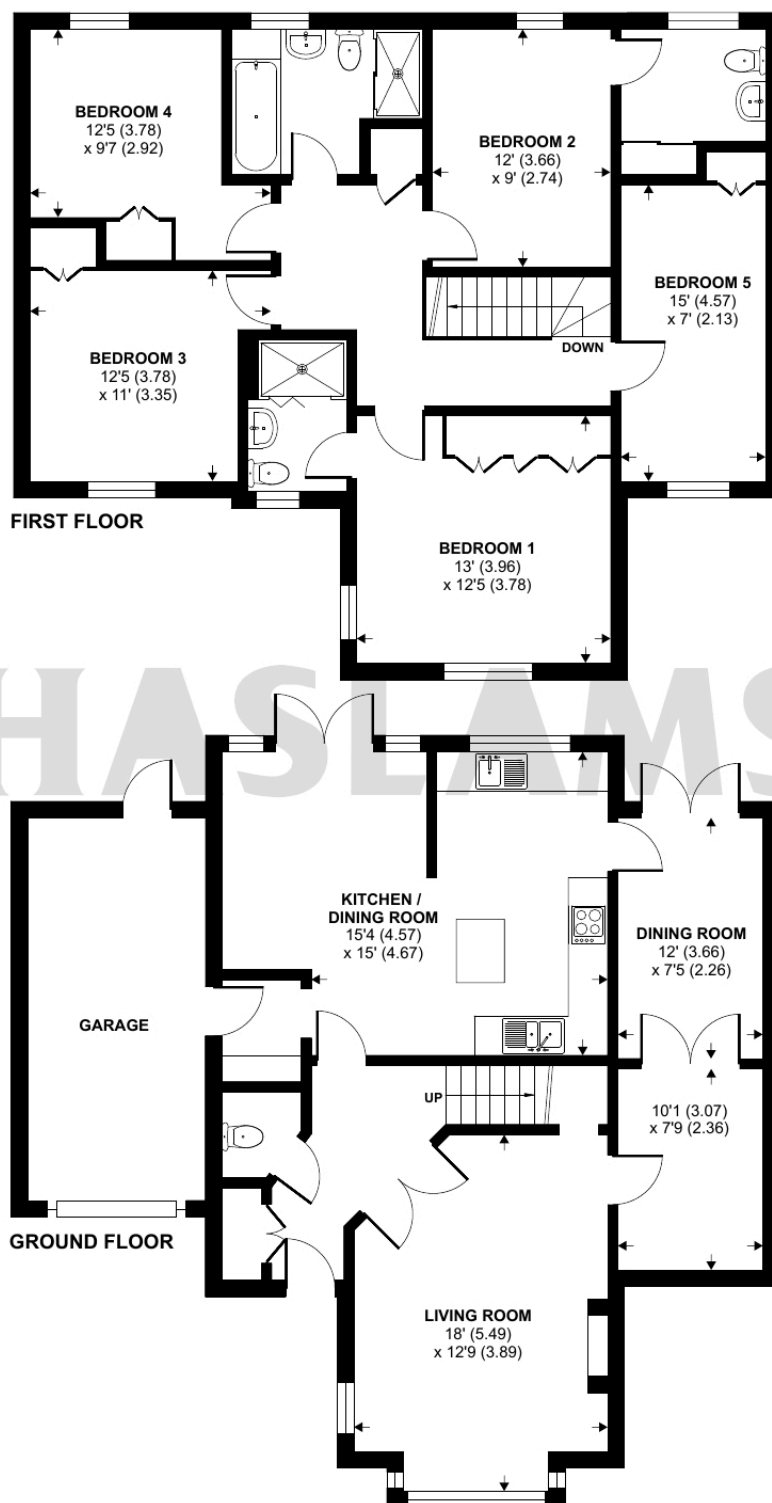




# Monarch Drive, Shinfield, Reading, RG2

Approximate Area = 1794 sq ft / 166.6 sq m (excludes garage)

For identification only - Not to scale



Floor plan produced in accordance with RICS Property Measurement Standards incorporating International Property Measurement Standards (IPMS2 Residential). © n1checom 2024. Produced for Haslam. REF: 1080605