

Property ref: 64986

The Picture House, Reading, RG1 7AJ

£1,600 PCM

HASLAM'S
Lettings



A well presented two bedroom, third floor apartment ideally situated for Reading's mainline station as well as the Oracle shopping centre. The property is offered beautifully furnished and benefits from allocated parking.
Reading Borough Council Tax Band D.

Available Now

- Two double bedrooms; one with built in wardrobes
- Fully fitted kitchen with appliances
- En-suite shower room plus a family bathroom
- Allocated parking; Communal gardens
- Gas central heating; EPC Rating D
- Furnished; Managed by HASLAM'S

*Fees For Assured Shorthold Tenancies: when you rent a property from us you will be required to pay a sum equivalent to one weeks' rent for a holding deposit. Upon successful application, this amount will be off set against your first months' rent. You will also be required to pay a security deposit equivalent to 5 weeks' rent which will be held and protected in line with Deposit legislation. For more information about our fees please visit: www.haslams.net
Fees for all other tenancies (Non Housing Act Tenancies / Company Lets): when you rent a property from us we will charge you a one-off fee per property. This charge is the equivalent of 15 days of the monthly rental charge (+VAT) with a minimum fee of £450 (inc.VAT) up to a maximum of £650 (inc.VAT). Other fees may apply depending on your circumstances.

0118 960 1055

lettings@haslams.net www.haslams.net

Haslams Estate Agents Ltd, 159 Friar Street, Reading, Berkshire, RG1 1HE

Water supply: Mains

Drainage info: Mains

Electricity supply: Mains

Gas supply: Mains

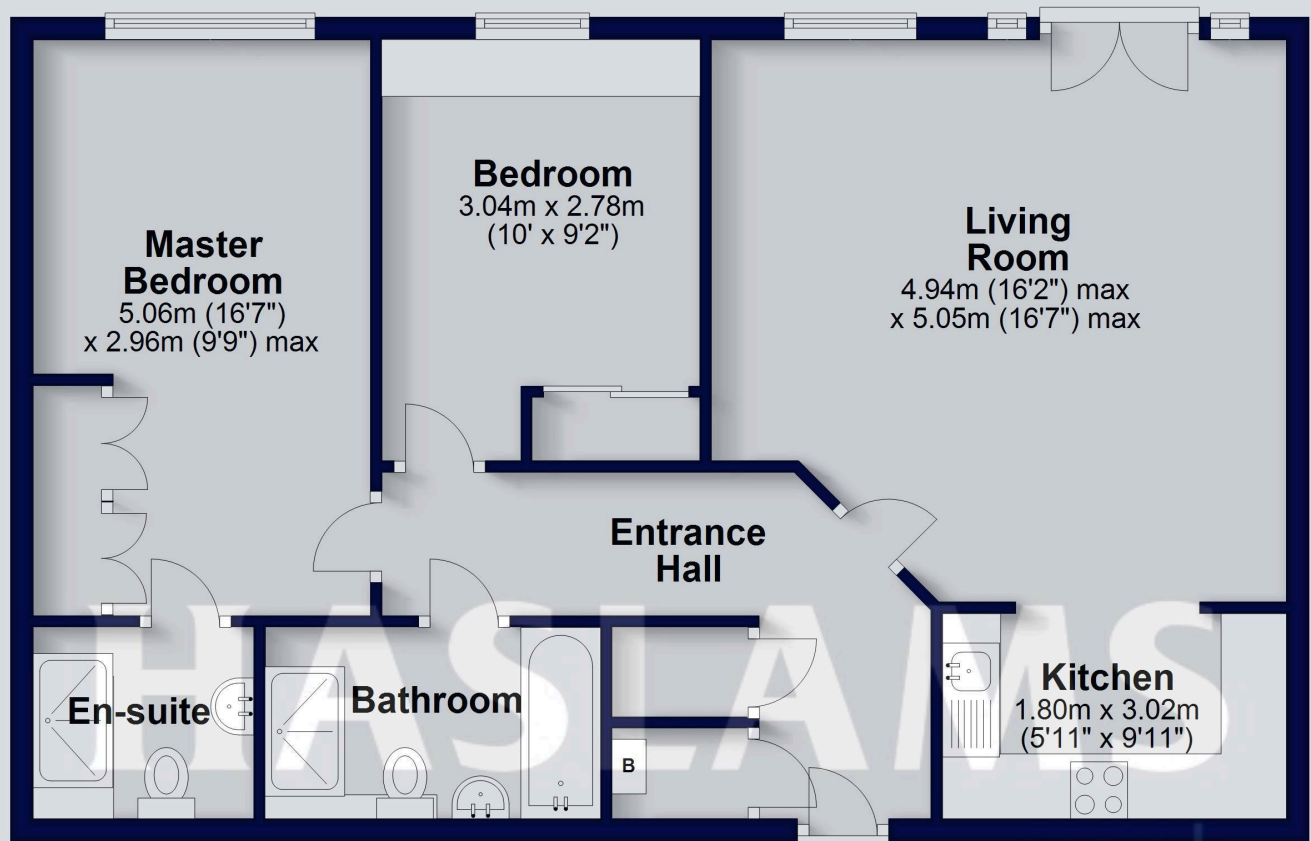
Broadband/Mobile Info: Connections available. For an indication of specific speeds and supply of Broadband and Mobile, we advise applicants go to the Ofcom website 'Broadband and Mobile Coverage Checker'.





Third Floor

Approx. 75.3 sq. metres (810.5 sq. feet)



Total area: approx. 75.3 sq. metres (810.5 sq. feet)

This floorplan is for illustrative purposes only and is not to scale. The total area includes all the areas shown.

Plan produced using PlanUp.