

Property ref: 7341

Alexandra House, Reading, RG1 4EJ

£1,500 PCM

HASLAM'S
Lettings



A rarely available, high specification apartment situated within a period conversion located only a short walk from Reading town centre. Reading Borough Council tax band D.

Water supply: Mains

Drainage info: Mains

Electricity supply: Mains

Gas supply: Mains

Broadband/Mobile Info: Connections available. For an indication of specific speeds and supply of Broadband and Mobile, we advise applicants go to the Ofcom website 'Broadband and Mobile Coverage Checker'.

Available 22/07/2025

- Two double bedrooms
- Open-plan living/dining room; New flooring throughout the kitchen and living areas
- Kitchen complete with built-in appliances
- Secure allocated parking; Located in the Eldon Square conservation area
- New boiler recently installed; Gas central heating; EPC Rating D
- Unfurnished; Managed by HASLAM'S

*Fees For Assured Shorthold Tenancies: when you rent a property from us you will be required to pay a sum equivalent to one weeks' rent for a holding deposit. Upon successful application, this amount will be off set against your first months' rent. You will also be required to pay a security deposit equivalent to 5 weeks' rent which will be held and protected in line with Deposit legislation. For more information about our fees please visit: www.haslams.net
Fees for all other tenancies (Non Housing Act Tenancies / Company Lets): when you rent a property from us we will charge you a one-off fee per property. This charge is the equivalent of 15 days of the monthly rental charge (+VAT) with a minimum fee of £450 (inc.VAT) up to a maximum of £650 (inc.VAT). Other fees may apply depending on your circumstances.

0118 960 1055

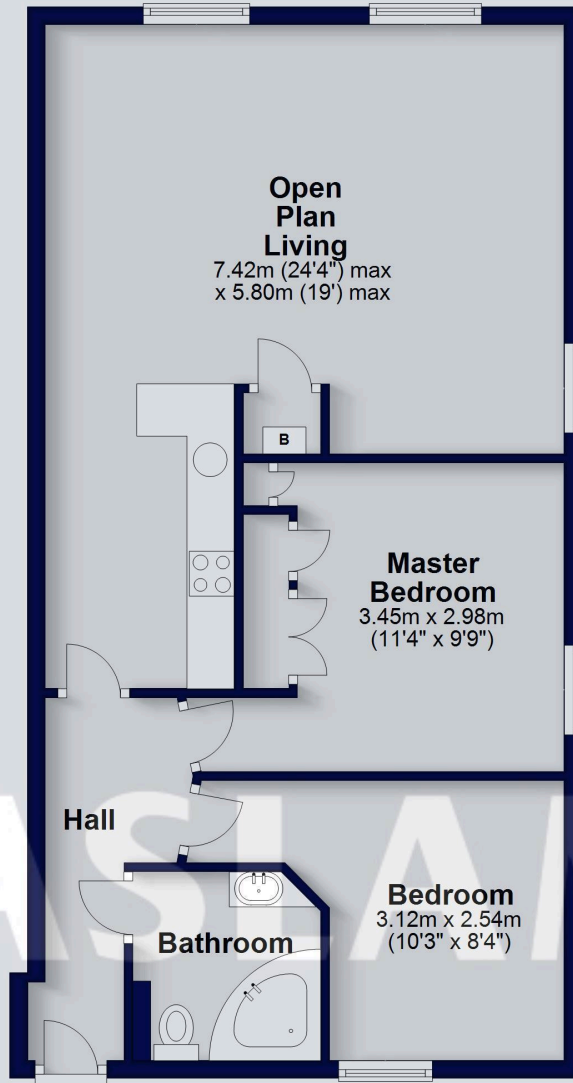
lettings@haslams.net www.haslams.net

Haslams Estate Agents Ltd, 159 Friar Street, Reading, Berkshire, RG1 1HE



First Floor

Approx. 67.3 sq. metres (724.3 sq. feet)

**Total area: approx. 67.3 sq. metres (724.3 sq. feet)**

This floorplan is for illustrative purposes only and is not to scale. The total area includes all the areas shown.
Plan produced using PlanUp.