

Property ref: 153923

School Road, Reading, RG31 5AW

£1,150 PCM

HASLAM'S
Lettings



A very well presented one bedroom first floor apartment which has been completely refurbished, situated in Tilehurst Village which is close to all local amenities and bus routes.

Reading Borough Council Tax Band B.

Water supply: Mains

Drainage info: Mains

Electricity supply: Mains

Broadband/Mobile Info: Connections available. For an indication of specific speeds and supply of Broadband and Mobile, we advise applicants go to the Ofcom website Broadband and Mobile Coverage Checker.

- One double bedroom
- Fully fitted kitchen with appliances
- Bathroom with shower over the bath
- Off road parking; Electric heating
- EPC rating D
- Furnished; Managed by LANDLORD

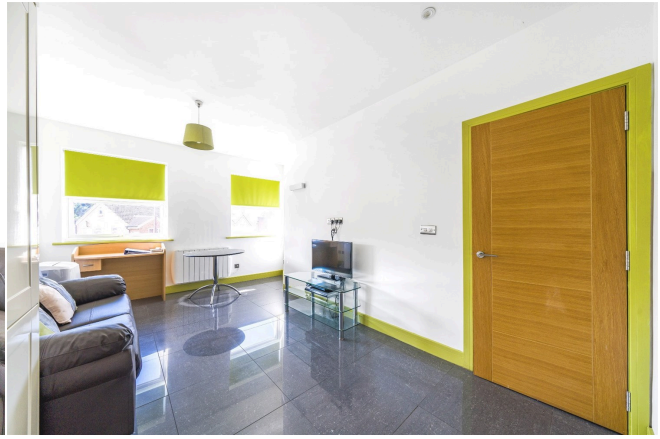
Available 08/07/2025

*Fees For Assured Shorthold Tenancies: when you rent a property from us you will be required to pay a sum equivalent to one weeks' rent for a holding deposit. Upon successful application, this amount will be off set against your first months' rent. You will also be required to pay a security deposit equivalent to 5 weeks' rent which will be held and protected in line with Deposit legislation. For more information about our fees please visit: www.haslams.net
Fees for all other tenancies (Non Housing Act Tenancies / Company Lets): when you rent a property from us we will charge you a one-off fee per property. This charge is the equivalent of 15 days of the monthly rental charge (+VAT) with a minimum fee of £450 (inc.VAT) up to a maximum of £650 (inc.VAT). Other fees may apply depending on your circumstances.

0118 960 1055

lettings@haslams.net www.haslams.net

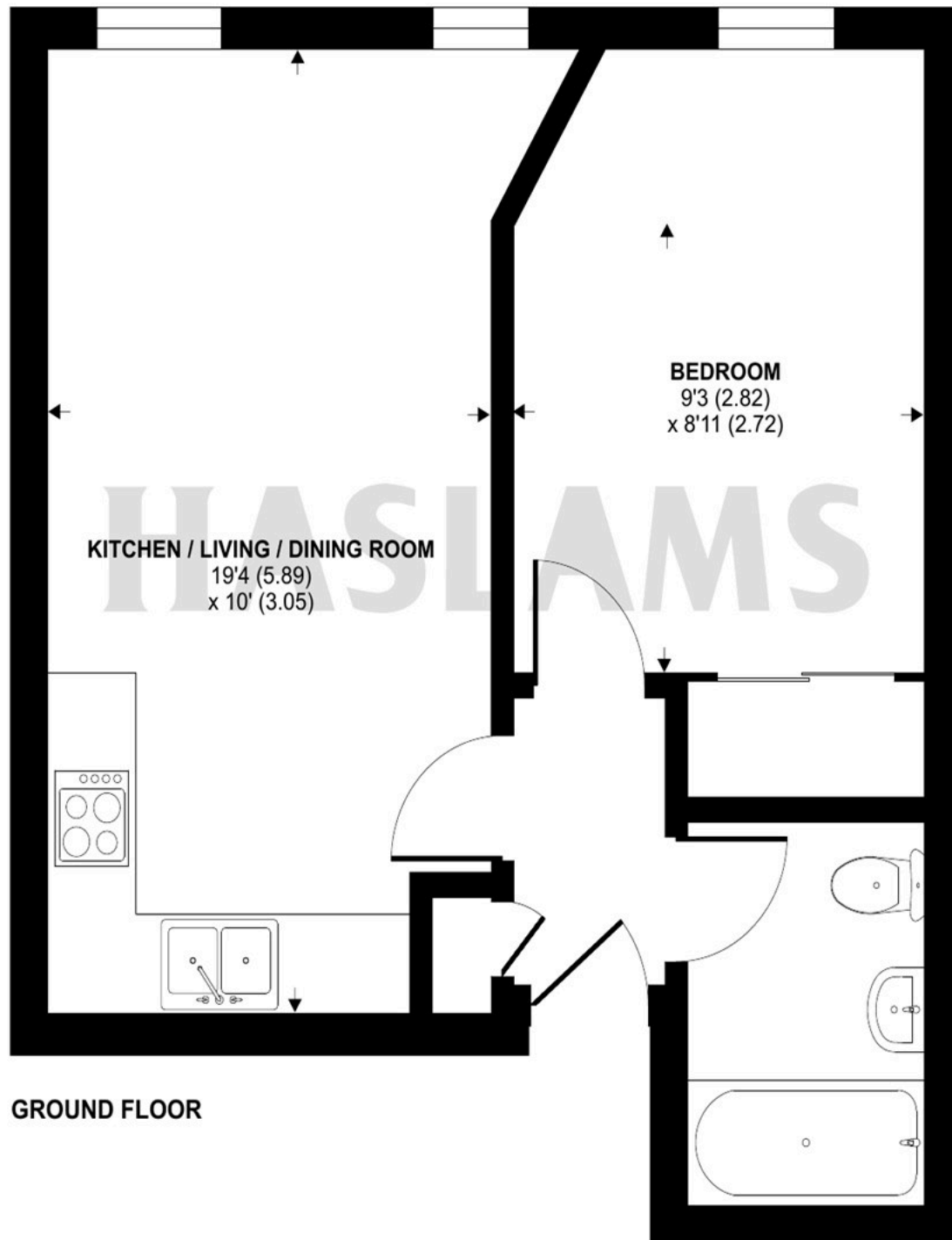
Haslams Estate Agents Ltd, 159 Friar Street, Reading, Berkshire, RG1 1HE



School Road, Tilehurst, Reading, RG31

Approximate Area = 400 sq ft / 37.1 sq m

For identification only - Not to scale

**GROUND FLOOR**

Floor plan produced in accordance with RICS Property Measurement Standards incorporating International Property Measurement Standards (IPMS2 Residential). © ntxcom 2023. Produced for Haslams. REF: 988771