

Property ref: 166092

Prospect Mews, Reading, RG1 7NN

£1,050 PCM

HASLAM'S
Lettings



A top floor one bedroom apartment located just a short walk from both Reading West and Mainline station as well as the Oracle shopping centre. The property benefits from an open plan living/kitchen area finished to an exceptional standard and a delightfully modern bathroom. The apartment is available unfurnished and comes with one allocated parking space.

Reading Borough Council Tax Band B.

Available 17/06/2025

- Top floor one bedroom apartment
- Modern kitchen and bathroom
- Unfurnished; Allocated parking
- Short walk to Reading town centre
- Gas central heating; EPC rating B
- Managed by LANDLORD

*Fees For Assured Shorthold Tenancies: when you rent a property from us you will be required to pay a sum equivalent to one weeks' rent for a holding deposit. Upon successful application, this amount will be off set against your first months' rent. You will also be required to pay a security deposit equivalent to 5 weeks' rent which will be held and protected in line with Deposit legislation. For more information about our fees please visit: www.haslams.net
Fees for all other tenancies (Non Housing Act Tenancies / Company Lets): when you rent a property from us we will charge you a one-off fee per property. This charge is the equivalent of 15 days of the monthly rental charge (+VAT) with a minimum fee of £450 (inc.VAT) up to a maximum of £650 (inc.VAT). Other fees may apply depending on your circumstances.

0118 960 1055

lettings@haslams.net www.haslams.net

Haslams Estate Agents Ltd, 159 Friar Street, Reading, Berkshire, RG1 1HE

Water supply: Mains

Drainage info: Mains

Electricity supply: Mains

Gas supply: Mains

Broadband/Mobile Info: Connections available. For an indication of specific speeds and supply of Broadband and Mobile, we advise applicants go to the Ofcom website 'Broadband and Mobile Coverage Checker'.



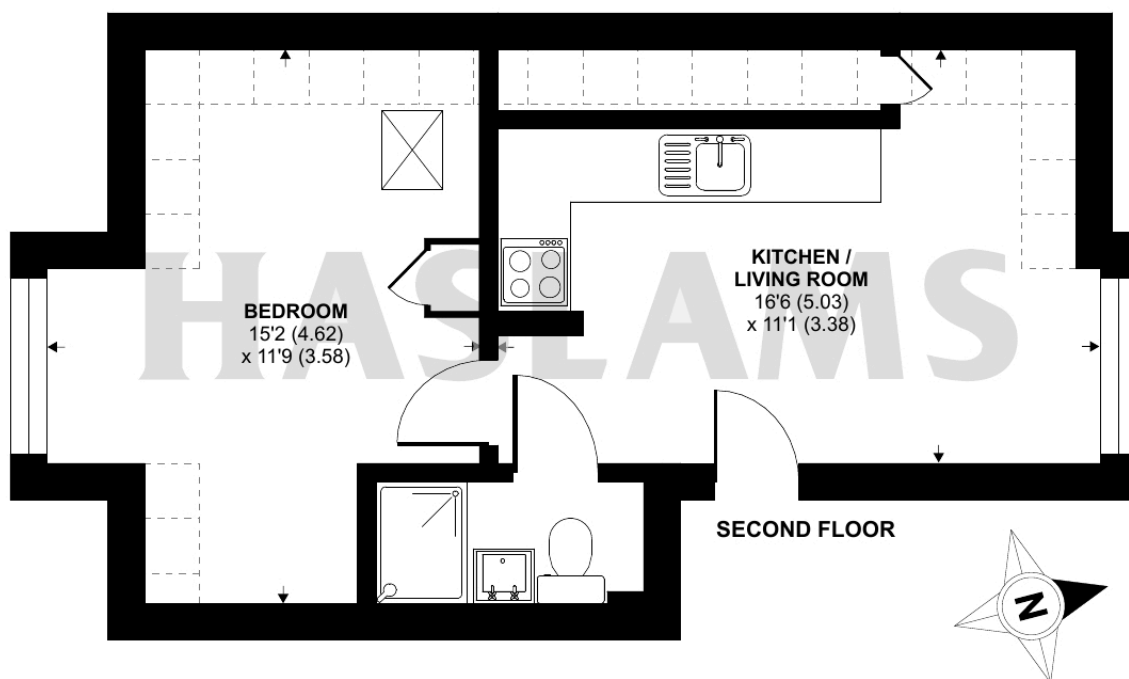
Prospect Mews, Reading, RG1

Approximate Area = 301 sq ft / 28 sq m

Limited Use Area(s) = 56 sq ft / 5.2 sq m

Total = 357 sq ft / 33.2 sq m

For identification only - Not to scale



Floor plan produced in accordance with RICS Property Measurement Standards incorporating International Property Measurement Standards (IPMS2 Residential). © n1cheom 2024. Produced for Haslam's. REF: 1190628