

Property ref: 90827

Harlequin House, Reading, RG2 0FU

£1,500 PCM**HASLAM'S**
Lettings

A modern two bedroom first floor apartment located in the sought-after Kennet Island development. Within walking distance of Green Park, local amenities, bus routes into Reading town centre and with easy access to the M4 motorway.
Reading Borough Council Tax Band C.

Available 17/07/2025

- A spacious, dual aspect open plan living/kitchen area
- Two double bedrooms; Master with ensuite shower room
- Modern family sized bathroom; Allocated parking
- Furnished; Electric Heating; EPC rating C
- Easy access to central Reading via local bus routes
- Managed by HASLAM'S

*Fees For Assured Shorthold Tenancies: when you rent a property from us you will be required to pay a sum equivalent to one weeks' rent for a holding deposit. Upon successful application, this amount will be off set against your first months' rent. You will also be required to pay a security deposit equivalent to 5 weeks' rent which will be held and protected in line with Deposit legislation. For more information about our fees please visit: www.haslams.net
Fees for all other tenancies (Non Housing Act Tenancies / Company Lets): when you rent a property from us we will charge you a one-off fee per property. This charge is the equivalent of 15 days of the monthly rental charge (+VAT) with a minimum fee of £450 (inc.VAT) up to a maximum of £650 (inc.VAT). Other fees may apply depending on your circumstances.

0118 960 1055**lettings@haslams.net www.haslams.net****Haslams Estate Agents Ltd, 159 Friar Street, Reading, Berkshire, RG1 1HE**

Water supply: Mains

Drainage info: Mains

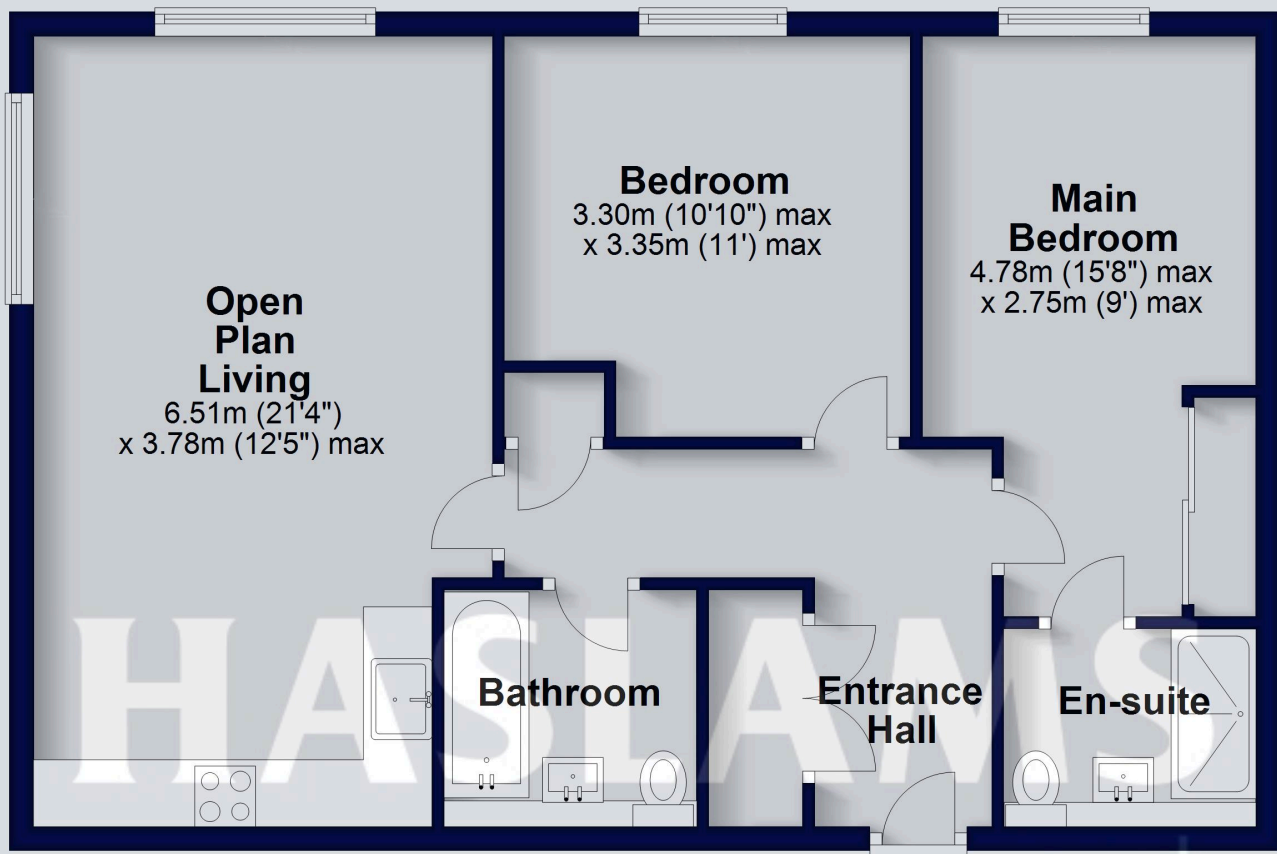
Electricity supply: Mains

Broadband/Mobile Info: Connections available. For an indication of specific speeds and supply of Broadband and Mobile, we advise applicants go to the Ofcom website Broadband and Mobile Coverage Checker.



First Floor

Approx. 65.6 sq. metres (706.3 sq. feet)



Total area: approx. 65.6 sq. metres (706.3 sq. feet)

This floorplan is for illustrative purposes only and is not to scale. The total area includes all the areas shown.
Plan produced using PlanUp.