

Property ref: 73458

Skylark House, Reading, RG2 0PA

£1,595 PCM

HASLAM'S
Lettings



A stunning two bedroom apartment situated in the exclusive Kennet Island development within walking distance to Green Park and easily accessible to the M4. The property has been recently redecorated throughout.
Reading Borough Council Tax Band C.

Available 07/07/2025

- Two double bedrooms; Master with en-suite; Recently redecorated throughout
- Open plan living and kitchen area; Modern appliances
- Secure underground parking; Furnished
- Close links to A329 & M4; Electric heating
- Walking distance to local amenities & bus routes
- EPC Rating B; Managed by HASLAM'S

*Fees For Assured Shorthold Tenancies: when you rent a property from us you will be required to pay a sum equivalent to one weeks' rent for a holding deposit. Upon successful application, this amount will be off set against your first months' rent. You will also be required to pay a security deposit equivalent to 5 weeks' rent which will be held and protected in line with Deposit legislation. For more information about our fees please visit: www.haslams.net
Fees for all other tenancies (Non Housing Act Tenancies / Company Lets): when you rent a property from us we will charge you a one-off fee per property. This charge is the equivalent of 15 days of the monthly rental charge (+VAT) with a minimum fee of £450 (inc.VAT) up to a maximum of £650 (inc.VAT). Other fees may apply depending on your circumstances.

0118 960 1055

lettings@haslams.net www.haslams.net

Haslams Estate Agents Ltd, 159 Friar Street, Reading, Berkshire, RG1 1HE

Water supply: Mains

Drainage info: Mains

Electricity supply: Mains

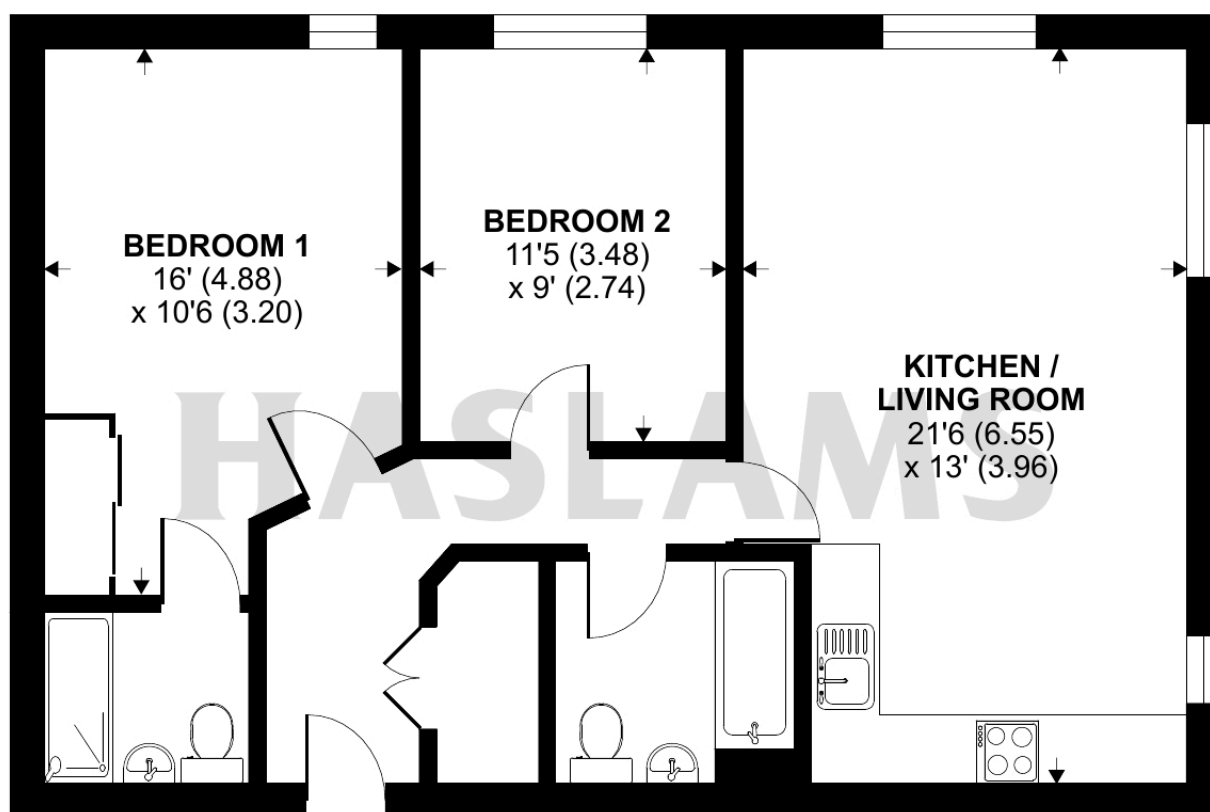
Broadband/Mobile Info: Connections available. For an indication of specific speeds and supply of Broadband and Mobile, we advise applicants go to the Ofcom website Broadband and Mobile Coverage Checker.



Drake Way, Reading, RG2

Approximate Area = 720 sq ft / 66.8 sq m

For identification only - Not to scale

**FIRST FLOOR**

Floor plan produced in accordance with RICS Property Measurement Standards incorporating International Property Measurement Standards (IPMS2 Residential). © n1cheom 2024. Produced for Haslams. REF: 1164868