

Property ref: 144574

St Andrews House, Reading, RG30

£2,100 PCM

HASLAM'S
Lettings



Situated within a period building to the west of Reading stands this lower ground floor three bedroom, three bathroom apartment. This property further benefits from a private split level garden with two seating areas.

Reading Borough Council Tax Band C.

Available 09/07/2025

- Three double bedrooms; Two with en-suites
- Fully fitted kitchen with appliances
- Family bathroom with shower over the bath
- Electric heating; EPC rating D
- Allocated parking for two cars
- Furnished; Managed by HASLAM'S

*Fees For Assured Shorthold Tenancies: when you rent a property from us you will be required to pay a sum equivalent to one weeks' rent for a holding deposit. Upon successful application, this amount will be off set against your first months' rent. You will also be required to pay a security deposit equivalent to 5 weeks' rent which will be held and protected in line with Deposit legislation. For more information about our fees please visit: www.haslams.net
Fees for all other tenancies (Non Housing Act Tenancies / Company Lets): when you rent a property from us we will charge you a one-off fee per property. This charge is the equivalent of 15 days of the monthly rental charge (+VAT) with a minimum fee of £450 (inc.VAT) up to a maximum of £650 (inc.VAT). Other fees may apply depending on your circumstances.

0118 960 1055

lettings@haslams.net www.haslams.net

Haslams Estate Agents Ltd, 159 Friar Street, Reading, Berkshire, RG1 1HE

Water supply: Mains

Drainage info: Mains

Electricity supply: Mains

Broadband/Mobile Info: Connections available. For an indication of specific speeds and supply of Broadband and Mobile, we advise applicants go to the Ofcom website Broadband and Mobile Coverage Checker.

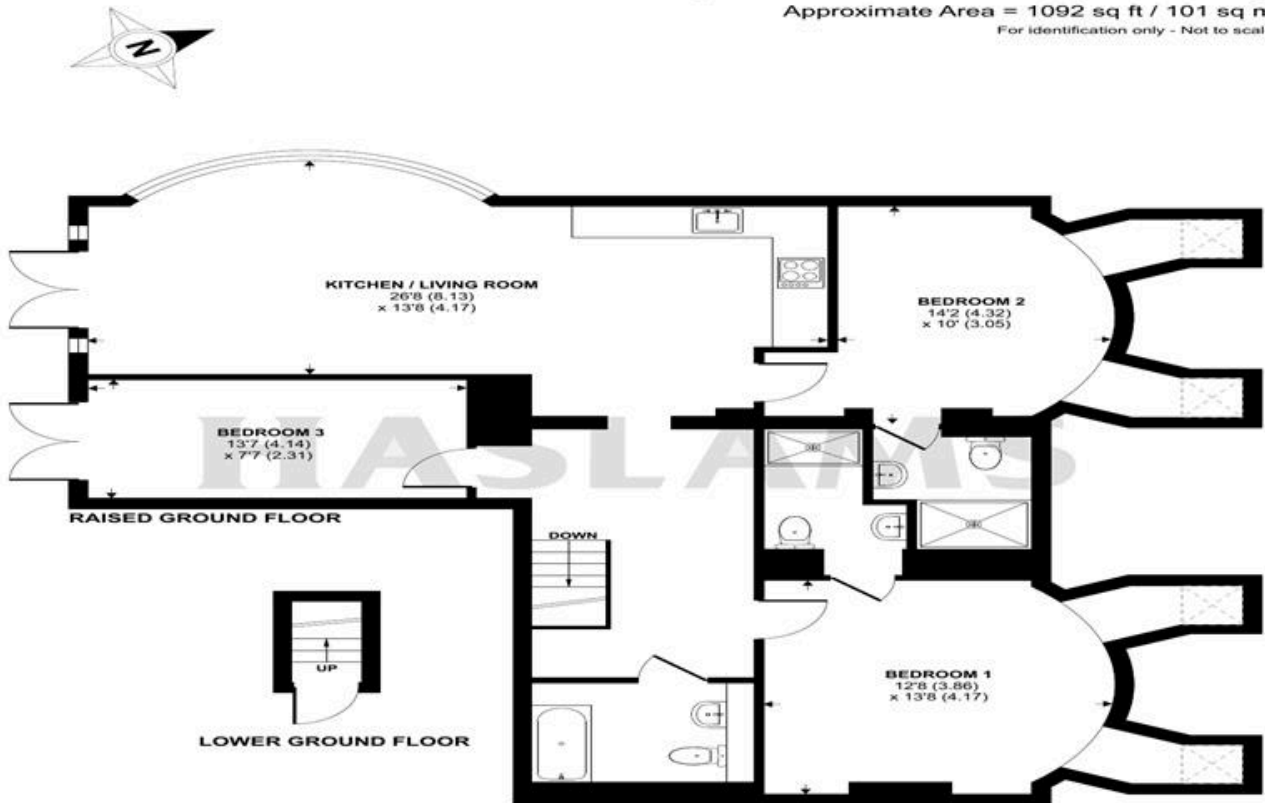




St. Andrews House, 28A Wilton Road, Reading

Approximate Area = 1092 sq ft / 101 sq m

For identification only - Not to scale

**Certified
Property
Measurer**

Floor plan produced in accordance with RICS Property Measurement Standards incorporating International Property Measurement Standards (IPMS2 Residential). © nchecom 2022.
Produced for Haslamss. REF: 880076