

Property ref: 55022

## Pages Garden, Reading, RG8 7JE

**£825 PCM**

**HASLAMs**  
Lettings



A ground floor studio apartment located in the heart of Pangbourne Village close to the train station, shops and local amenities.  
West Berkshire Council Tax Band A  
Water supply: Mains  
Drainage info: Mains  
Electricity supply: Mains  
Broadband/Mobile Info: Connections available. For an indication of specific speeds and supply of Broadband and Mobile, we advise applicants go to the Ofcom website Broadband and Mobile Coverage Checker.

- Good size living room / Bedroom with built-in wardrobe
- Fitted kitchen with washer drier / Shower room
- Electric heating / Communal gardens / EPC rating C
- Parking at an additional cost / Bike store
- £250 sundry additional to the rent to include:- water, electric and Wi-Fi
- Furnished / Sky ready / 32" Samsung LCD / Managed by Haslams

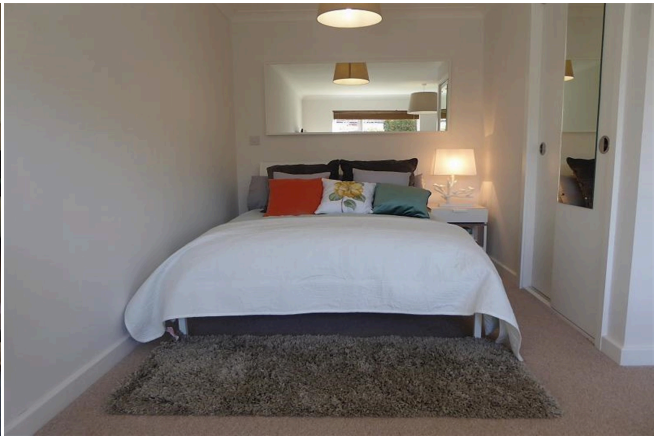
**Available 04/08/2025**

\*Fees For Assured Shorthold Tenancies: when you rent a property from us you will be required to pay a sum equivalent to one weeks' rent for a holding deposit. Upon successful application, this amount will be off set against your first months' rent. You will also be required to pay a security deposit equivalent to 5 weeks' rent which will be held and protected in line with Deposit legislation. For more information about our fees please visit: [www.haslams.net](http://www.haslams.net)  
Fees for all other tenancies (Non Housing Act Tenancies / Company Lets): when you rent a property from us we will charge you a one-off fee per property. This charge is the equivalent of 15 days of the monthly rental charge (+VAT) with a minimum fee of £450 (inc.VAT) up to a maximum of £650 (inc.VAT). Other fees may apply depending on your circumstances.

**0118 960 1055**

**[lettings@haslams.net](mailto:lettings@haslams.net) [www.haslams.net](http://www.haslams.net)**

**Haslams Estate Agents Ltd, 159 Friar Street, Reading, Berkshire, RG1 1HE**

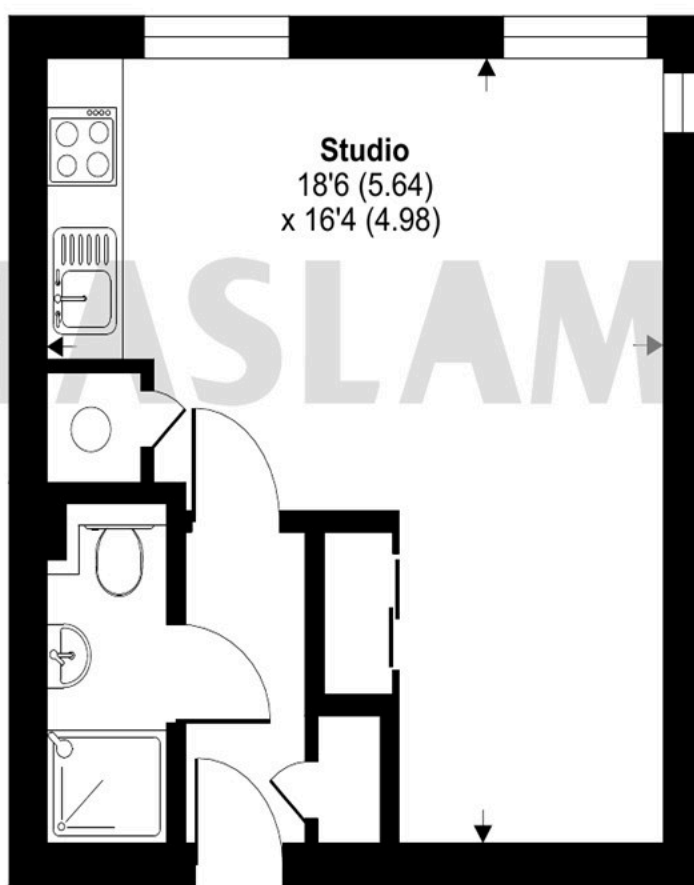




# Reading Road, Pangbourne, Reading, RG8

Approximate Area = 302 sq ft / 28.1 sq m

For identification only - Not to scale

**GROUND FLOOR**

Floor plan produced in accordance with RICS Property Measurement 2nd Edition,  
Incorporating International Property Measurement Standards (IPMS2 Residential). © nichecom 2025.  
Produced for Haslamss. REF: 1286185