

Property ref: 171254

Carraway Street, Reading, RG1 3GQ

£1,800 PCM

HASLAM'S
Lettings



A stunning two double bedroom, two bathroom fourth floor apartment located in Huntley Wharf, Reading town centre's newest and most sought after development.

Reading Borough Council tax band D.

Water supply: Mains

Drainage info: Mains

Electricity supply: Mains

Broadband/Mobile Info: Connections available. For an indication of specific speeds and supply of Broadband and Mobile, we advise applicants go to the Ofcom website Broadband and Mobile Coverage Checker.

- Two double bedrooms; Master with en-suite
- Family bathroom with shower over bath
- Private balcony; EPC rating B
- Fully fitted kitchen with appliances; Furnished; No parking
- £75 per month on top of the rent to cover hot water and heating via communal boiler
- Managed by HASLAM'S

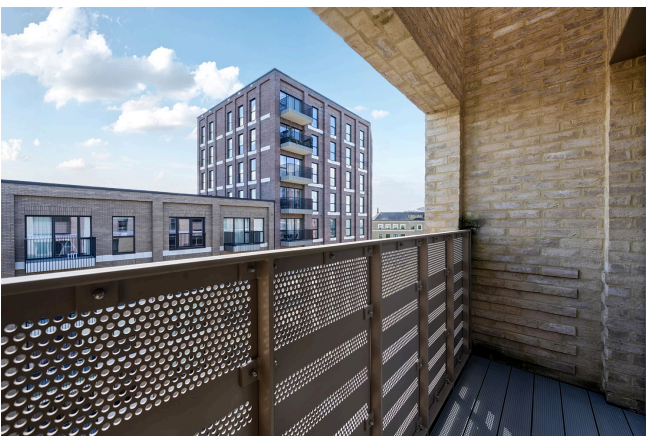
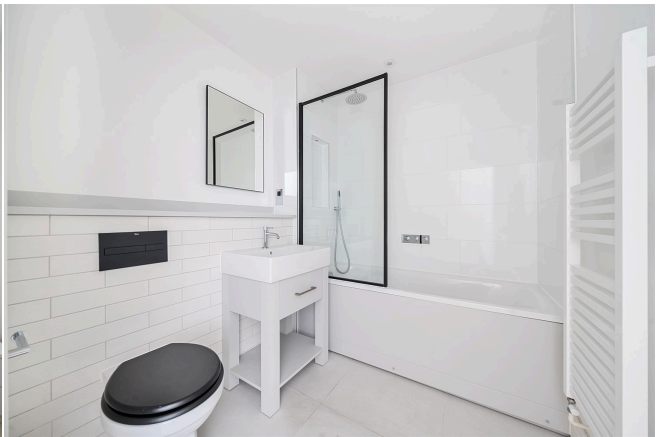
Available Now

*Fees For Assured Shorthold Tenancies: when you rent a property from us you will be required to pay a sum equivalent to one weeks' rent for a holding deposit. Upon successful application, this amount will be off set against your first months' rent. You will also be required to pay a security deposit equivalent to 5 weeks' rent which will be held and protected in line with Deposit legislation. For more information about our fees please visit: www.haslams.net
Fees for all other tenancies (Non Housing Act Tenancies / Company Lets): when you rent a property from us we will charge you a one-off fee per property. This charge is the equivalent of 15 days of the monthly rental charge (+VAT) with a minimum fee of £450 (inc.VAT) up to a maximum of £650 (inc.VAT). Other fees may apply depending on your circumstances.

0118 960 1055

lettings@haslams.net www.haslams.net

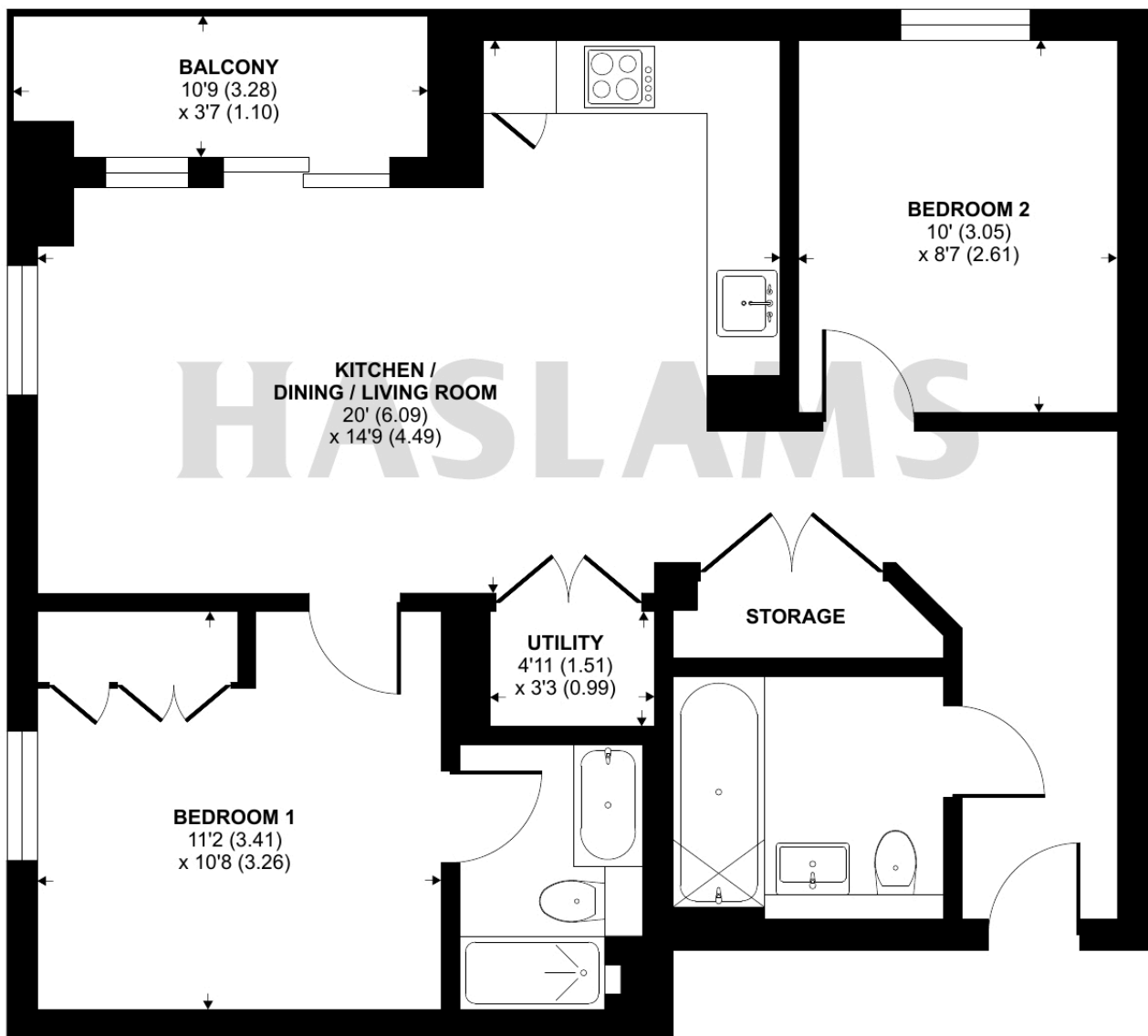
Haslams Estate Agents Ltd, 159 Friar Street, Reading, Berkshire, RG1 1HE



Carraway Street, Reading, RG1

Approximate Area = 681 sq ft / 63.3 sq m

For identification only - Not to scale



FIRST FLOOR



Floor plan produced in accordance with RICS Property Measurement 2nd Edition, Incorporating International Property Measurement Standards (IPMS2 Residential). © nichecom 2025. Produced for Haslams. REF: 1281591