

Property ref: 99001

Charnwood House, Reading, RG1 6QR

£1,250 PCM

HASLAM'S
Lettings



A well presented first floor apartment located within this popular purpose-built development on the western outskirts of Reading town centre and benefitting from excellent transport links.

Reading Borough Council Tax Band C.

Water supply: Mains

Drainage info: Mains

Electricity supply: Mains

Broadband/Mobile Info: Connections available. For an indication of specific speeds and supply of Broadband and Mobile, we advise applicants go to the Ofcom website 'Broadband and Mobile Coverage Checker'.

Available 21/06/2025

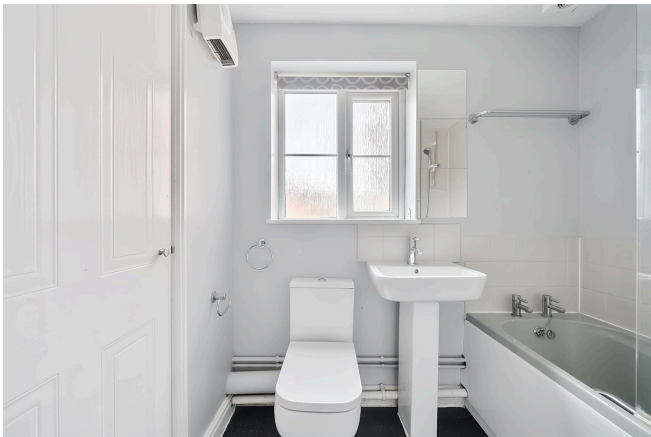
*Fees For Assured Shorthold Tenancies: when you rent a property from us you will be required to pay a sum equivalent to one weeks' rent for a holding deposit. Upon successful application, this amount will be off set against your first months' rent. You will also be required to pay a security deposit equivalent to 5 weeks' rent which will be held and protected in line with Deposit legislation. For more information about our fees please visit: www.haslams.net
Fees for all other tenancies (Non Housing Act Tenancies / Company Lets): when you rent a property from us we will charge you a one-off fee per property. This charge is the equivalent of 15 days of the monthly rental charge (+VAT) with a minimum fee of £450 (inc.VAT) up to a maximum of £650 (inc.VAT). Other fees may apply depending on your circumstances.

- Two double bedrooms
- Fitted kitchen with oven and hob
- Bathroom with shower over the bath
- Residents' parking area
- Electric heating; EPC Rating C
- Unfurnished; Managed by LANDLORD

0118 960 1055

lettings@haslams.net www.haslams.net

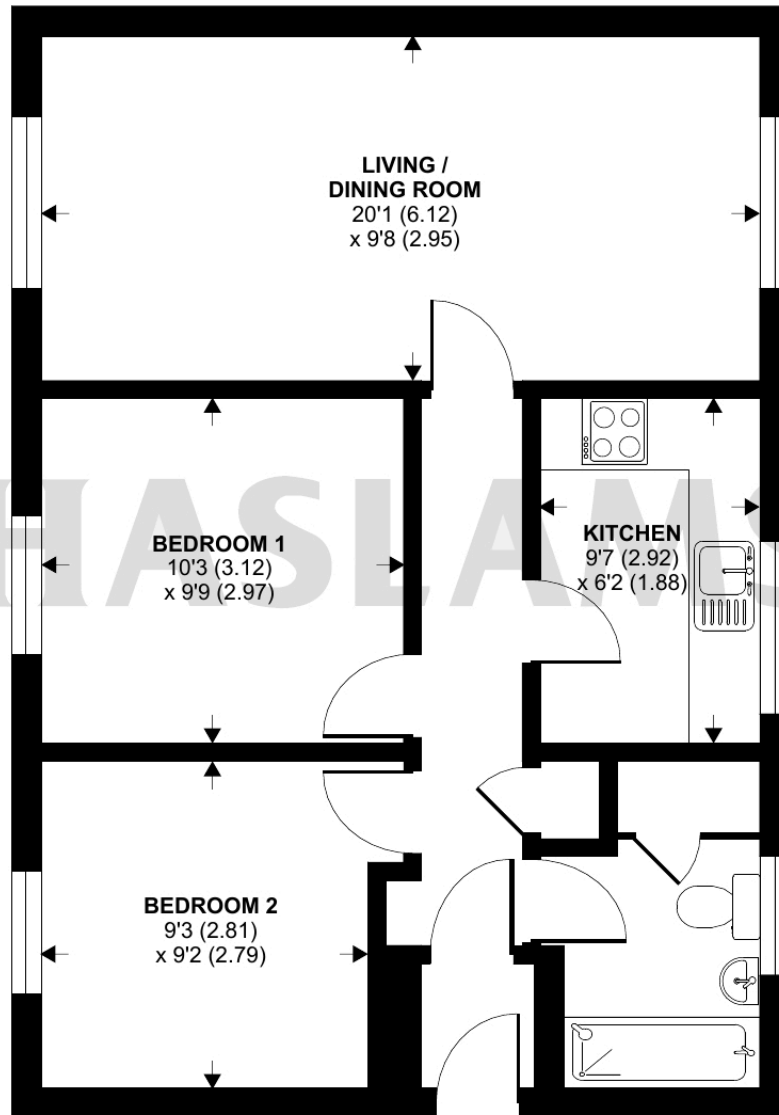
Haslams Estate Agents Ltd, 159 Friar Street, Reading, Berkshire, RG1 1HE



Charnwood House, Rembrandt Way, Reading, RG1

Approximate Area = 590 sq ft / 54.8 sq m

For identification only - Not to scale



FIRST FLOOR



Floor plan produced in accordance with RICS Property Measurement Standards incorporating International Property Measurement Standards (IPMS2 Residential). © n1cheom 2024. Produced for Haslams. REF: 1192997