

Property ref: 67703

Tippett Rise, Reading, RG2 0DZ

£950 PCM

HASLAMs
Lettings



A one bedroom apartment situated on the ground floor in a purpose-built block within walking distance of Reading town centre. The property is offered furnished and benefits from a parking space. Reading Borough Council tax band B.

Water supply: Mains

Drainage info: Mains

Electricity supply: Mains

Broadband/Mobile Info: Connections available. For an indication of specific speeds and supply of Broadband and Mobile, we advise applicants go to the Ofcom website 'Broadband and Mobile Coverage Checker'.

- Double bedroom with built in wardrobes
- Fitted kitchen; No pets allowed
- EPC rating D; Electric heating
- Close to The Oracle shopping centre
- Residents and visitor parking
- Furnished; Managed by HASLAMs

Available Now

*Fees For Assured Shorthold Tenancies: when you rent a property from us you will be required to pay a sum equivalent to one weeks' rent for a holding deposit. Upon successful application, this amount will be off set against your first months' rent. You will also be required to pay a security deposit equivalent to 5 weeks' rent which will be held and protected in line with Deposit legislation. For more information about our fees please visit: www.haslamss.net
Fees for all other tenancies (Non Housing Act Tenancies / Company Lets): when you rent a property from us we will charge you a one-off fee per property. This charge is the equivalent of 15 days of the monthly rental charge (+VAT) with a minimum fee of £450 (inc.VAT) up to a maximum of £650 (inc.VAT). Other fees may apply depending on your circumstances.

0118 960 1055

lettings@haslamss.net www.haslamss.net

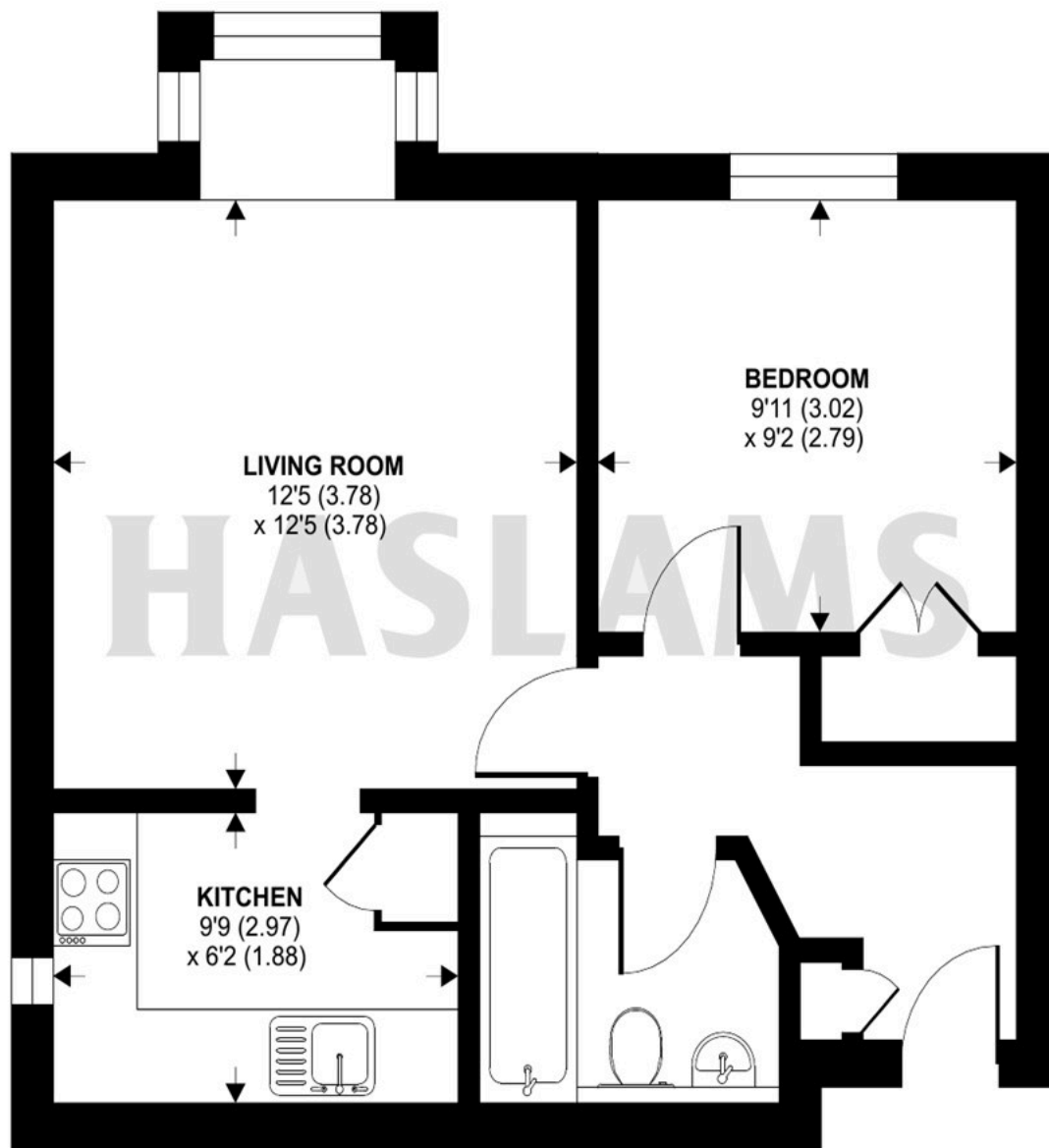
Haslamss Estate Agents Ltd, 159 Friar Street, Reading, Berkshire, RG1 1HE



Tippett Rise, Reading, RG2

Approximate Area = 447 sq ft / 41.5 sq m

For identification only - Not to scale

**GROUND FLOOR**

Floor plan produced in accordance with RICS Property Measurement Standards incorporating International Property Measurement Standards (IPMS2 Residential). © n1checom 2023. Produced for Haslam's. REF: 935050