

Property ref: 108989

Riverside View, Reading, RG1 6FF

£1,850 PCM

HASLAM'S
Lettings



This modern two bedroom apartment has access onto its own private terrace, which looks directly onto the calming River Kennet. An impressive open plan kitchen / living area also opens onto the north facing balcony, and with its luxury fixtures and fittings, this town centre apartment is ideal for professionals. Reading Borough Council Tax Band D.

Available 15/05/2025

- Two double bedrooms, one with en-suite
- Fully fitted kitchen with appliances
- Gas central heating; EPC rating B
- Allocated under croft parking; Private terrace
- Furnished; River views
- Managed by HASLAM'S

*Fees For Assured Shorthold Tenancies: when you rent a property from us you will be required to pay a sum equivalent to one weeks' rent for a holding deposit. Upon successful application, this amount will be off set against your first months' rent. You will also be required to pay a security deposit equivalent to 5 weeks' rent which will be held and protected in line with Deposit legislation. For more information about our fees please visit: www.haslams.net
Fees for all other tenancies (Non Housing Act Tenancies / Company Lets): when you rent a property from us we will charge you a one-off fee per property. This charge is the equivalent of 15 days of the monthly rental charge (+VAT) with a minimum fee of £450 (inc.VAT) up to a maximum of £650 (inc.VAT). Other fees may apply depending on your circumstances.

0118 960 1055

lettings@haslams.net www.haslams.net

Haslams Estate Agents Ltd, 159 Friar Street, Reading, Berkshire, RG1 1HE

Water supply: Mains

Drainage info: Mains

Electricity supply: Mains

Gas supply: Mains

Broadband/Mobile Info: Connections available. For an indication of specific speeds and supply of Broadband and Mobile, we advise applicants go to the Ofcom website Broadband and Mobile Coverage Checker.

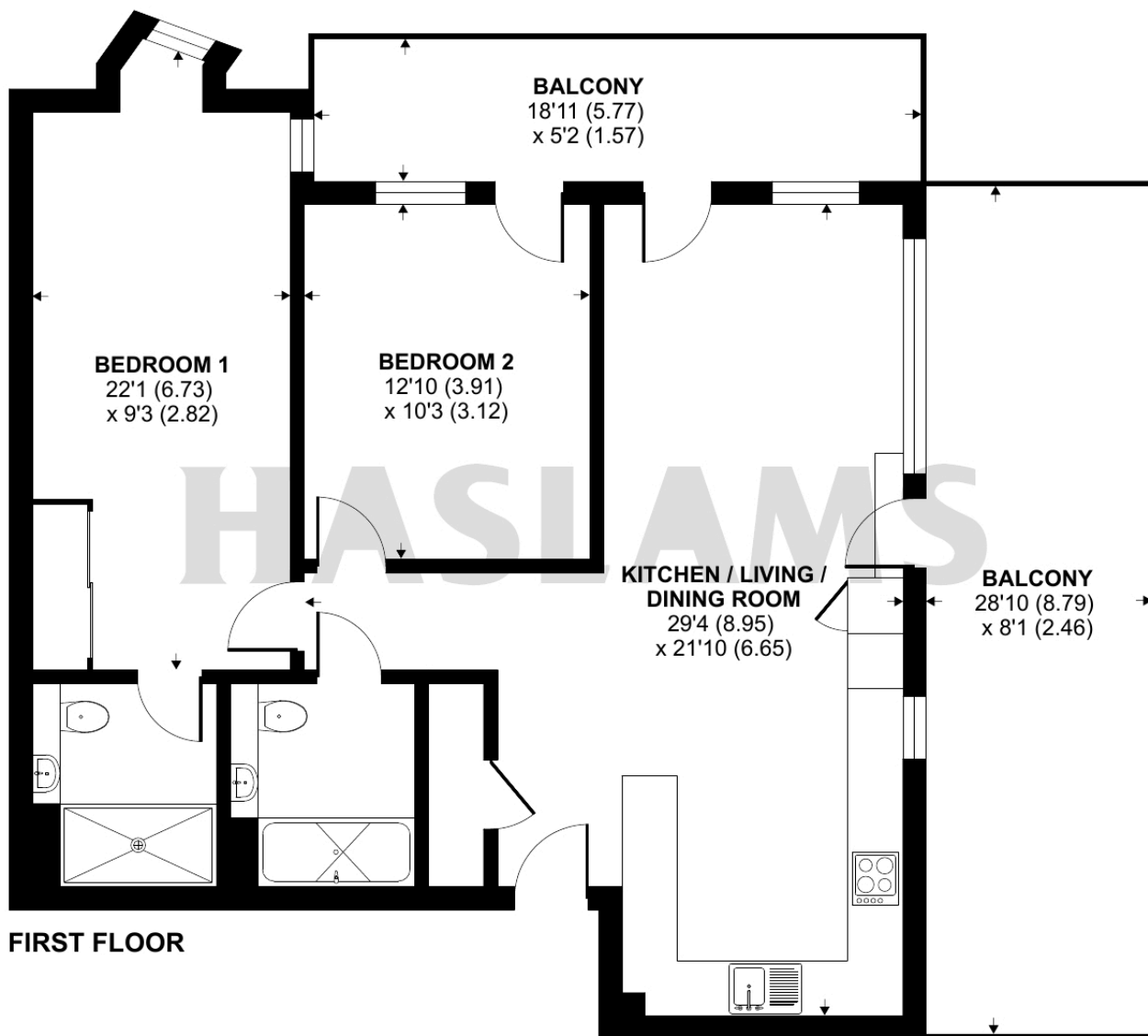




Berkeley Avenue, Reading, RG1

Approximate Internal Area = 869 sq ft / 80.7 sq m

For identification only - Not to scale



Floor plan produced in accordance with RICS Property Measurement Standards incorporating International Property Measurement Standards (IPMS2 Residential). © n1cheom 2024.
Produced for Haslamss. REF: 1105807