

Property ref: 63447

The Chambers, Reading, RG1 4FF

£1,075 PCM

HASLAM'S
Lettings



A modern one bedroom apartment situation in the town centre within close proximity to Reading mainline station and easy access to the M4 motorway.

Reading Borough Council Tax B.

Water supply: Mains

Drainage info: Mains

Electricity supply: Mains

Broadband/Mobile Info: Connections available. For an indication of specific speeds and supply of Broadband and Mobile, we advise applicants go to the Ofcom website Broadband and Mobile Coverage Checker.

- A modern one bedroom apartment; Total floorplan 35 m2
- Fully fitted contemporary kitchen
- Shower room; Electric Heating
- Allocated parking
- Central Reading location; EPC rating E
- Furnished; Managed by LANDLORD

Available 22/04/2025

*Fees For Assured Shorthold Tenancies: when you rent a property from us you will be required to pay a sum equivalent to one weeks' rent for a holding deposit. Upon successful application, this amount will be off set against your first months' rent. You will also be required to pay a security deposit equivalent to 5 weeks' rent which will be held and protected in line with Deposit legislation. For more information about our fees please visit: www.haslams.net
Fees for all other tenancies (Non Housing Act Tenancies / Company Lets): when you rent a property from us we will charge you a one-off fee per property. This charge is the equivalent of 15 days of the monthly rental charge (+VAT) with a minimum fee of £450 (inc.VAT) up to a maximum of £650 (inc.VAT). Other fees may apply depending on your circumstances.

0118 960 1055

lettings@haslams.net www.haslams.net

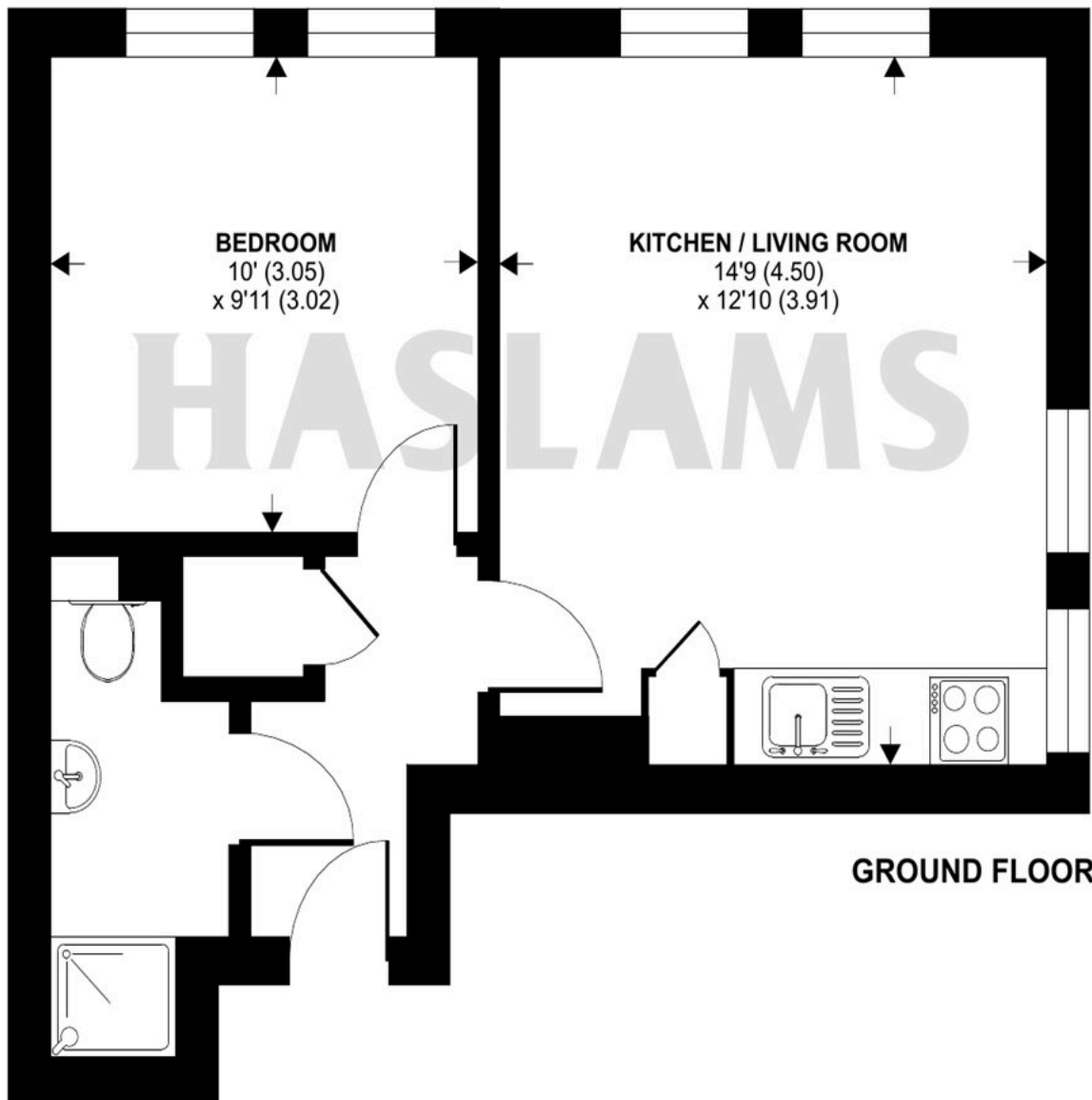
Haslams Estate Agents Ltd, 159 Friar Street, Reading, Berkshire, RG1 1HE



East Street, Reading, RG1

Approximate Area = 381 sq ft / 35.4 sq m

For identification only - Not to scale



Floor plan produced in accordance with RICS Property Measurement 2nd Edition,
Incorporating International Property Measurement Standards (IPMS2 Residential). © nichecom 2025.
Produced for Haslams. REF: 1264103