

Property ref: 157496

Connecticut Street, Reading, RG2 6AN

£2,250 PCM

HASLAM'S
Lettings



A stunning, three double bedroom town house, available within the sought-after Green Park Village development to the south of Reading. With lakeside walks and local amenities on the doorstep, the property benefits from excellent transport links to the M4, Green Park and Reading town centre.
Reading Borough Council Tax Band E.

Available 23/12/2024

- Three double bedrooms; Master with en-suite
- Further family sized bath & shower room
- Fully fitted kitchen with appliances
- One allocated parking space; One Garage
- Gas central heating; EPC rating B
- Unfurnished; Managed by HASLAM'S

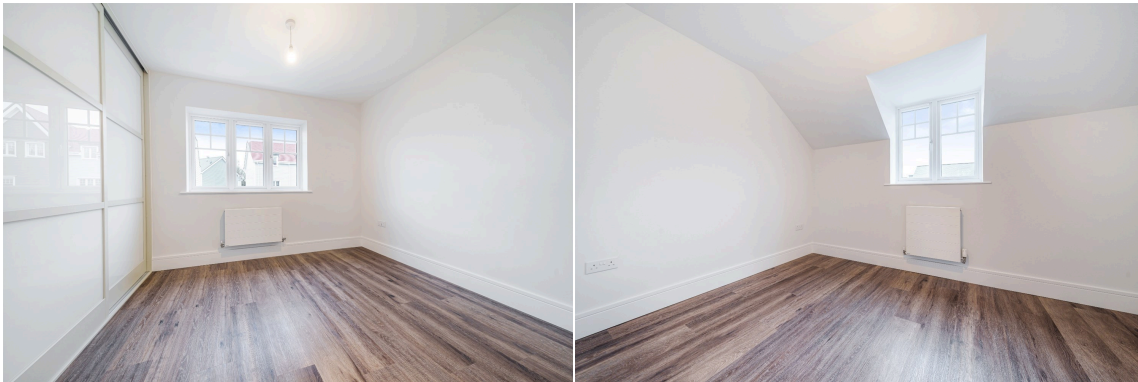
*Fees For Assured Shorthold Tenancies: when you rent a property from us you will be required to pay a sum equivalent to one weeks' rent for a holding deposit. Upon successful application, this amount will be off set against your first months' rent. You will also be required to pay a security deposit equivalent to 5 weeks' rent which will be held and protected in line with Deposit legislation. For more information about our fees please visit: www.haslams.net
Fees for all other tenancies (Non Housing Act Tenancies / Company Lets): when you rent a property from us we will charge you a one-off fee per property. This charge is the equivalent of 15 days of the monthly rental charge (+VAT) with a minimum fee of £450 (inc.VAT) up to a maximum of £650 (inc.VAT). Other fees may apply depending on your circumstances.

0118 960 1055

lettings@haslams.net www.haslams.net

Haslams Estate Agents Ltd, 159 Friar Street, Reading, Berkshire, RG1 1HE

Water supply: Mains
Drainage info: Mains
Electricity supply: Mains
Gas supply: Mains
Broadband/Mobile Info: Connections available. For an indication of specific speeds and supply of Broadband and Mobile, we advise applicants go to the Ofcom website `Broadband and Mobile Coverage Checker`.





Connecticut Street, Reading, RG2

Approximate Area = 1206 sq ft / 112 sq m

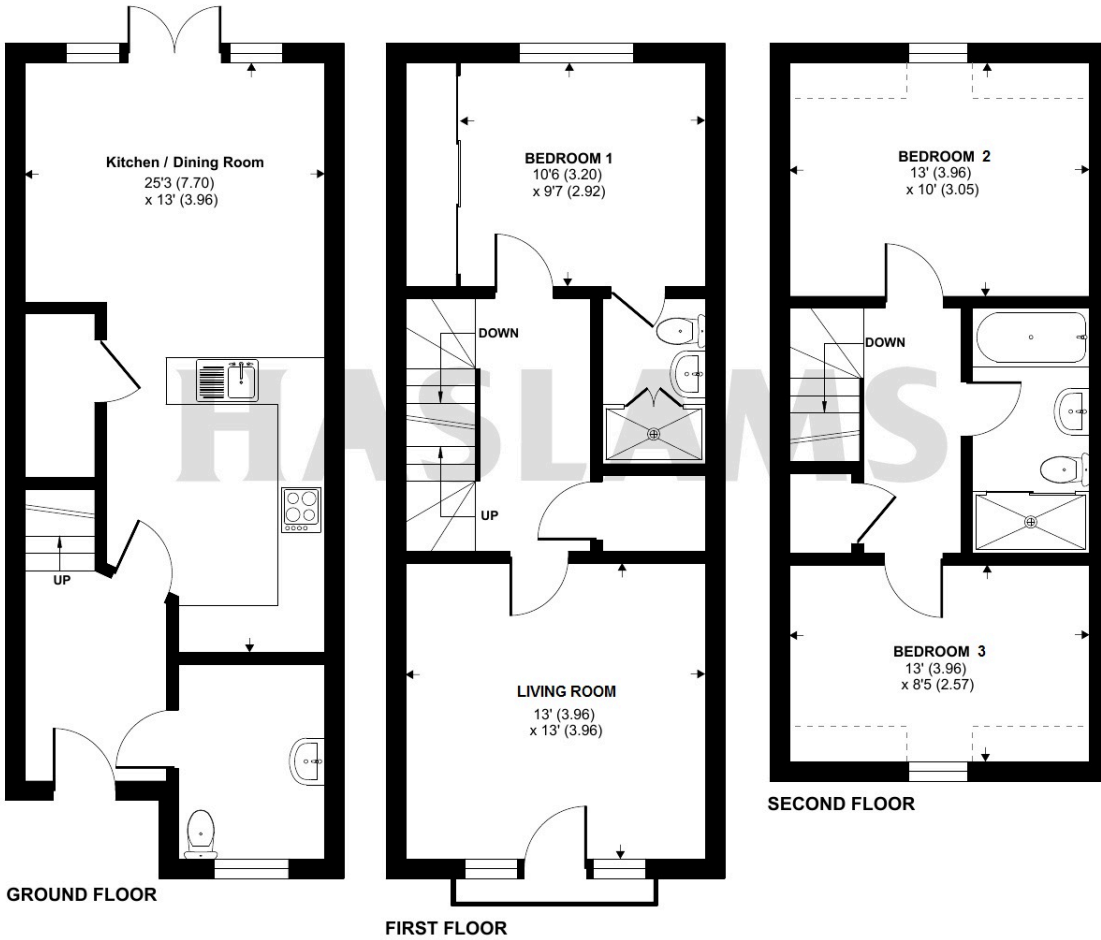
Limited Use Area(s) = 30 sq ft / 2.7 sq m

Total = 1236 sq ft / 114.7 sq m

For identification only - Not to scale



Denotes restricted head height



Floor plan produced in accordance with RICS Property Measurement Standards incorporating International Property Measurement Standards (IPMS2 Residential). © n/checom 2023. Produced for Haslams. REF: 1052899