

Property ref: 158358

Palmer Street, Reading, RG1 3GZ

£1,800 PCM

HASLAM'S
Lettings



A modern new two bedroom second floor apartment, located in the town centre, superbly built by Berkley Homes. The property is just a few minutes walk from Reading train station. Reading Borough Council Tax Band D

- Two double bedrooms, master with en suite
- Modern family bathroom with shower over bath
- Private balcony; Allocated parking
- Fully fitted kitchen with appliances
- Furnished; EPC rating B
- Managed by Landlord

Available 16/12/2024

*Fees For Assured Shorthold Tenancies: when you rent a property from us you will be required to pay a sum equivalent to one weeks' rent for a holding deposit. Upon successful application, this amount will be off set against your first months' rent. You will also be required to pay a security deposit equivalent to 5 weeks' rent which will be held and protected in line with Deposit legislation. For more information about our fees please visit: www.haslams.net
Fees for all other tenancies (Non Housing Act Tenancies / Company Lets): when you rent a property from us we will charge you a one-off fee per property. This charge is the equivalent of 15 days of the monthly rental charge (+VAT) with a minimum fee of £450 (inc.VAT) up to a maximum of £650 (inc.VAT). Other fees may apply depending on your circumstances.

0118 960 1055

lettings@haslams.net www.haslams.net

Haslams Estate Agents Ltd, 159 Friar Street, Reading, Berkshire, RG1 1HE

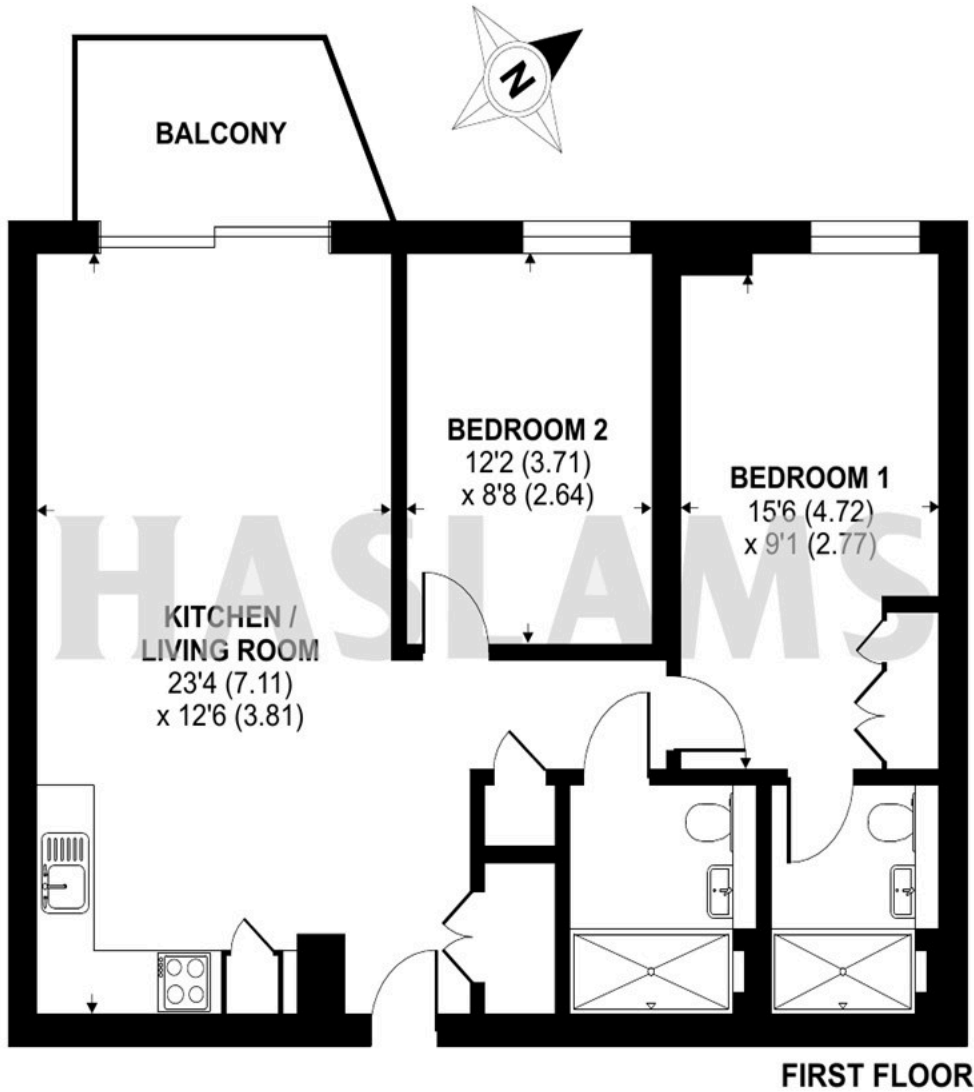
Water supply: Mains
Drainage info: Mains
Electricity supply: Mains
Gas supply: Communal
Broadband/Mobile Info: Connections available. For an indication of specific speeds and supply of Broadband and Mobile, we advise applicants go to the Ofcom website 'Broadband and Mobile Coverage Checker'.



Palmer Street, Reading, RG1

Approximate Area = 753 sq ft / 70 sq m

For identification only - Not to scale



 Floor plan produced in accordance with RICS Property Measurement 2nd Edition, incorporating International Property Measurement Standards (IPMS2 Residential). © nchecon 2024. Produced for Haslams. REF: 1201913