

Property ref: 166501

Kenavon Drive, Reading, RG1 3FW

£2,000 PCM

HASLAM'S
Lettings



The Osbourne design at Olivers Place is a 2-bedroom split level apartment in the heart of Reading town centre. The apartment features an open-plan kitchen/living area which is both stylish and functional, illuminated by natural light. The bedrooms have fitted wardrobes to maximise space, served by the stylish ensembles to both bedrooms. The location offers great connectivity to major cities including London and Birmingham via road and rail, plus access to the Huntley Wharf Concierge (open 12 hours a day, 7 days a week).
Reading Borough Council Tax Band TBC

- Two bedroom, split level apartment
- Fully fitted kitchen with high quality appliances; EPC Rating B
- 1st floor position; Communal boiler
- Furnished; Parking available for an additional £75pcm
- One month deposit; Managed by Touchstone

Available 01/11/2024

*Fees For Assured Shorthold Tenancies: when you rent a property from us you will be required to pay a sum equivalent to one weeks' rent for a holding deposit. Upon successful application, this amount will be off set against your first months' rent. You will also be required to pay a security deposit equivalent to 5 weeks' rent which will be held and protected in line with Deposit legislation. For more information about our fees please visit: www.haslams.net
Fees for all other tenancies (Non Housing Act Tenancies / Company Lets): when you rent a property from us we will charge you a one-off fee per property. This charge is the equivalent of 15 days of the monthly rental charge (+VAT) with a minimum fee of £450 (inc.VAT) up to a maximum of £650 (inc.VAT). Other fees may apply depending on your circumstances.

0118 960 1055

lettings@haslams.net www.haslams.net

Haslams Estate Agents Ltd, 159 Friar Street, Reading, Berkshire, RG1 1HE

Heating Type (Gas, Elec, communal boiler etc.): COMMUNAL

Water supply: MAINS

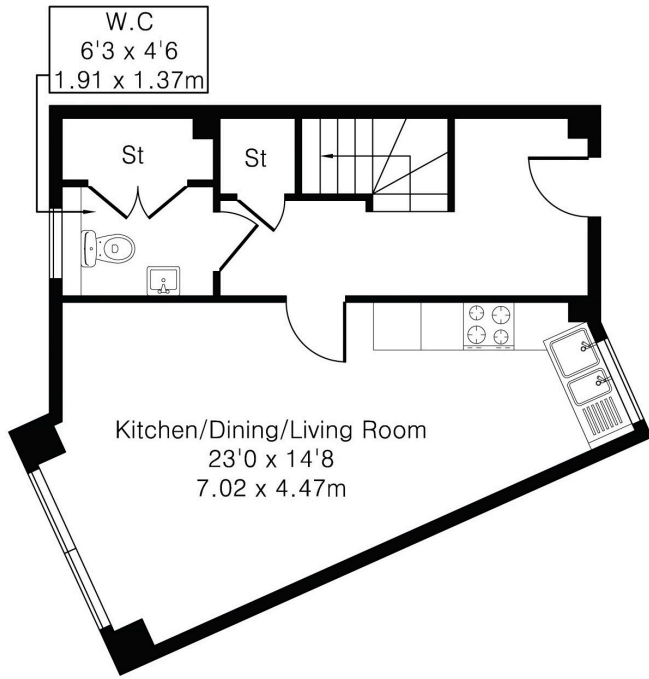
Drainage info: MAINS

Electricity supply: MAINS

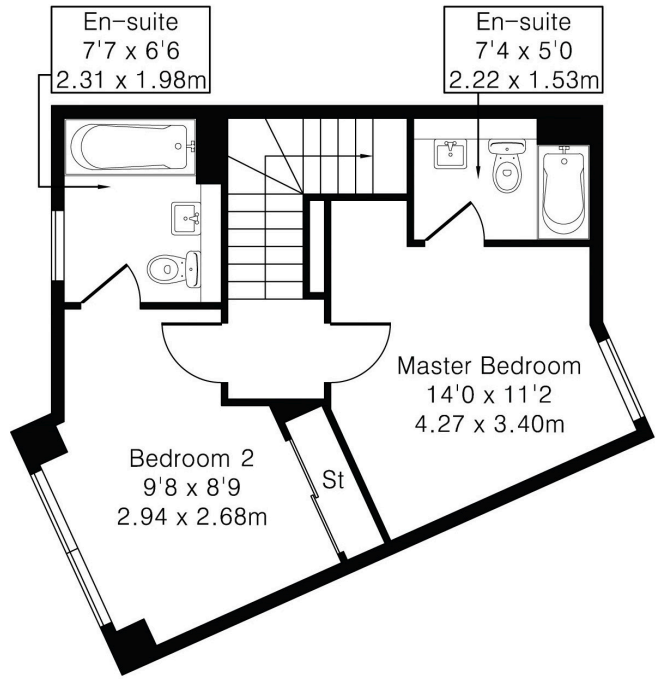
Gas supply: N/A

Broadband/Mobile Info: Connections available. For an indication of specific speeds and supply of Broadband and Mobile, we advise applicants go to the Ofcom website 'Broadband and Mobile Coverage Checker'.





Ground Floor



First Floor