

Property ref: 164983

4 Palmer Street, Reading, RG1 3HY

£1,800 PCM

HASLAM'S
Lettings



A modern two bedroom apartment, located in the town centre, superbly built by Berkeley Homes.
Reading Borough Council tax band D. No Pets.

Available Now

- Two double bedrooms with built in wardrobes
- Bathroom with shower over bath, master with ensuite
- Fully fitted kitchen; No parking
- EPC rating B; Hot water and heating via communal boiler
- Within walking distance to Reading Station
- Furnished; Managed by Landlord

*Fees For Assured Shorthold Tenancies: when you rent a property from us you will be required to pay a sum equivalent to one weeks' rent for a holding deposit. Upon successful application, this amount will be off set against your first months' rent. You will also be required to pay a security deposit equivalent to 5 weeks' rent which will be held and protected in line with Deposit legislation. For more information about our fees please visit: www.haslams.net
Fees for all other tenancies (Non Housing Act Tenancies / Company Lets): when you rent a property from us we will charge you a one-off fee per property. This charge is the equivalent of 15 days of the monthly rental charge (+VAT) with a minimum fee of £450 (inc.VAT) up to a maximum of £650 (inc.VAT). Other fees may apply depending on your circumstances.

0118 960 1055

lettings@haslams.net www.haslams.net

Haslams Estate Agents Ltd, 159 Friar Street, Reading, Berkshire, RG1 1HE

Heating Type (Gas, Elec, communal boiler etc.): COMMUNAL

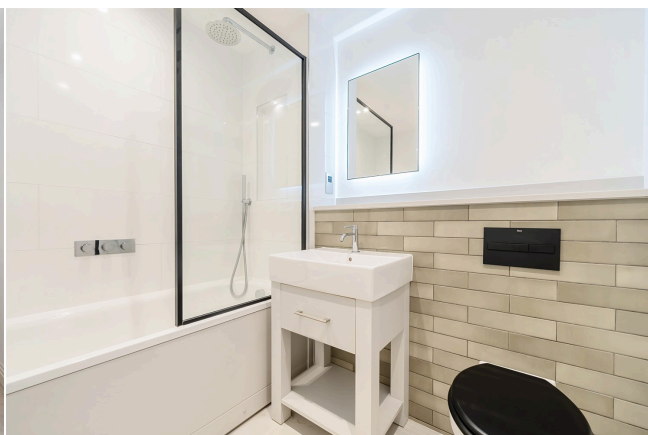
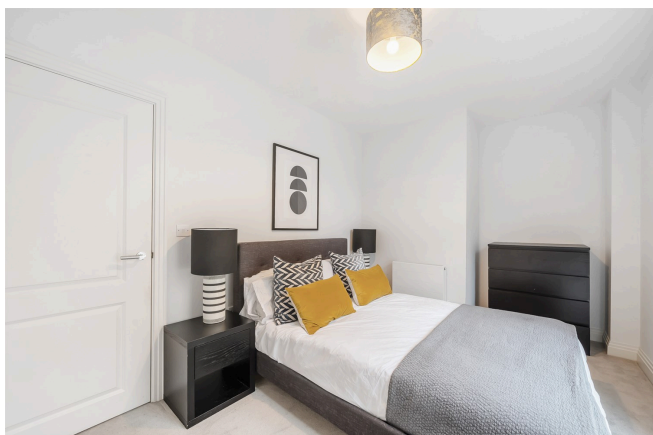
Water supply: MAINS

Drainage info: MAINS

Electricity supply: MAINS

Gas supply: N/A

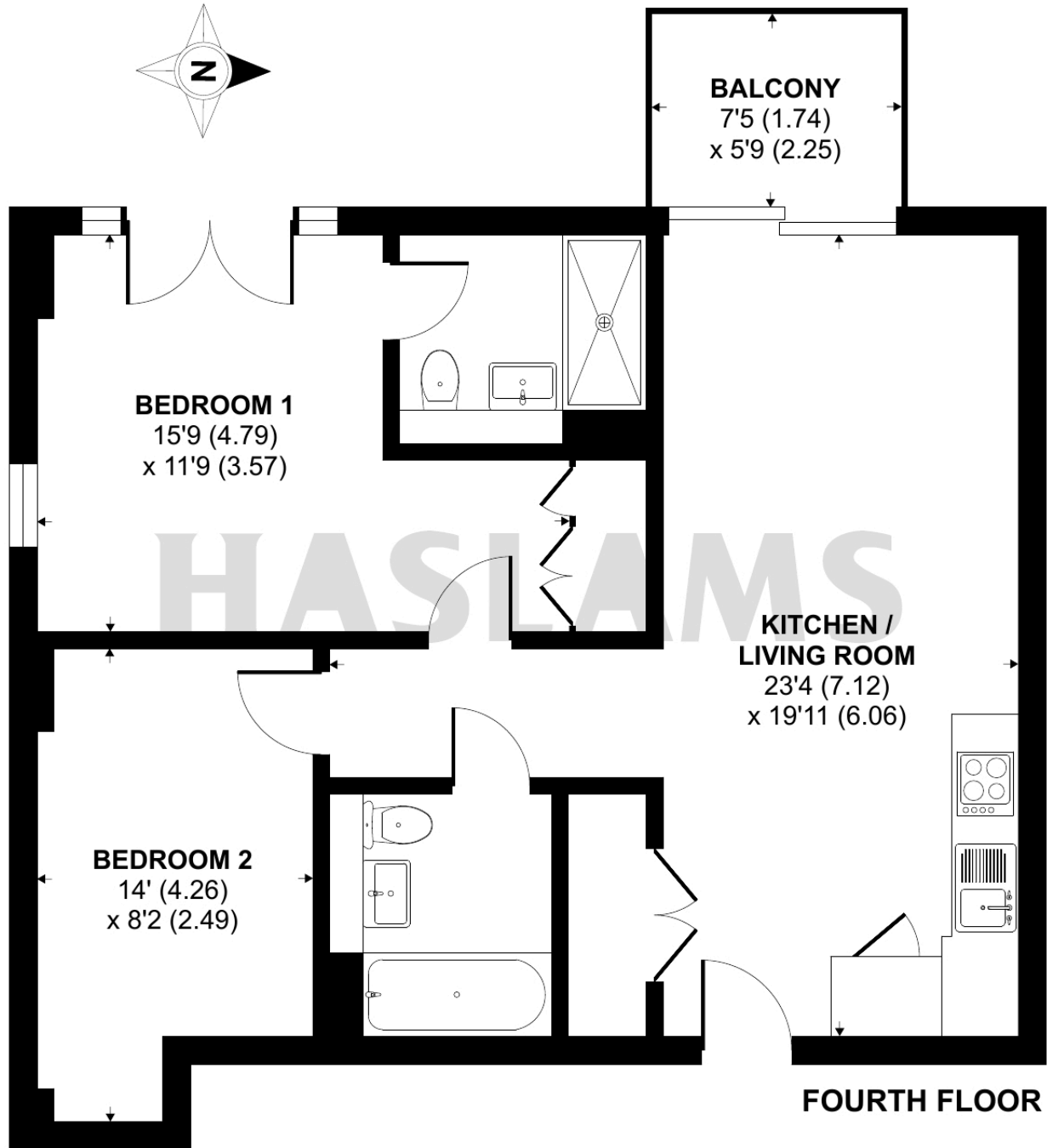
Broadband/Mobile Info: Connections available. For an indication of specific speeds and supply of Broadband and Mobile, we advise applicants go to the Ofcom website 'Broadband and Mobile Coverage Checker'.



Palmer Street, Reading, RG1

Approximate Area = 695 sq ft / 64.5 sq m

For identification only - Not to scale



Floor plan produced in accordance with RICS Property Measurement Standards incorporating International Property Measurement Standards (IPMS2 Residential). © n1checom 2024. Produced for Haslam's. REF: 1194084