

Property ref: 159913

**HASLAM'S**  
 Lettings

**Olivers Place,  
 Reading, RG1 3HU**
**£1,475 PCM**


The Palmer allows you to experience modern riverside living in this stylish 1-bedroom apartment. This property is in one of the most exclusive addresses in central Reading - Olivers Place at Huntley Wharf, and features a thoughtfully designed open-plan kitchen/living area on entrance. With a well-appointed bathroom and contemporary design elements, this luxury apartment has a lot to offer. This apartment has great connectivity to major cities including London and Birmingham, as well as proximity to popular shops, restaurants and bars, plus access to concierge services (open 12 hours a day, 7 days a week). Reading Borough Council Tax Band C

**Available 23/10/2024**

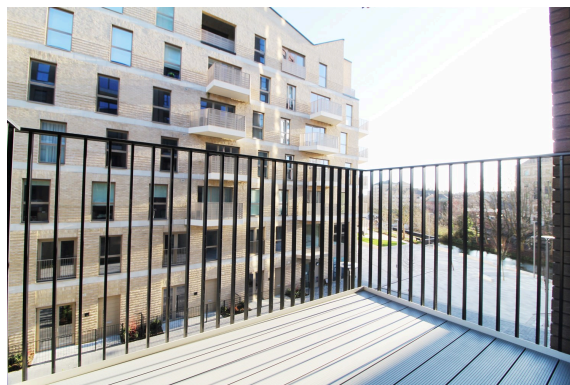
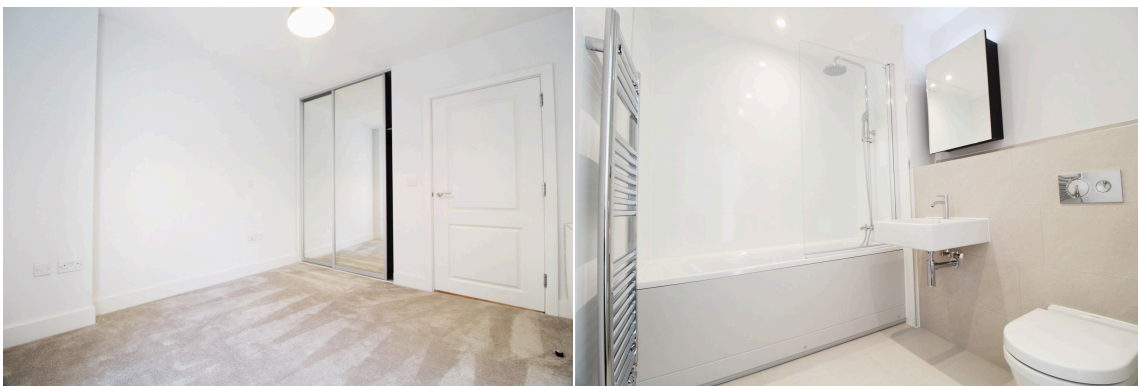
- One bedroom apartment finished to an exceptional standard
- Fully fitted kitchen with high quality appliances
- Balcony and views across Palmer Street
- Modern and stylish Bathroom
- Available furnished; Allocated parking at extra cost of £75 per month
- EPC rating B; Managed by Touchstone

\*Fees For Assured Shorthold Tenancies: when you rent a property from us you will be required to pay a sum equivalent to one weeks' rent for a holding deposit. Upon successful application, this amount will be off set against your first months' rent. You will also be required to pay a security deposit equivalent to 5 weeks' rent which will be held and protected in line with Deposit legislation. For more information about our fees please visit: [www.haslams.net](http://www.haslams.net)  
 Fees for all other tenancies (Non Housing Act Tenancies / Company Lets): when you rent a property from us we will charge you a one-off fee per property. This charge is the equivalent of 15 days of the monthly rental charge (+VAT) with a minimum fee of £450 (inc.VAT) up to a maximum of £650 (inc.VAT). Other fees may apply depending on your circumstances.

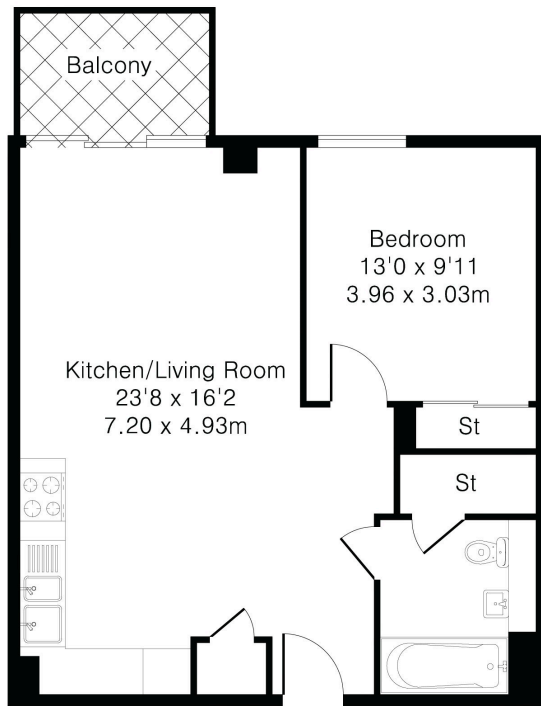
**0118 960 1055**
**[lettings@haslams.net](mailto:lettings@haslams.net) [www.haslams.net](http://www.haslams.net)**
**Haslams Estate Agents Ltd, 159 Friar Street, Reading, Berkshire, RG1 1HE**

Water supply: MAINS  
Drainage info: MAINS  
Electricity supply: MAINS  
Gas supply: N/A

Broadband/Mobile Info: Connections available. For an indication of specific speeds and supply of Broadband and Mobile, we advise applicants go to the Ofcom website `Broadband and Mobile Coverage Checker`.



Approximate Gross Internal Area 528 sq ft – 49 sq m



[www.fox.com](https://www.fox.com)