

Property ref: 109753

Riverside View, Reading, RG1 6FF

£1,750 PCM

HASLAM'S
Lettings



This modern two bedroom apartment offers access onto your own private terrace, which looks directly onto the River Kennet. An impressive open plan kitchen/living area also opens onto a north facing balcony, and with its luxury fixtures and fittings, this town centre apartment is ideal for professionals. Reading Borough Council tax band D.

Available Now

- Two double bedrooms - one with en-suite
- Fully fitted kitchen with appliances
- Gas central heating; EPC rating B
- Allocated under croft parking; Private terrace
- Furnished; River views
- Managed by HASLAM'S

*Fees For Assured Shorthold Tenancies: when you rent a property from us you will be required to pay a sum equivalent to one weeks' rent for a holding deposit. Upon successful application, this amount will be off set against your first months' rent. You will also be required to pay a security deposit equivalent to 5 weeks' rent which will be held and protected in line with Deposit legislation. For more information about our fees please visit: www.haslams.net
Fees for all other tenancies (Non Housing Act Tenancies / Company Lets): when you rent a property from us we will charge you a one-off fee per property. This charge is the equivalent of 15 days of the monthly rental charge (+VAT) with a minimum fee of £450 (inc.VAT) up to a maximum of £650 (inc.VAT). Other fees may apply depending on your circumstances.

0118 960 1055

lettings@haslams.net www.haslams.net

Haslams Estate Agents Ltd, 159 Friar Street, Reading, Berkshire, RG1 1HE

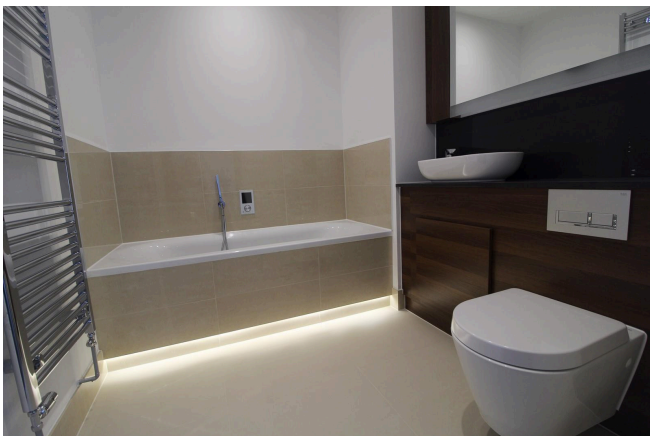
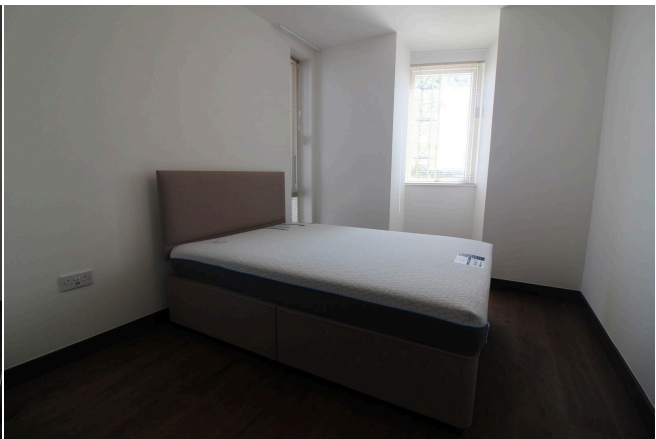
Water supply: Mains

Drainage info: Mains

Electricity supply: Mains

Gas supply: Mains

Broadband/Mobile Info: Connections available. For an indication of specific speeds and supply of Broadband and Mobile, we advise applicants go to the Ofcom website 'Broadband and Mobile Coverage Checker'.

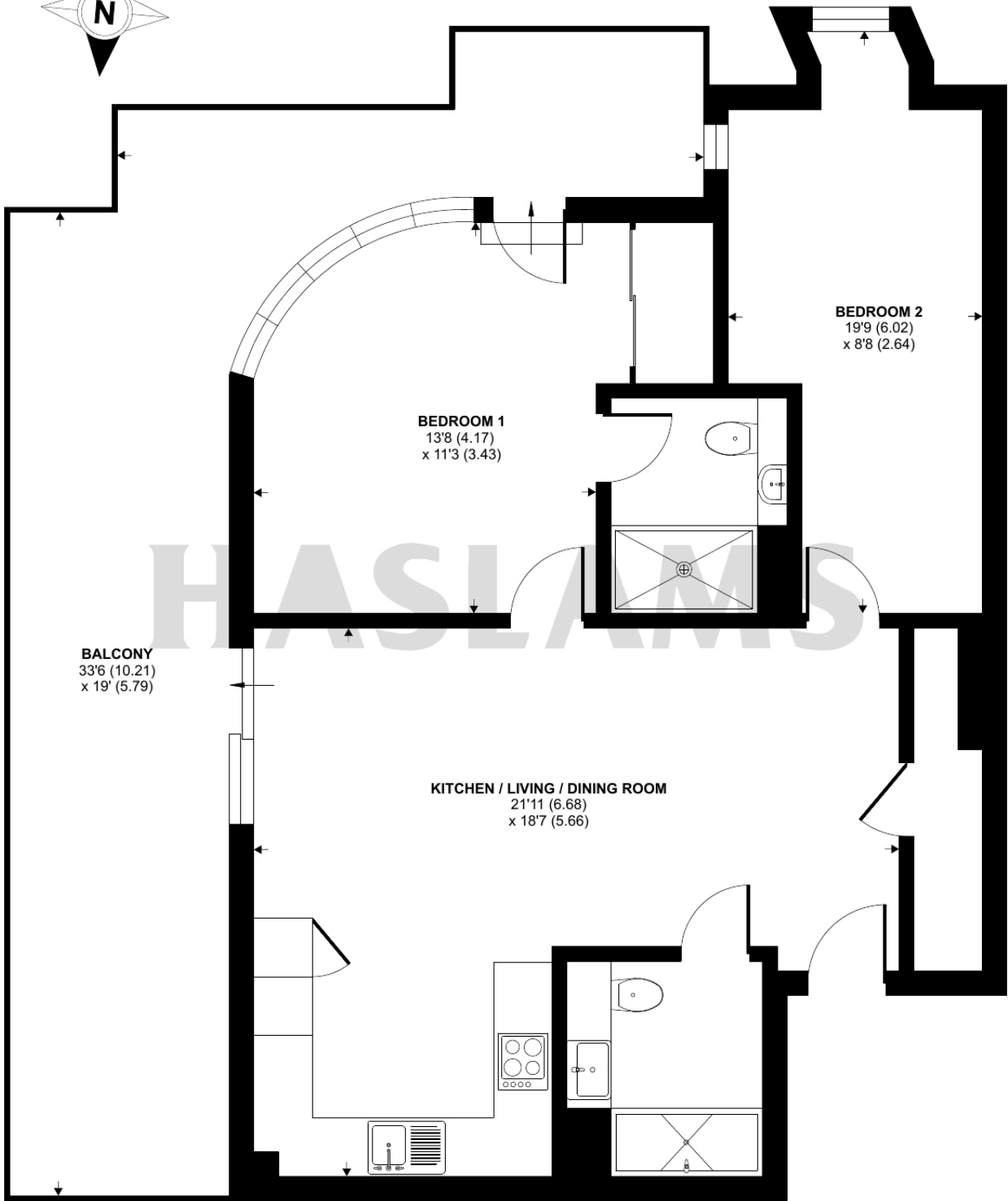




Riverside View, 5-9 Berkeley Avenue, Reading, RG1

Approximate Area = 786 sq ft / 73 sq m

For identification only - Not to scale



FIRST FLOOR



Floor plan produced in accordance with RICS Property Measurement Standards incorporating International Property Measurement Standards (IPMS2 Residential). © n1cheom 2024. Produced for Haslam's. REF: 1191931