

Property ref: 61067

Honister, Reading, RG1 7AH

£1,650 PCM

HASLAM'S
Lettings



A well presented two bedroom top floor apartment located within an impressive development in the town centre within walking distance of Reading mainline station.

Reading Borough Council Tax Band D.

Water supply: Mains

Drainage info: Mains

Electricity supply: Mains

Broadband/Mobile Info: Connections available. For an indication of specific speeds and supply of Broadband and Mobile, we advise applicants go to the Ofcom website 'Broadband and Mobile Coverage Checker'.

Available 25/10/2024

*Fees For Assured Shorthold Tenancies: when you rent a property from us you will be required to pay a sum equivalent to one weeks' rent for a holding deposit. Upon successful application, this amount will be off set against your first months' rent. You will also be required to pay a security deposit equivalent to 5 weeks' rent which will be held and protected in line with Deposit legislation. For more information about our fees please visit: www.haslams.net
Fees for all other tenancies (Non Housing Act Tenancies / Company Lets): when you rent a property from us we will charge you a one-off fee per property. This charge is the equivalent of 15 days of the monthly rental charge (+VAT) with a minimum fee of £450 (inc.VAT) up to a maximum of £650 (inc.VAT). Other fees may apply depending on your circumstances.

- Open plan living room/kitchen with wood flooring; Total floor area 70m2 - floorplan to follow
- Fully fitted kitchen with integrated appliances; Additional sundry of £70 to cover hot water and heating
- Two double bedrooms; master with built in wardrobe
- En-suite shower room to master; main family bathroom
- Secure allocated parking; private roof terrace; EPC Rating B
- Furnished; Communal boiler; Managed by LANDLORD

0118 960 1055

lettings@haslams.net www.haslams.net

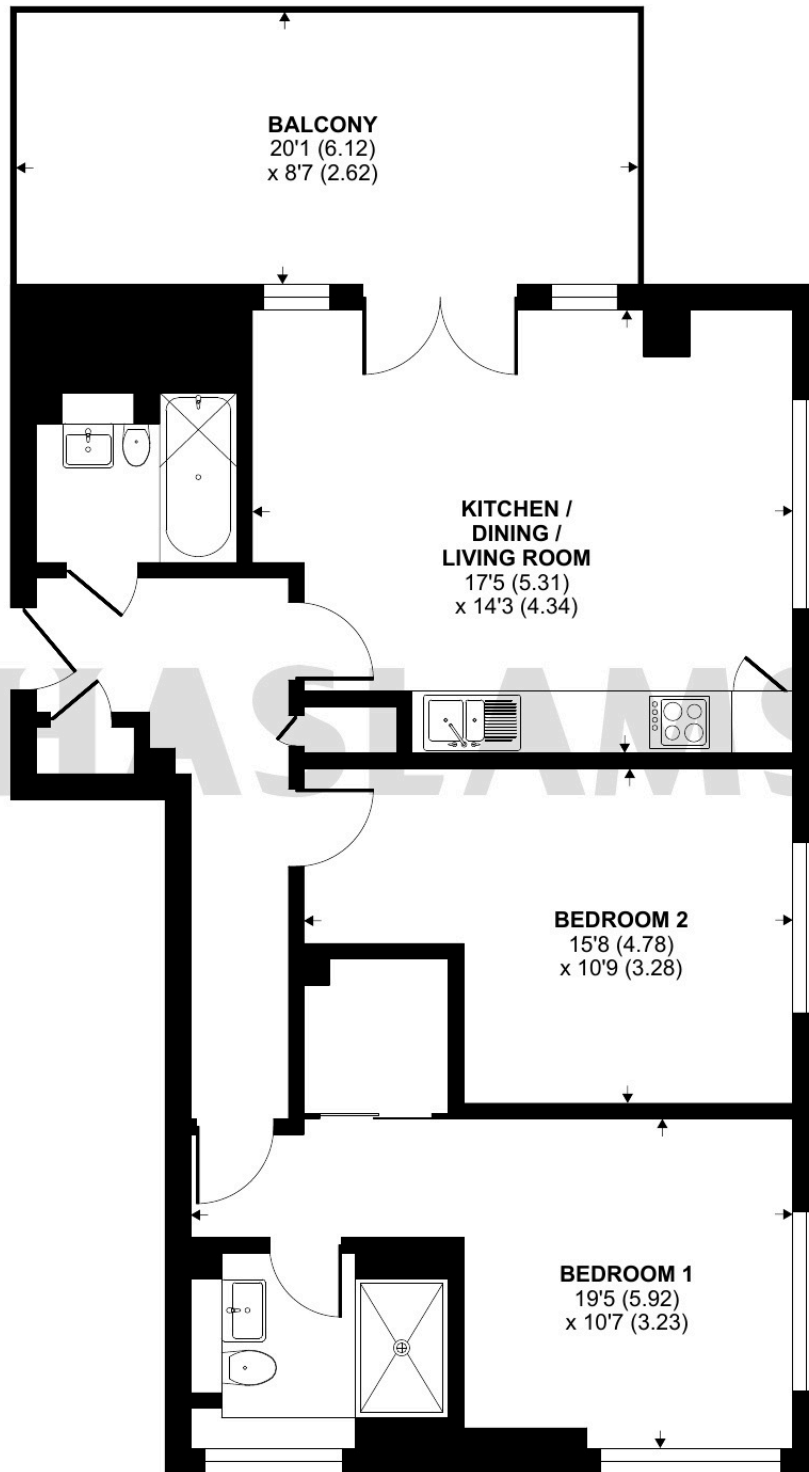
Haslams Estate Agents Ltd, 159 Friar Street, Reading, Berkshire, RG1 1HE



Alfred Street, Reading, RG1

Approximate Area = 768 sq ft / 71.3 sq m

For identification only - Not to scale



Floor plan produced in accordance with RICS Property Measurement Standards incorporating International Property Measurement Standards (IPMS2 Residential). © n1cheom 2024. Produced for Haslams. REF: 1190247