

Property ref: 39261

## Chatham Place, Reading, RG1 7AZ

£1,600 PCM

**HASLAM'S**  
Lettings



This two bedroom apartment has an open plan living room with balcony and an outlook over the residents' garden. Conveniently located for mainline station and with the benefit of undercroft parking. Reading Borough Council Tax Band D.

**Available 27/09/2024**

- Open plan living room with private balcony; Gas central heating
- Modern fitted kitchen with integrated appliances; Utility cupboard
- Master bedroom with en-suite shower room; further double bedroom
- Modern three-piece bathroom suite with shower; EPC Rating B
- Undercroft parking; Residents' courtyard; Concierge service
- Furnished; Managed by HASLAM'S

\*Fees For Assured Shorthold Tenancies: when you rent a property from us you will be required to pay a sum equivalent to one weeks' rent for a holding deposit. Upon successful application, this amount will be off set against your first months' rent. You will also be required to pay a security deposit equivalent to 5 weeks' rent which will be held and protected in line with Deposit legislation. For more information about our fees please visit: [www.haslams.net](http://www.haslams.net)  
Fees for all other tenancies (Non Housing Act Tenancies / Company Lets): when you rent a property from us we will charge you a one-off fee per property. This charge is the equivalent of 15 days of the monthly rental charge (+VAT) with a minimum fee of £450 (inc.VAT) up to a maximum of £650 (inc.VAT). Other fees may apply depending on your circumstances.

**0118 960 1055**

**[lettings@haslams.net](mailto:lettings@haslams.net) [www.haslams.net](http://www.haslams.net)**

**Haslams Estate Agents Ltd, 159 Friar Street, Reading, Berkshire, RG1 1HE**

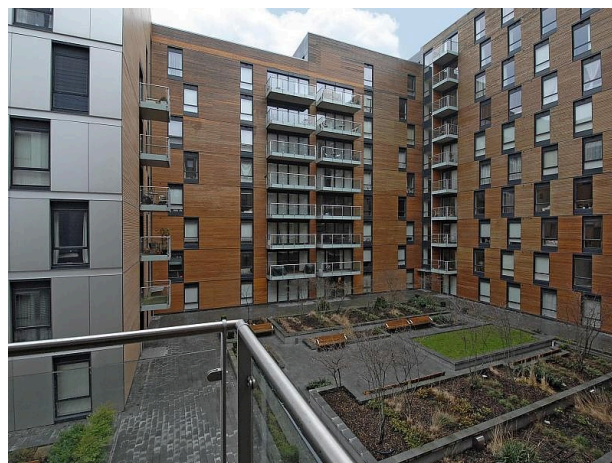
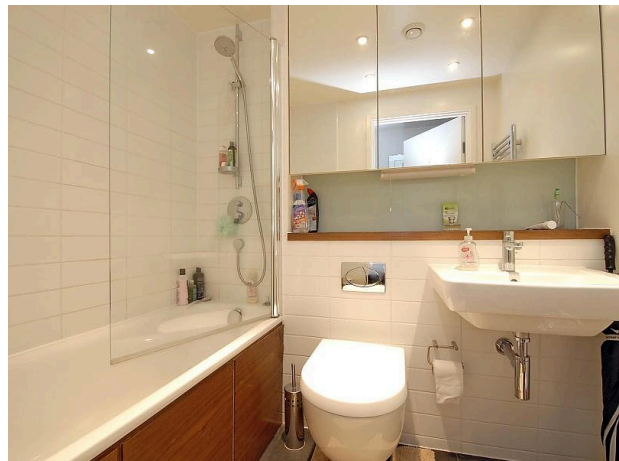
Water supply: Mains

Drainage info: Mains

Electricity supply: Mains

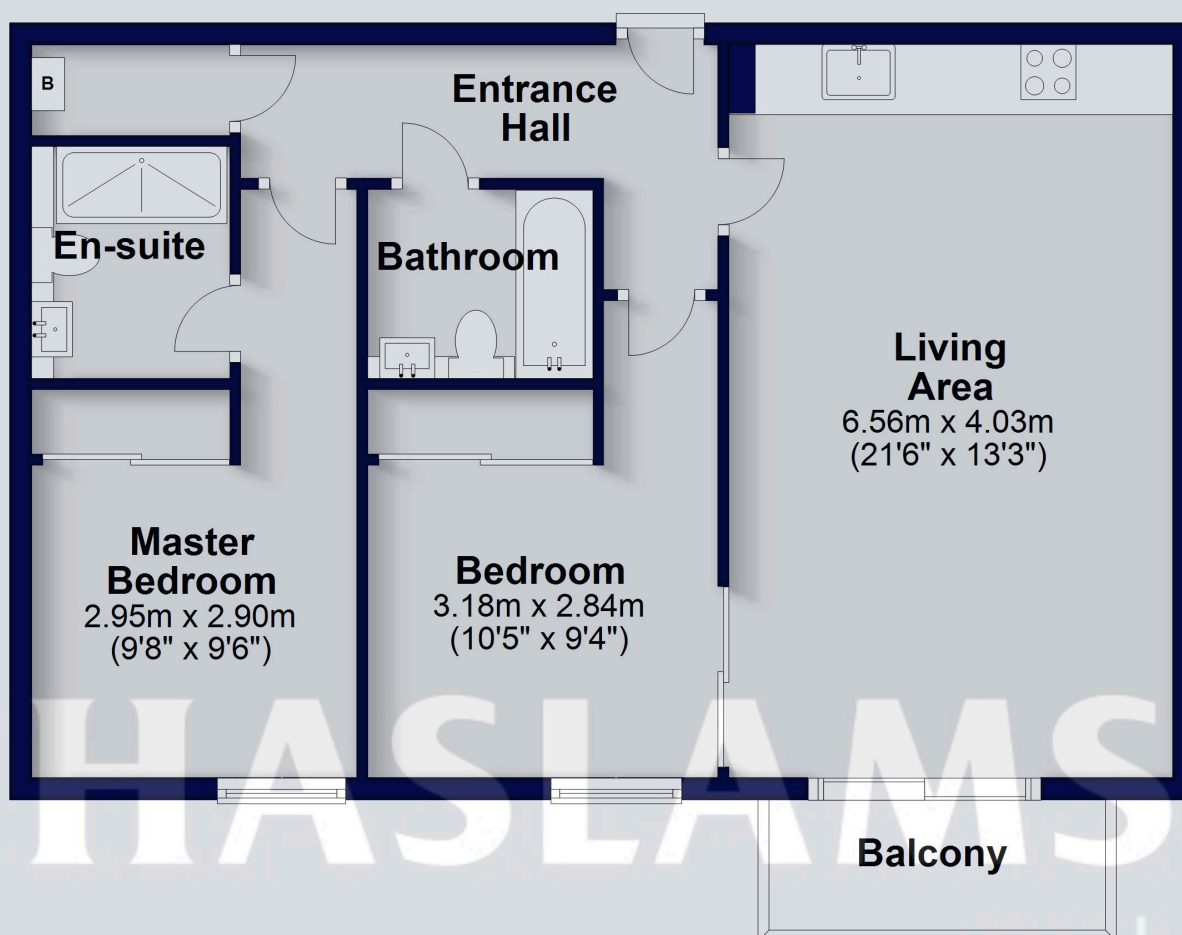
Gas supply: Mains

Broadband/Mobile Info: Connections available. For an indication of specific speeds and supply of Broadband and Mobile, we advise applicants go to the Ofcom website 'Broadband and Mobile Coverage Checker'.



## Third Floor

Approx. 69.0 sq. metres (742.7 sq. feet)



Total area: approx. 69.0 sq. metres (742.7 sq. feet)

This floorplan is for illustrative purposes only and is not to scale. The total area includes all the areas shown.  
Plan produced using PlanUp.