

Property ref: 142277

23 Joseph Huntley Walk, Reading, RG1 3NP

£2,050 PCM

HASLAM'S
Lettings



A modern, two double bedroom second floor apartment located in Reading town centre, built by Berkeley Homes. Reading Borough Council tax band D.

Available 29/09/2024

- Two double bedrooms; Master with en suite
- Family bathroom with shower over the bath
- Fully fitted kitchen with appliances
- Private balcony, No Parking
- EPC rating B; Furnished
- No parking; Managed by LANDLORD

*Fees For Assured Shorthold Tenancies: when you rent a property from us you will be required to pay a sum equivalent to one weeks' rent for a holding deposit. Upon successful application, this amount will be off set against your first months' rent. You will also be required to pay a security deposit equivalent to 5 weeks' rent which will be held and protected in line with Deposit legislation. For more information about our fees please visit: www.haslams.net
Fees for all other tenancies (Non Housing Act Tenancies / Company Lets): when you rent a property from us we will charge you a one-off fee per property. This charge is the equivalent of 15 days of the monthly rental charge (+VAT) with a minimum fee of £450 (inc.VAT) up to a maximum of £650 (inc.VAT). Other fees may apply depending on your circumstances.

0118 960 1055

lettings@haslams.net www.haslams.net

Haslams Estate Agents Ltd, 159 Friar Street, Reading, Berkshire, RG1 1HE

Heating Type (Gas, Elec, communal boiler etc.): Communal

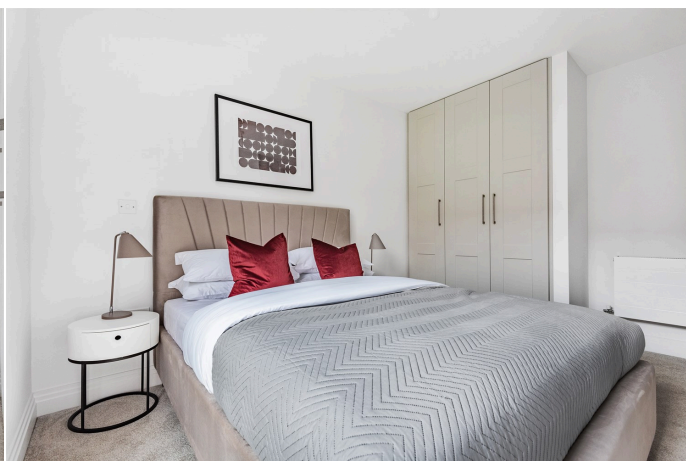
Water supply: Mains

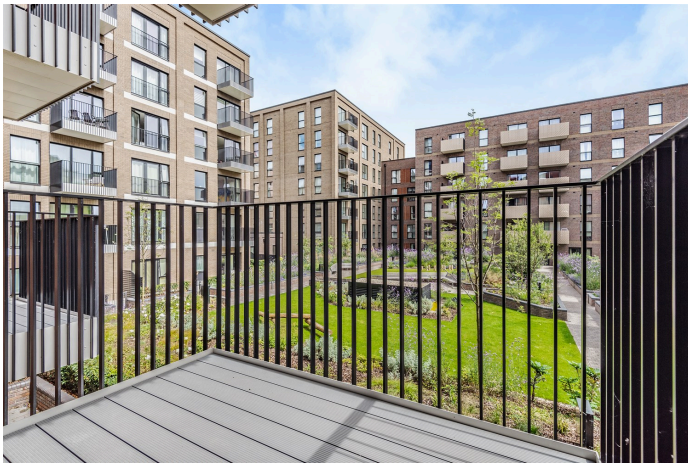
Drainage info: Mains

Electricity supply: Mains

Gas supply: NA

Broadband/Mobile Info: Connections available. For an indication of specific speeds and supply of Broadband and Mobile, we advise applicants go to the Ofcom website 'Broadband and Mobile Coverage Checker'.

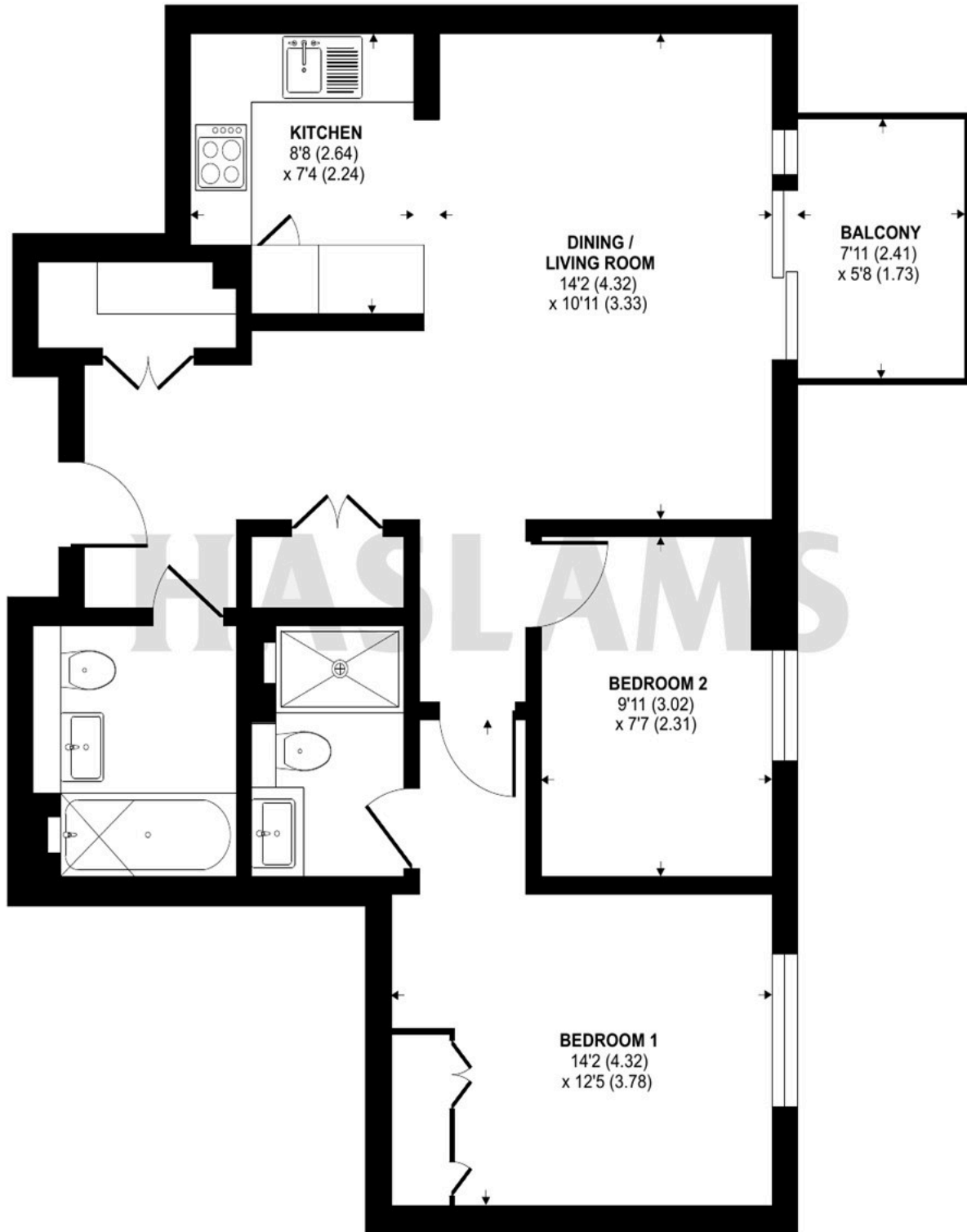




Joseph Huntley Walk, Reading, RG1

Approximate Area = 668 sq ft / 62 sq m

For identification only - Not to scale



THIRD FLOOR



Floor plan produced in accordance with RICS Property Measurement Standards incorporating International Property Measurement Standards (IPMS2 Residential). © ntxcom 2022. Produced for Haslams. REF: 869706