

Property ref: 147136

The Chambers, Reading, RG1 4FF

£950 PCM

HASLAM'S
Lettings



A centrally located studio apartment ideally positioned within walking distance of the Oracle development and the mainline station. Located on the first floor with south and westerly views this well-planned home has been finished to a high standard with a well-equipped kitchen area, shower room and an entry phone system. Reading Borough Council Tax Band B.

Available 12/10/2024

- Studio apartment; No pets
- First floor position; Furnished
- EPC Rating D; Electric heating
- Allocated parking; Total floor area 24m2 - floorplan to follow
- Managed by HASLAM'S

*Fees For Assured Shorthold Tenancies: when you rent a property from us you will be required to pay a sum equivalent to one weeks' rent for a holding deposit. Upon successful application, this amount will be off set against your first months' rent. You will also be required to pay a security deposit equivalent to 5 weeks' rent which will be held and protected in line with Deposit legislation. For more information about our fees please visit: www.haslams.net
Fees for all other tenancies (Non Housing Act Tenancies / Company Lets): when you rent a property from us we will charge you a one-off fee per property. This charge is the equivalent of 15 days of the monthly rental charge (+VAT) with a minimum fee of £450 (inc.VAT) up to a maximum of £650 (inc.VAT). Other fees may apply depending on your circumstances.

0118 960 1055

lettings@haslams.net www.haslams.net

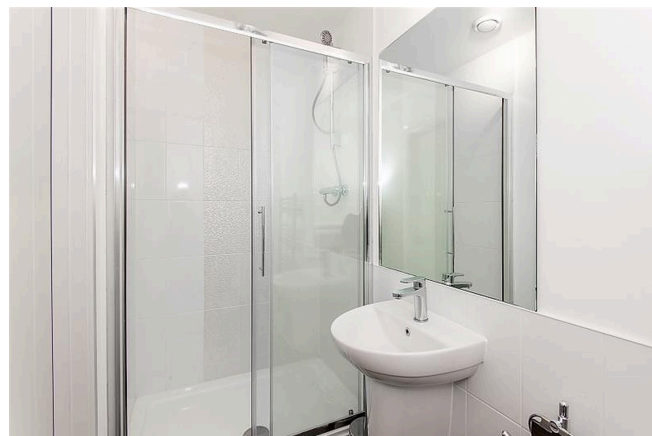
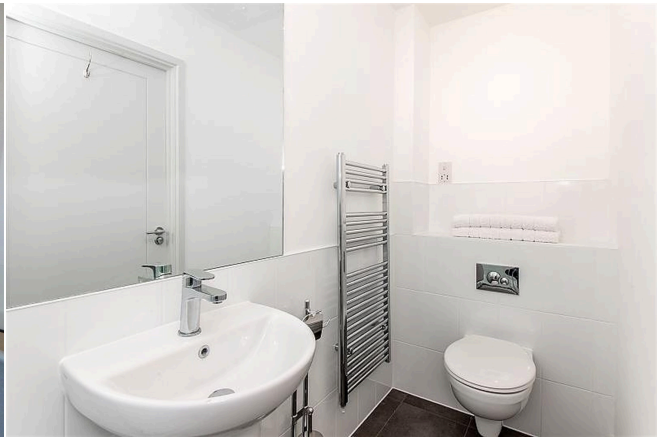
Haslams Estate Agents Ltd, 159 Friar Street, Reading, Berkshire, RG1 1HE

Water supply: Mains

Drainage info: Mains

Electricity supply: Mains

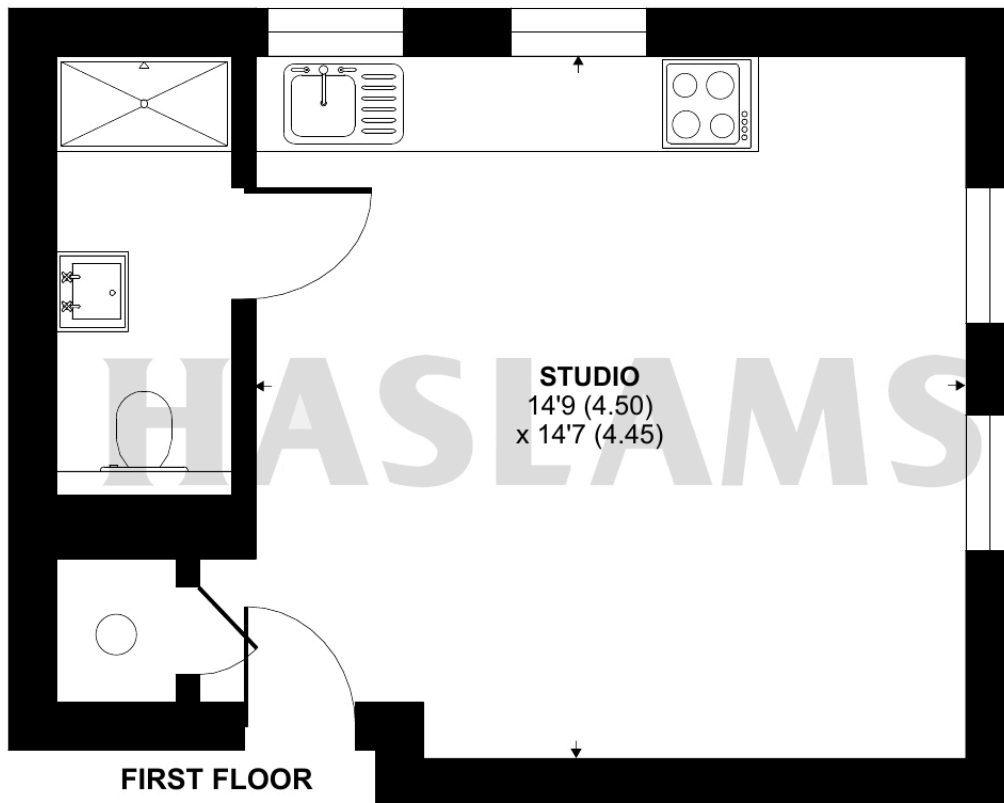
Broadband/Mobile Info: Connections available. For an indication of specific speeds and supply of Broadband and Mobile, we advise applicants go to the Ofcom website 'Broadband and Mobile Coverage Checker'.



East Street, Reading, RG1

Approximate Area = 269 sq ft / 25 sq m

For identification only - Not to scale



Floor plan produced in accordance with RICS Property Measurement Standards incorporating International Property Measurement Standards (IPMS2 Residential). © n1cheom 2024. Produced for Haslams. REF: 11777412