

Property ref: 99377

Longwater Avenue, Reading, RG2 6AB

£2,250 PCM

HASLAM'S
Lettings



A stunning & modern, four bedroom end of terrace town house available in the sought-after Green Park Village Development. This property is surrounded by lakeside walks, local amenities and shops. The location provides excellent transport links with easy access to the M4 motorway and Reading town centre.

Reading Borough Council Tax Band E.

Available 08/10/2024

- Four bedrooms; Three doubles and one single
- Modern fully fitted designer kitchen
- Modern family bathroom plus en-suite to master bedroom
- Two allocated parking spaces; Pets considered - please contact the office to discuss
- Good-sized garden; EPC rating B; Gas central heating
- Unfurnished; Managed by HASLAM'S

*Fees For Assured Shorthold Tenancies: when you rent a property from us you will be required to pay a sum equivalent to one weeks' rent for a holding deposit. Upon successful application, this amount will be off set against your first months' rent. You will also be required to pay a security deposit equivalent to 5 weeks' rent which will be held and protected in line with Deposit legislation. For more information about our fees please visit: www.haslams.net
Fees for all other tenancies (Non Housing Act Tenancies / Company Lets): when you rent a property from us we will charge you a one-off fee per property. This charge is the equivalent of 15 days of the monthly rental charge (+VAT) with a minimum fee of £450 (inc.VAT) up to a maximum of £650 (inc.VAT). Other fees may apply depending on your circumstances.

0118 960 1055

lettings@haslams.net www.haslams.net

Haslams Estate Agents Ltd, 159 Friar Street, Reading, Berkshire, RG1 1HE

Water supply: Mains
Drainage info: Mains
Electricity supply: Mains
Gas supply: Mains
Broadband/Mobile Info: Connections available. For an indication of specific speeds and supply of Broadband and Mobile, we advise applicants go to the Ofcom website 'Broadband and Mobile Coverage Checker'.

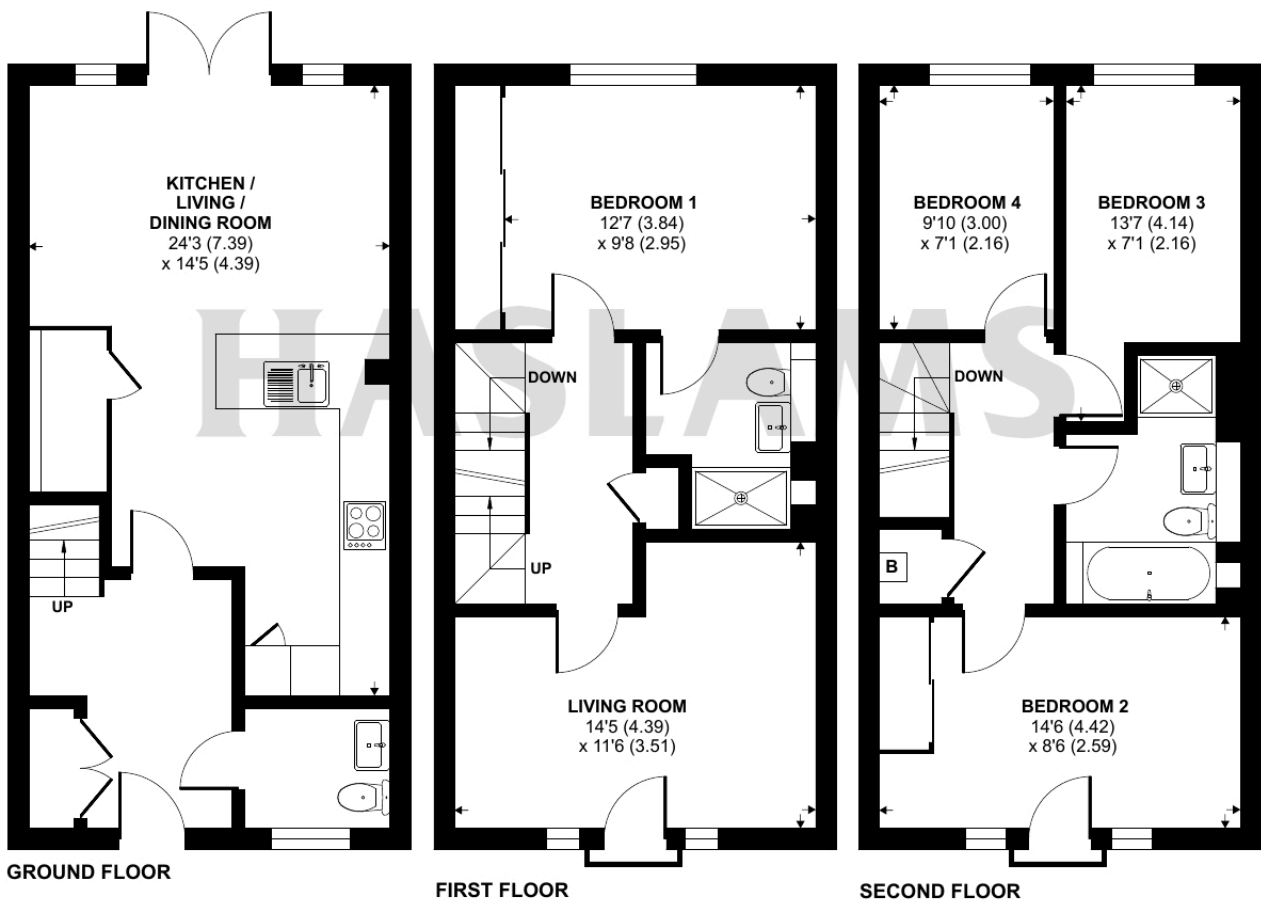




Longwater Avenue, Reading, RG2

Approximate Area = 1299 sq ft / 120.6 sq m

For identification only - Not to scale



Floor plan produced in accordance with RICS Property Measurement Standards incorporating International Property Measurement Standards (IPMS2 Residential). © n1cheom 2024. Produced for Haslam's. REF: 1173336