

Property ref: 80120

Hewitt, Reading, RG1 7LY

£1,450 PCM

HASLAM'S
Lettings



A modern, one bedroom, seventeenth floor apartment within this impressive development in Reading town centre. In close proximity to The Oracle shopping centre and mainline railway station. Reading Borough Council Tax Band C.

Available 18/09/2024

- Modern one bedroom apartment; £70 per month sundry on top of rent to cover hot water and heating via communal boiler
- Open plan living room/kitchen with wood flooring
- Fully fitted kitchen with integrated appliances
- Main family-sized bathroom; EPC rating: B
- Close proximity to Reading mainline station
- Furnished; No parking; Managed by HASLAM'S

*Fees For Assured Shorthold Tenancies: when you rent a property from us you will be required to pay a sum equivalent to one weeks' rent for a holding deposit. Upon successful application, this amount will be off set against your first months' rent. You will also be required to pay a security deposit equivalent to 5 weeks' rent which will be held and protected in line with Deposit legislation. For more information about our fees please visit: www.haslams.net
Fees for all other tenancies (Non Housing Act Tenancies / Company Lets): when you rent a property from us we will charge you a one-off fee per property. This charge is the equivalent of 15 days of the monthly rental charge (+VAT) with a minimum fee of £450 (inc.VAT) up to a maximum of £650 (inc.VAT). Other fees may apply depending on your circumstances.

0118 960 1055

lettings@haslams.net www.haslams.net

Haslams Estate Agents Ltd, 159 Friar Street, Reading, Berkshire, RG1 1HE

Water supply: Mains

Drainage info: Mains

Electricity supply: Mains

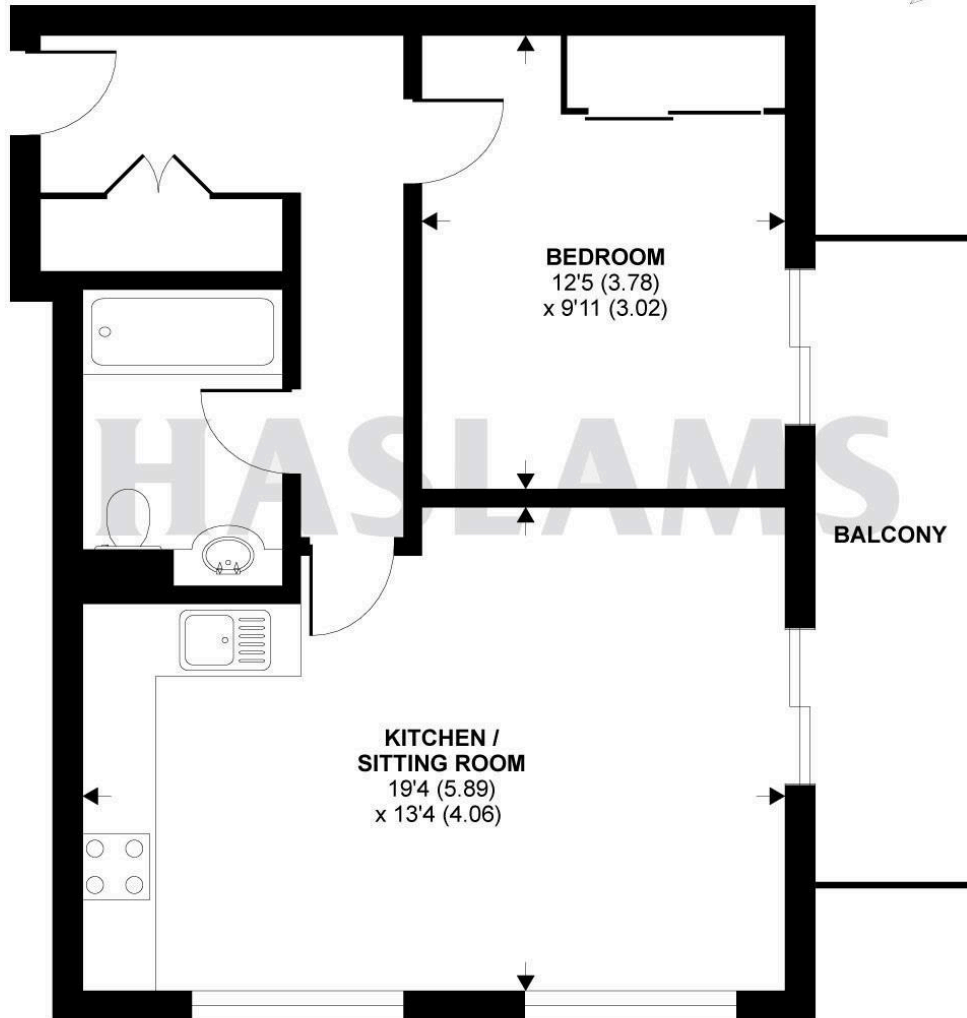
Gas supply: Communal

Broadband/Mobile Info: Connections available. For an indication of specific speeds and supply of Broadband and Mobile, we advise applicants go to the Ofcom website 'Broadband and Mobile Coverage Checker',



Alfred Street, Reading, RG1

APPROX. GROSS INTERNAL FLOOR AREA 516 SQ FT 47.9 SQ METRES



Whilst every attempt has been made to ensure the accuracy of the floor plan contained here, measurements of doors, windows and rooms are approximate and no responsibility is taken for any error, omission or misstatement. These plans are for representation purposes only as defined by RICS Code of Measuring Practice and should be used as such by any prospective purchaser. Specifically no guarantee is given on the total square footage of the property if quoted on this plan. Any figure given is for initial guidance only and should not be relied on as a basis of valuation.

Copyright nichecom.co.uk 2017 Produced for Haslams REF : 225522