

Property ref: 139895

Norton Road, Reading, RG1 3QJ

£1,400 PCM

HASLAM'S
Lettings



A mid-terraced, two double bedroom home to rent located in East Reading. The property is conveniently located for Reading town centre, Royal Berkshire Hospital and Junction 10 of the M4 motorway. Reading Borough Council-Tax band B.

Available 13/09/2024

- Two double bedrooms
- Unfurnished
- Private enclosed garden
- On street permit parking
- Easy access to A329 and M4
- EPC rating C; Managed by HASLAM'S

*Fees For Assured Shorthold Tenancies: when you rent a property from us you will be required to pay a sum equivalent to one weeks' rent for a holding deposit. Upon successful application, this amount will be off set against your first months' rent. You will also be required to pay a security deposit equivalent to 5 weeks' rent which will be held and protected in line with Deposit legislation. For more information about our fees please visit: www.haslams.net
Fees for all other tenancies (Non Housing Act Tenancies / Company Lets): when you rent a property from us we will charge you a one-off fee per property. This charge is the equivalent of 15 days of the monthly rental charge (+VAT) with a minimum fee of £450 (inc.VAT) up to a maximum of £650 (inc.VAT). Other fees may apply depending on your circumstances.

0118 960 1055

lettings@haslams.net www.haslams.net

Haslams Estate Agents Ltd, Haslams Estate Agents 159 Friar Street, Reading, , RG1 1HE

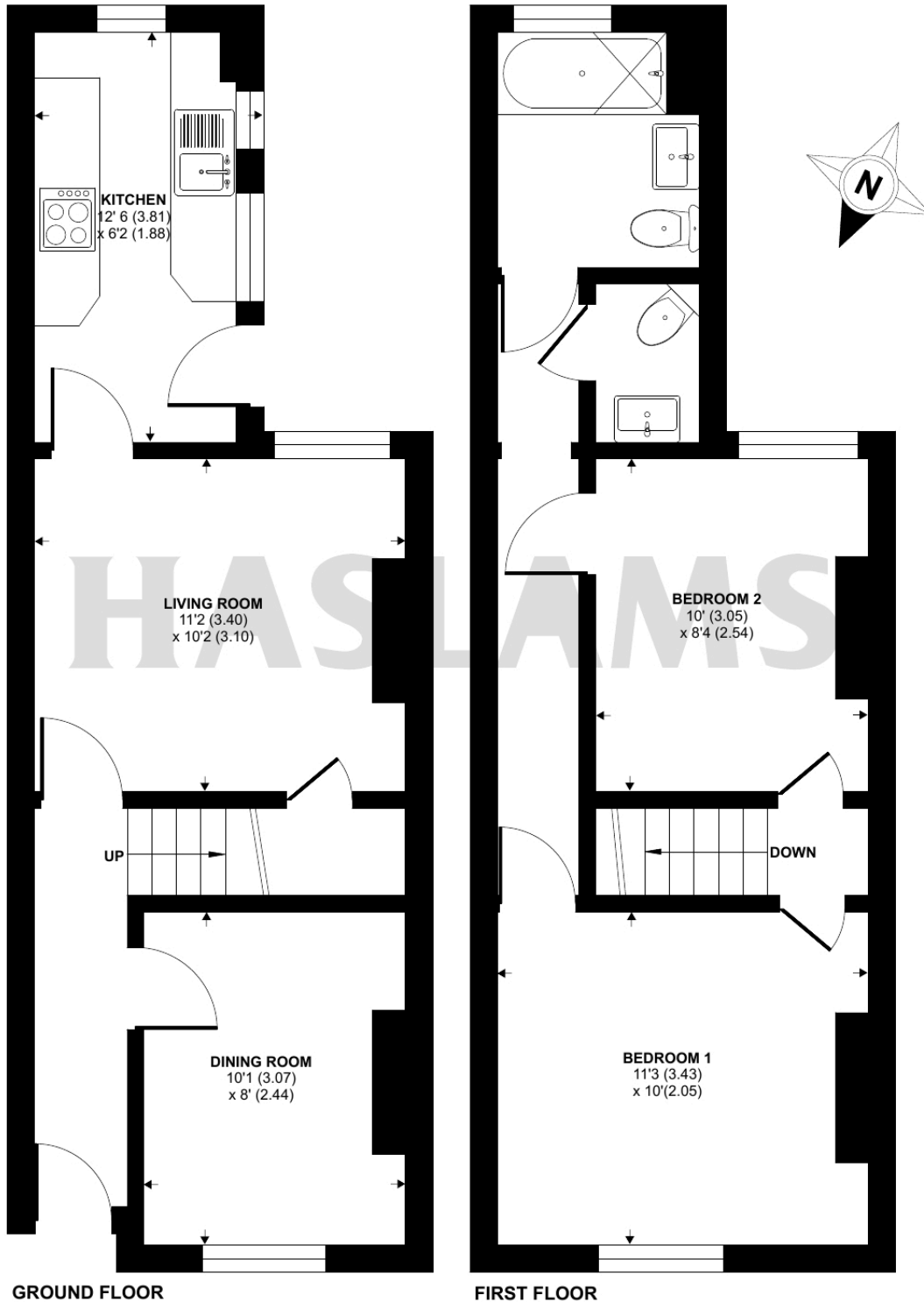
Type of Property: House
Number of Bedrooms: 2
Heating Type (Gas, Elec, communal boiler etc.): Gas
Water supply: Mains
Drainage info: Mains
Electricity supply: Mains
Gas supply: Mains



Norton Road, Reading, RG1

Approximate Area = 700 sq ft / 65 sq m

For identification only - Not to scale



Floor plan produced in accordance with RICS Property Measurement Standards incorporating International Property Measurement Standards (IPMS2 Residential). © n1cheom 2024. Produced for Haslamss. REF: 1162593