

Property ref: 151660

Colemansmoor Lane, Reading, RG5 4BT

£1,895 PCM

HASLAM'S
Lettings



A very well presented three bedroom detached bungalow located in a desirable road in Woodley.
Wokingham Borough Council Tax Band E.
Water supply: Mains
Drainage info: Mains
Electricity supply: Mains
Gas supply: Mains
Broadband/Mobile Info: Connections available. For an indication of specific speeds and supply of Broadband and Mobile, we advise applicants go to the Ofcom website 'Broadband and Mobile Coverage Checker'.

Available 03/09/2024

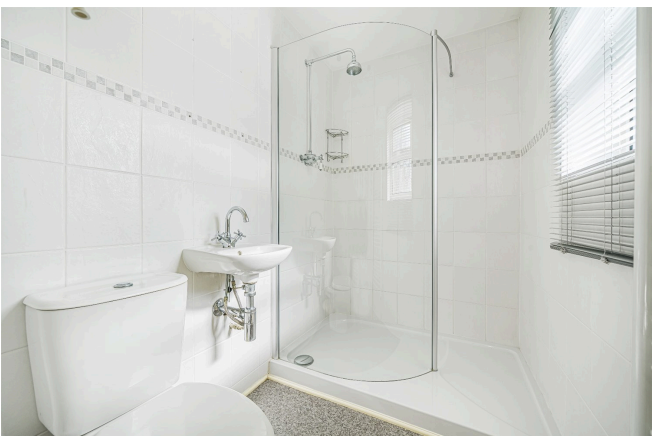
*Fees For Assured Shorthold Tenancies: when you rent a property from us you will be required to pay a sum equivalent to one weeks' rent for a holding deposit. Upon successful application, this amount will be off set against your first months' rent. You will also be required to pay a security deposit equivalent to 5 weeks' rent which will be held and protected in line with Deposit legislation. For more information about our fees please visit: www.haslams.net
Fees for all other tenancies (Non Housing Act Tenancies / Company Lets): when you rent a property from us we will charge you a one-off fee per property. This charge is the equivalent of 15 days of the monthly rental charge (+VAT) with a minimum fee of £450 (inc.VAT) up to a maximum of £650 (inc.VAT). Other fees may apply depending on your circumstances.

- Three double bedrooms, master with built in wardrobes
- Family bathroom plus a separate shower room
- Fully fitted kitchen with appliances
- Off road parking; Gas Central Heating
- Lovely private rear garden; EPC Rating D
- Unfurnished; Managed by HASLAM'S

0118 960 1055

lettings@haslams.net www.haslams.net

Haslams Estate Agents Ltd, 159 Friar Street, Reading, Berkshire, RG1 1HE

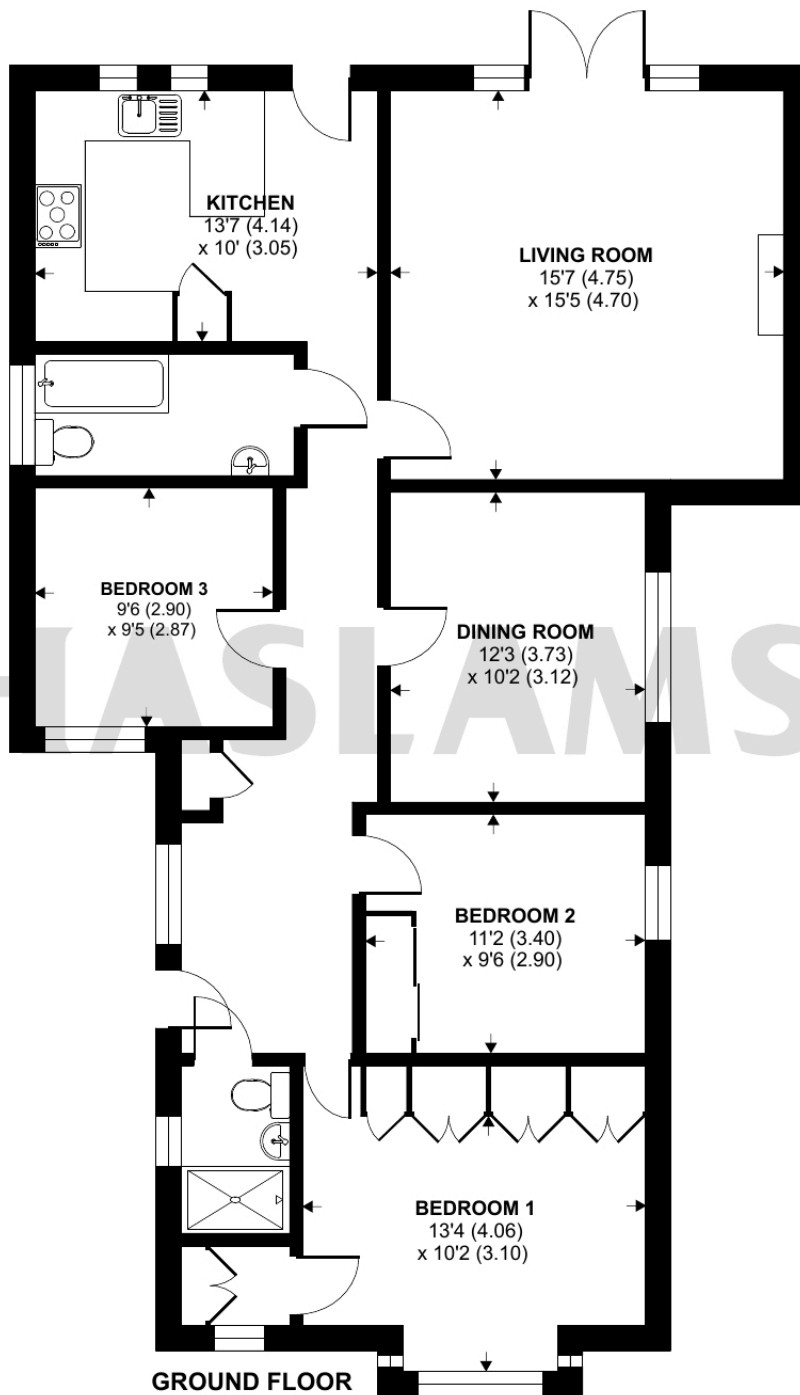




Colemans Moor Lane, Woodley, Reading, RG5

Approximate Area = 1153 sq ft / 107.1 sq m

For identification only - Not to scale



HASLAM'S



Floor plan produced in accordance with RICS Property Measurement Standards incorporating International Property Measurement Standards (IPMS2 Residential). © n1checom 2023. Produced for Haslam's. REF: 963528