

Property ref: 144300

Stable Close, Reading, RG7 3NJ

£1,395 PCM

HASLAM'S
Lettings



A well presented two bedroom terraced home, situated in the popular village of Burghfield Common. The property has benefited from a recent redecoration and modern kitchen. Outside there is a private garden predominantly laid to lawn with patio adjacent to the property.

West Berkshire Council tax band C.

Water supply: Mains

Drainage info: Mains

Electricity supply: Mains

Broadband/Mobile Info: Connections available. For an indication of specific speeds and supply of Broadband and Mobile, we advise applicants go to the Ofcom website 'Broadband and Mobile Coverage Checker'.

- Two double bedrooms
- Upstairs bathroom with shower over bath
- Electric heating
- Allocated parking and garage
- EPC rating E; No pets allowed
- Unfurnished; Managed by HASLAM'S

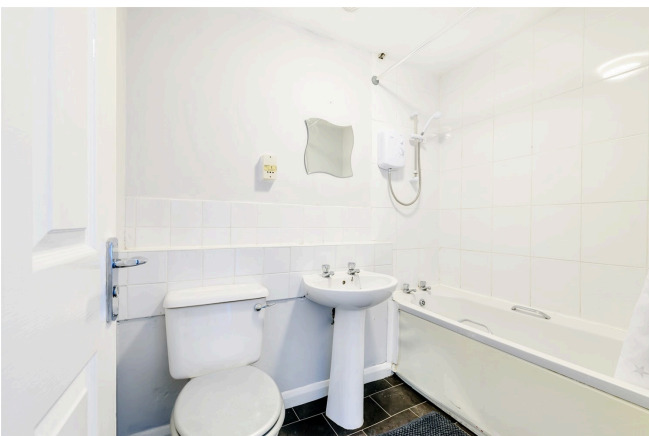
Available 25/07/2024

*Fees For Assured Shorthold Tenancies: when you rent a property from us you will be required to pay a sum equivalent to one weeks' rent for a holding deposit. Upon successful application, this amount will be off set against your first months' rent. You will also be required to pay a security deposit equivalent to 5 weeks' rent which will be held and protected in line with Deposit legislation. For more information about our fees please visit: www.haslams.net
Fees for all other tenancies (Non Housing Act Tenancies / Company Lets): when you rent a property from us we will charge you a one-off fee per property. This charge is the equivalent of 15 days of the monthly rental charge (+VAT) with a minimum fee of £450 (inc.VAT) up to a maximum of £650 (inc.VAT). Other fees may apply depending on your circumstances.

0118 960 1055

lettings@haslams.net www.haslams.net

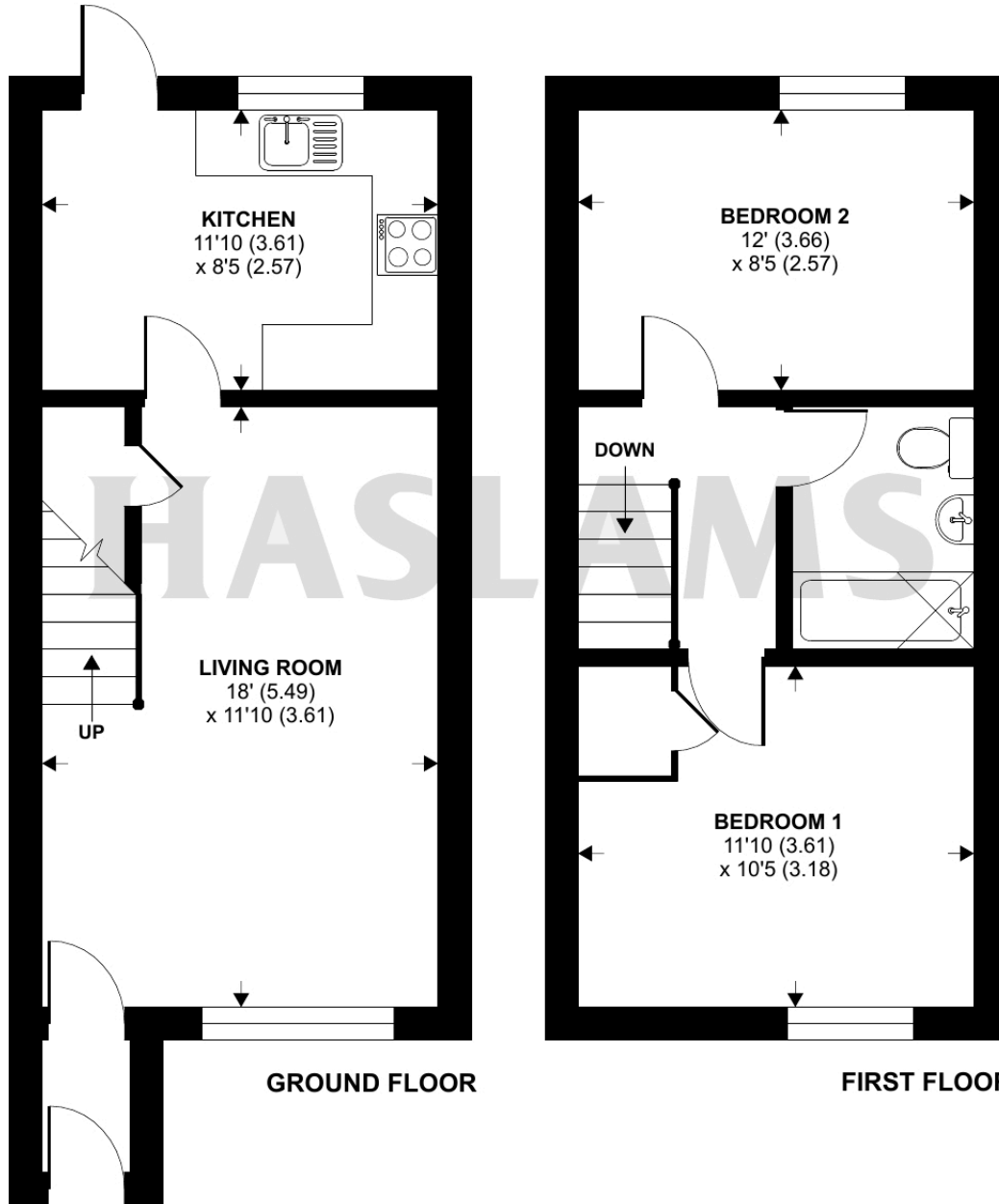
Haslams Estate Agents Ltd, 159 Friar Street, Reading, Berkshire, RG1 1HE



Stable Close, Burghfield Common, Reading, RG7

Approximate Area = 665 sq ft / 61.8 sq m

For identification only - Not to scale



GROUND FLOOR

FIRST FLOOR



Floor plan produced in accordance with RICS Property Measurement Standards incorporating International Property Measurement Standards (IPMS2 Residential). © n1checom 2022. Produced for Haslam's. REF: 859186